



KANSAS BOARD OF REGENTS

Foresight 2020

Kansas Adult Education Strategic Objectives



Kansas Adult Education

KANSAS BOARD OF REGENTS

**Who are we and what do we
do?**



Kansas Adult Education

KANSAS BOARD OF REGENTS

We serve individuals in “the gap”—those adults who have exited the K-12 system without the basic skills necessary to meet their full potential in postsecondary education and/or the workplace.

By helping to fill this “gap,” Kansas Adult Education serves as a major cog in the economic development engine of our state.



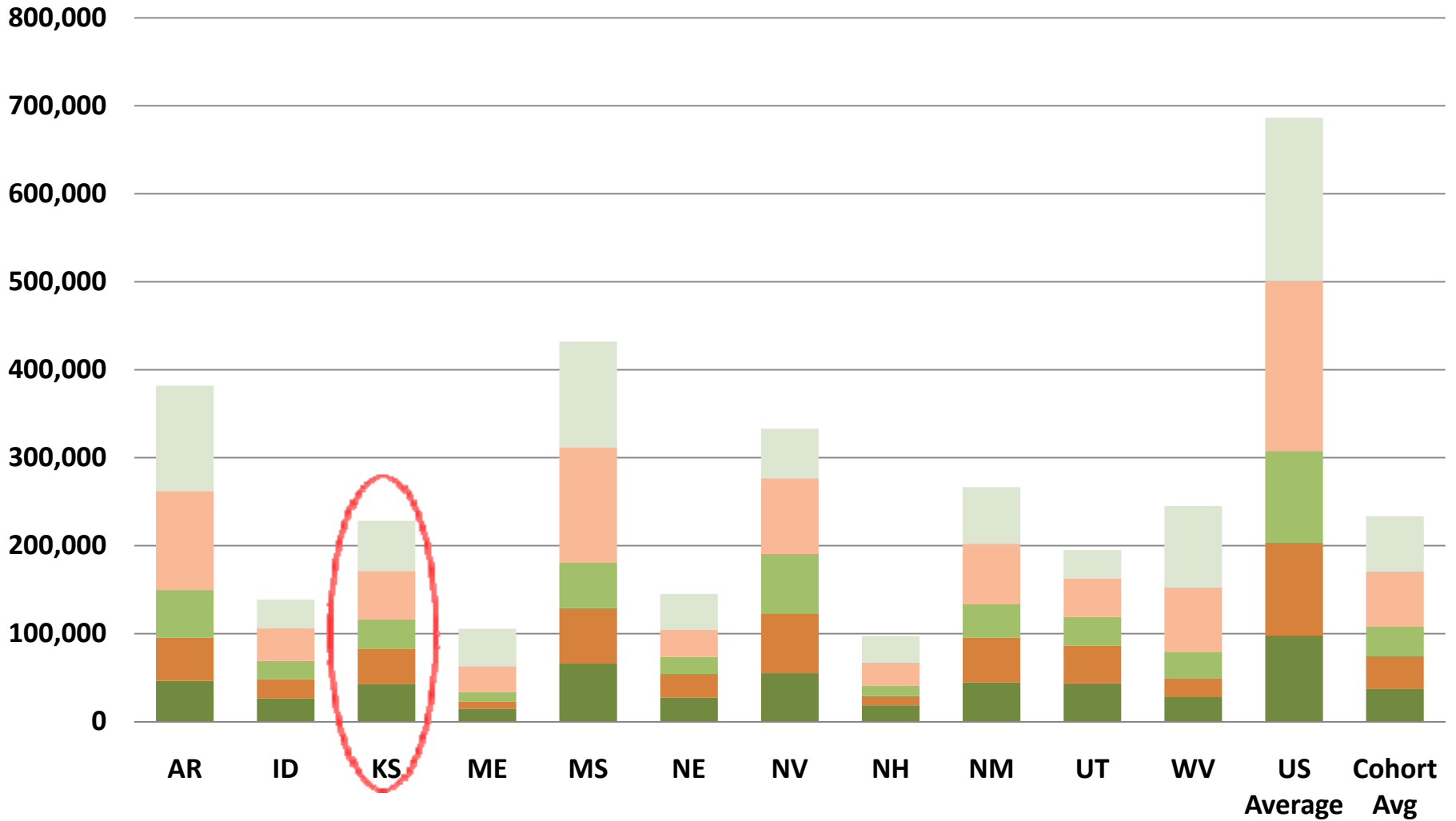
KANSAS BOARD OF REGENTS

Kansas Adult Education

How do we compare with our cohorts?

Cohort 4: 2009

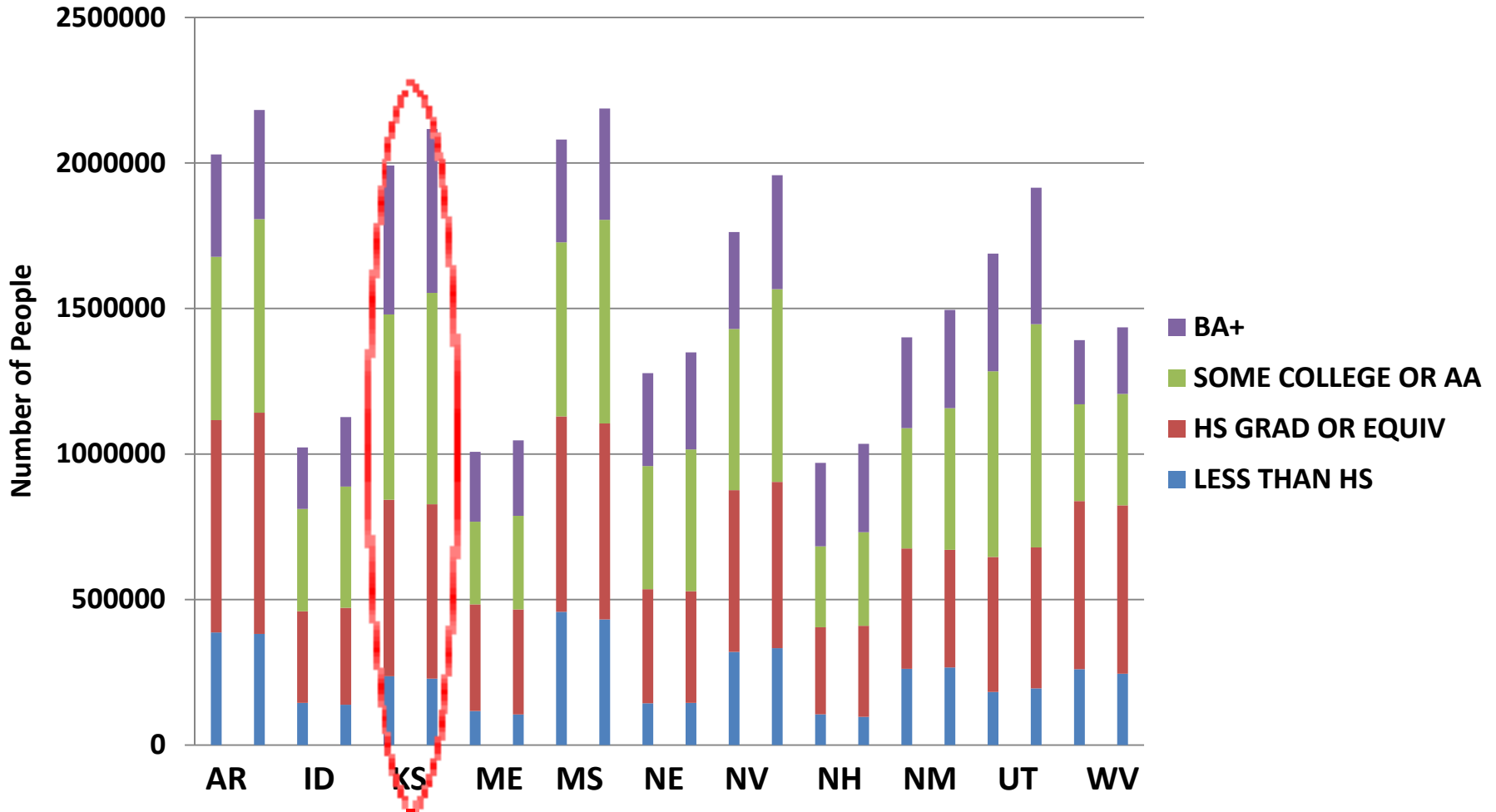
Less than H.S. Diploma Ed Attainment by All Age Categories



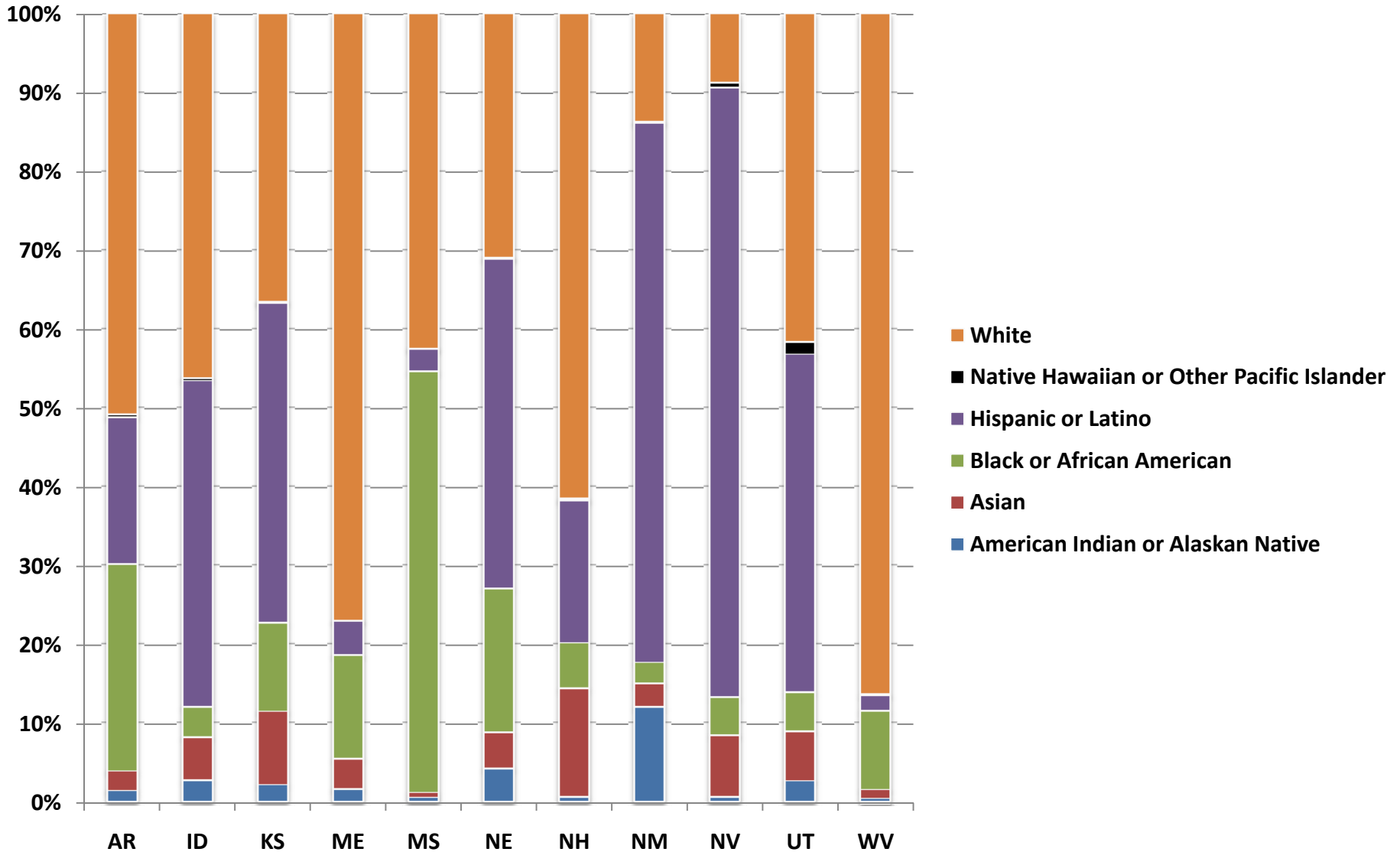
■ TOTAL 18-24 LESS THAN HS
 ■ TOTAL 25-34 LESS THAN HS
 ■ TOTAL 35-44 LESS THAN HS
■ TOTAL 45-64 LESS THAN HS
 ■ TOTAL 65+ LESS THAN HS

Cohort 4

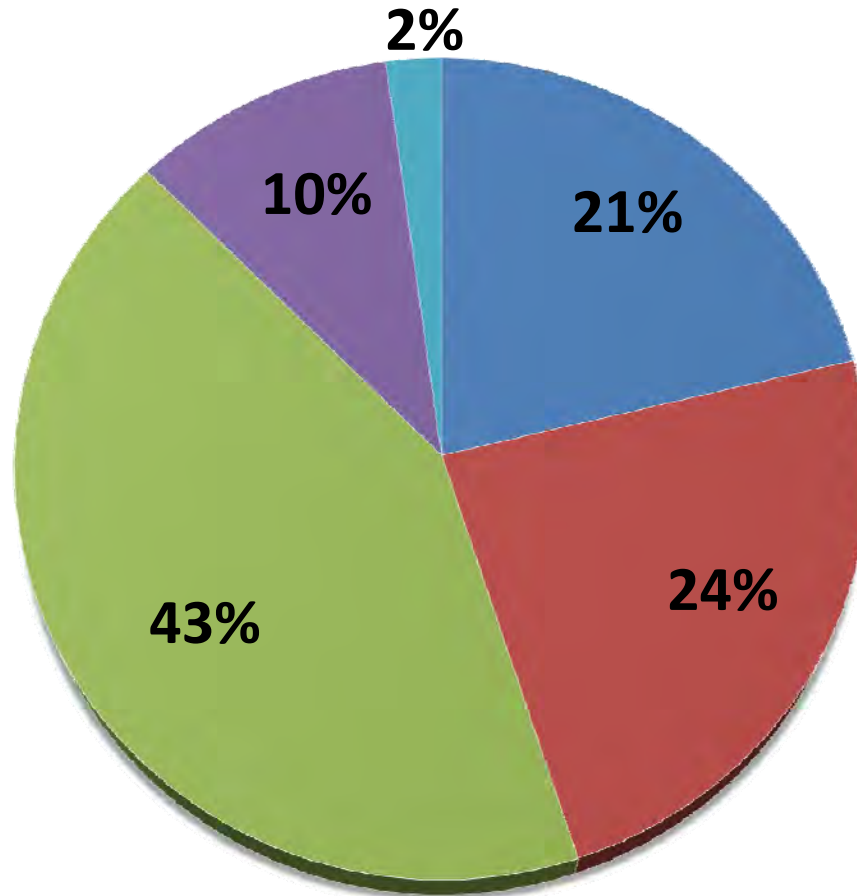
Ages 18-65+ Educational Attainment Levels By State 2005 Compared to 2009



Percent of Participants 2008-09 by Race/Ethnicity



Kansas FY2009 AE Participants by Age



■ 16-18

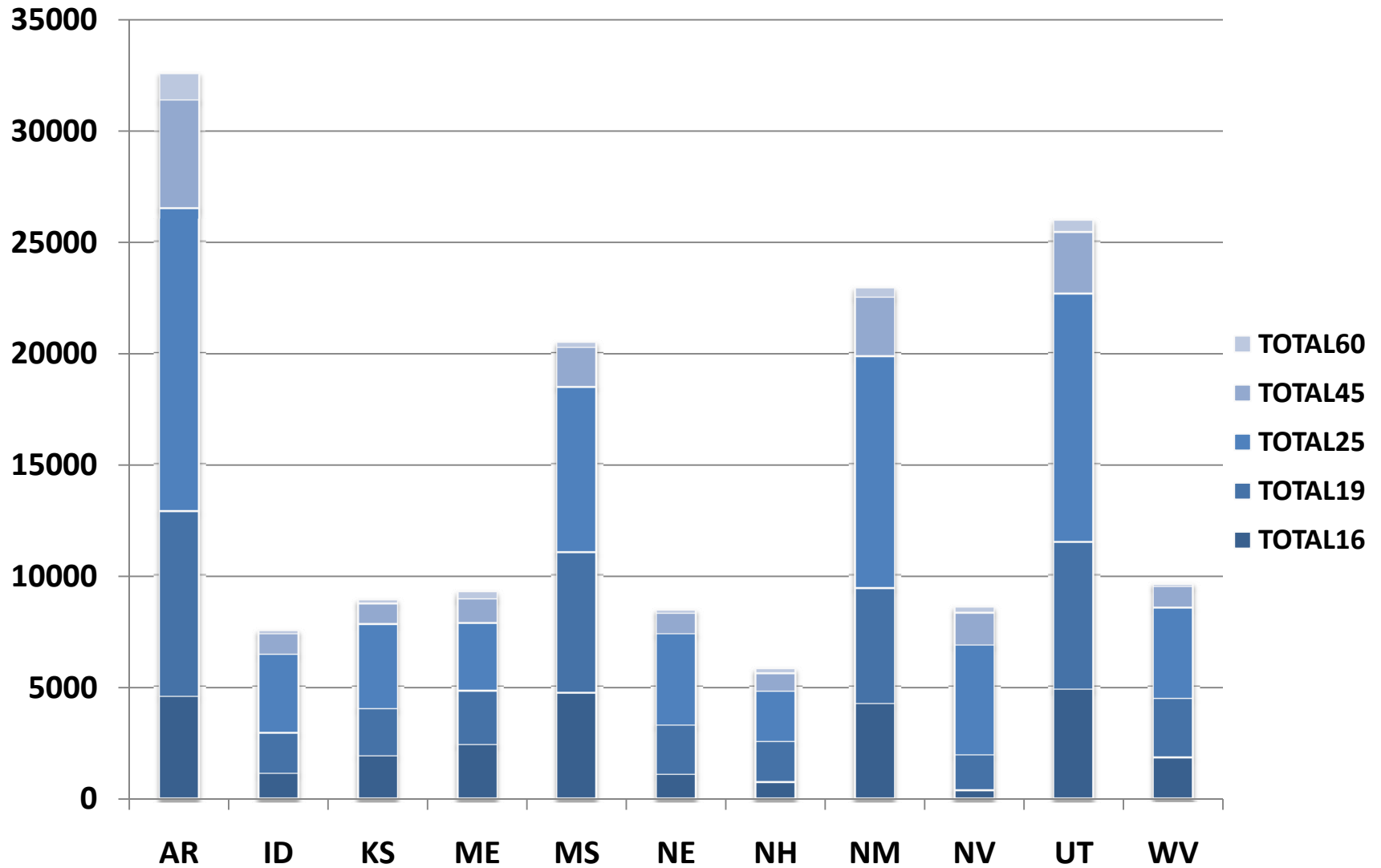
■ 19-24

■ 25-44

■ 45-59

■ 60+

Numbers of AE Students By Age PY 2008-09



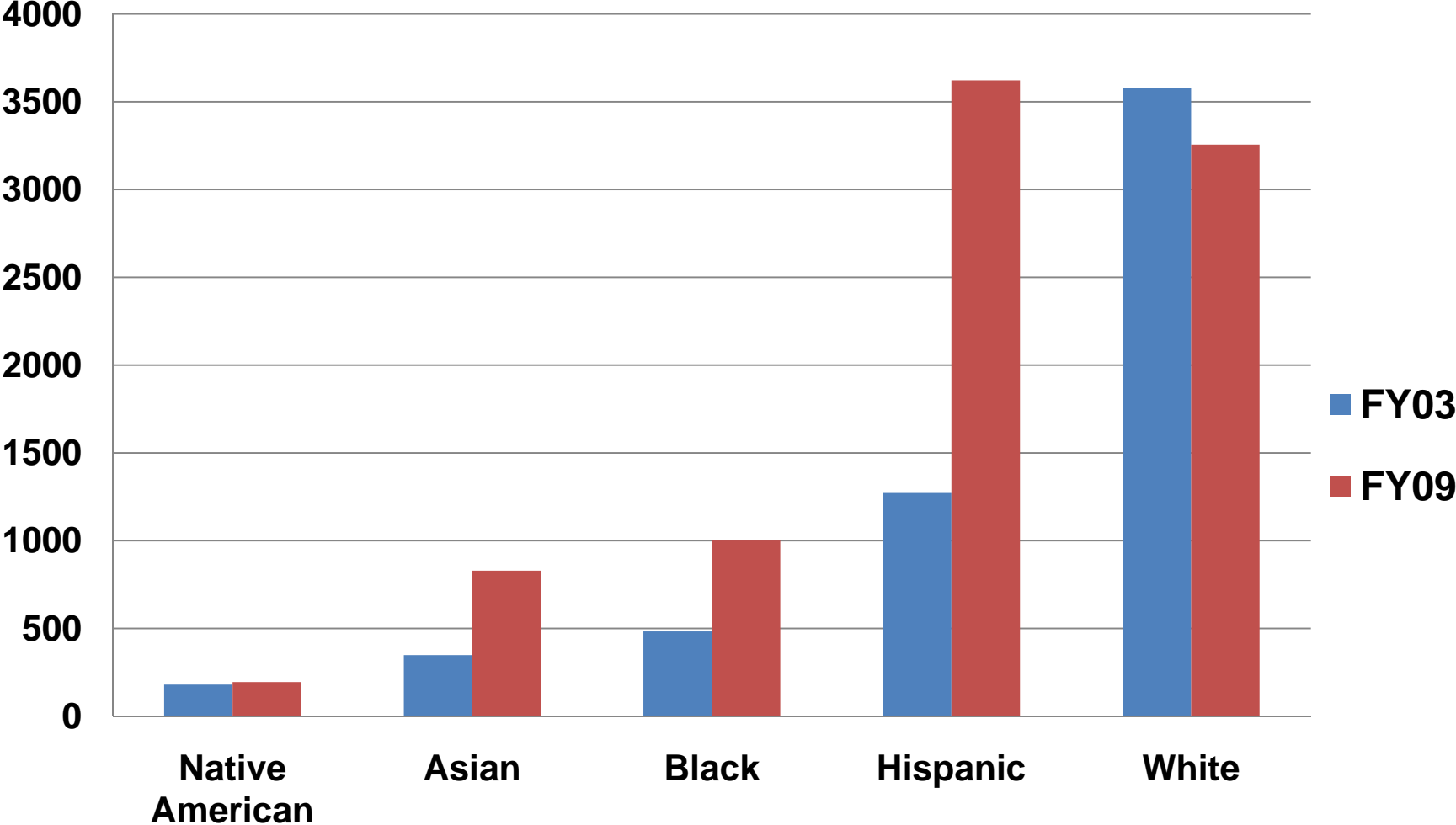


KANSAS BOARD OF REGENTS

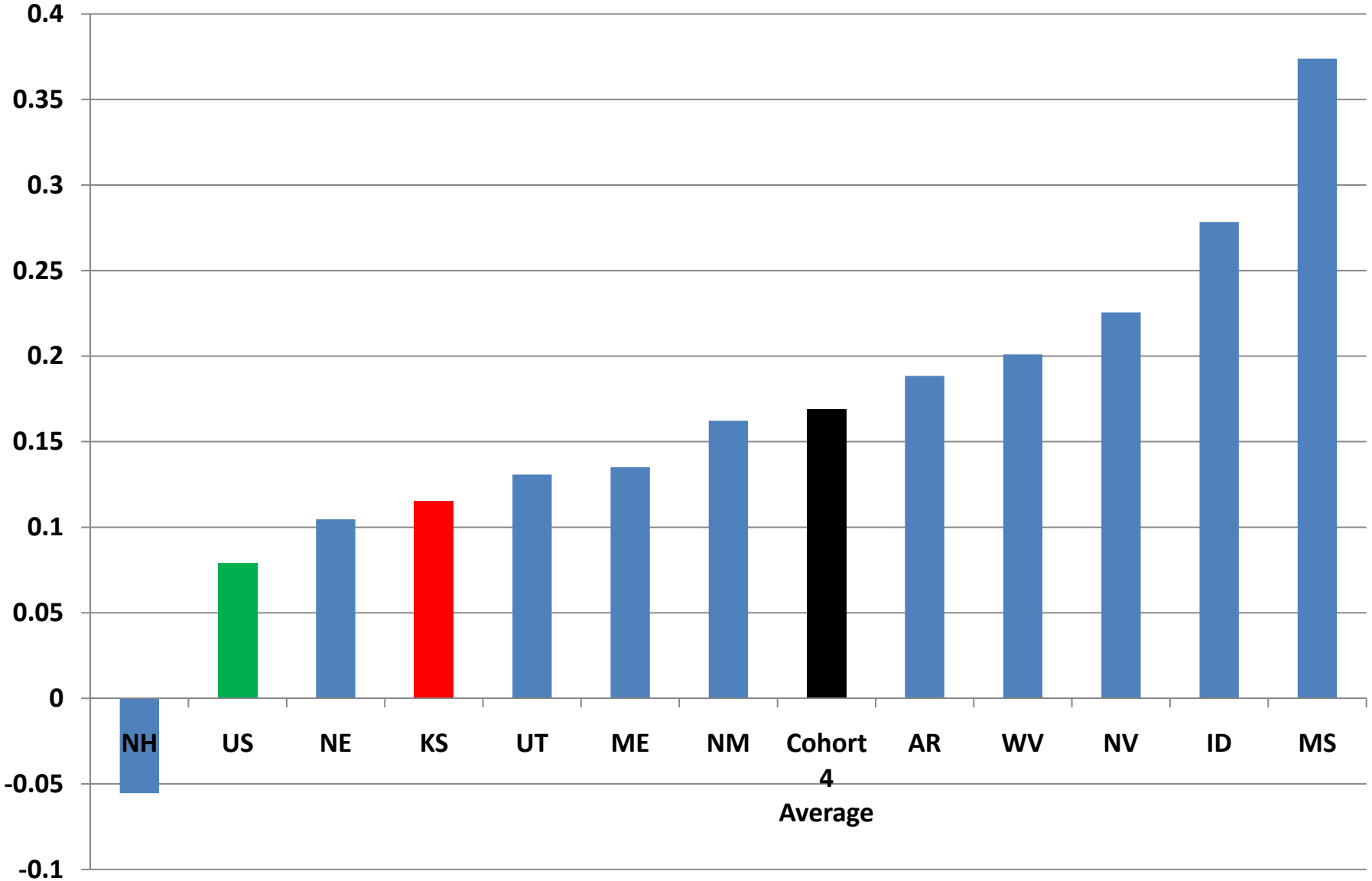
Kansas Adult Education

**How are the learners we serve
changing?**

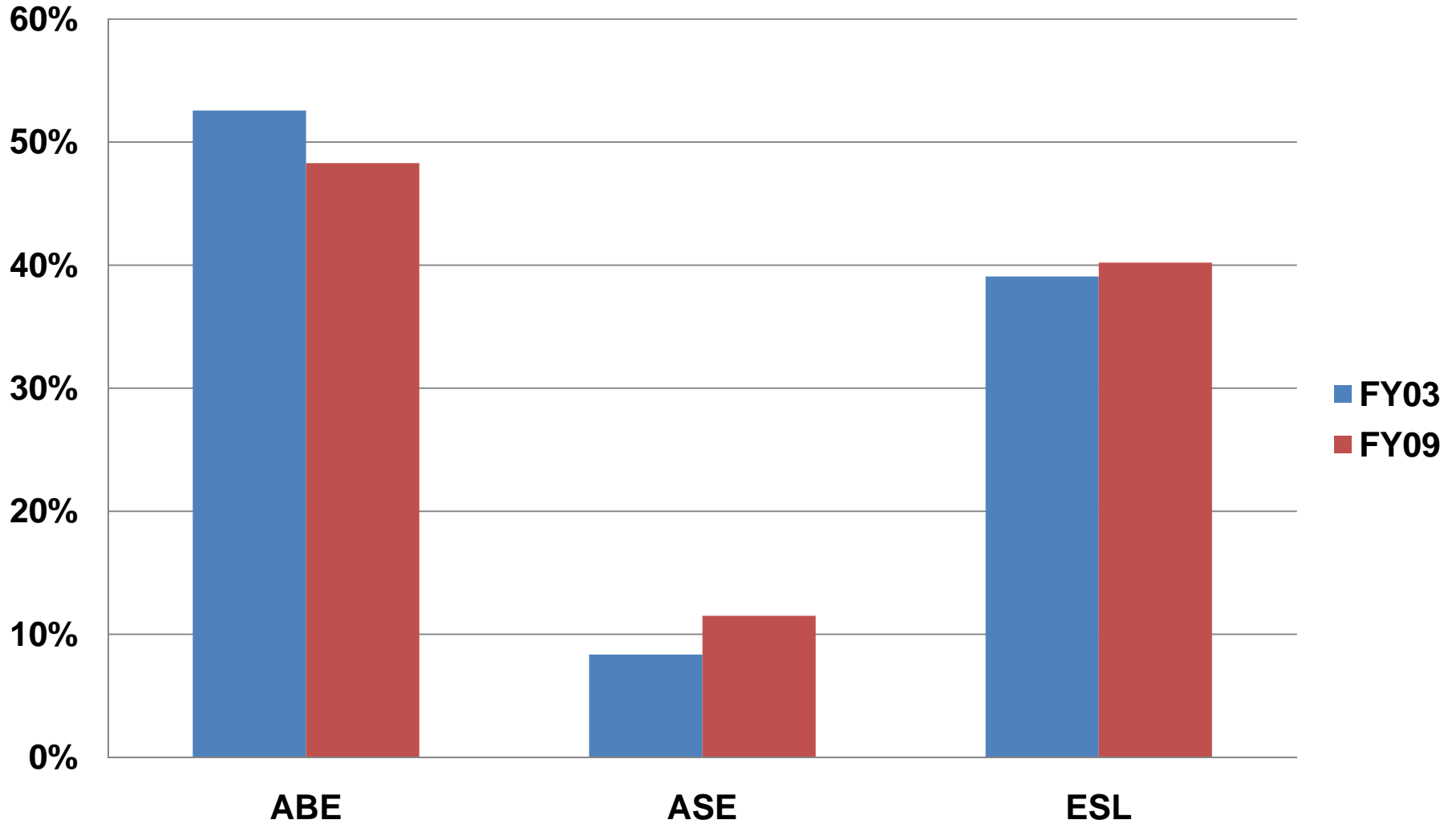
Diversity in Kansas AE Programs FY2003 to FY2009



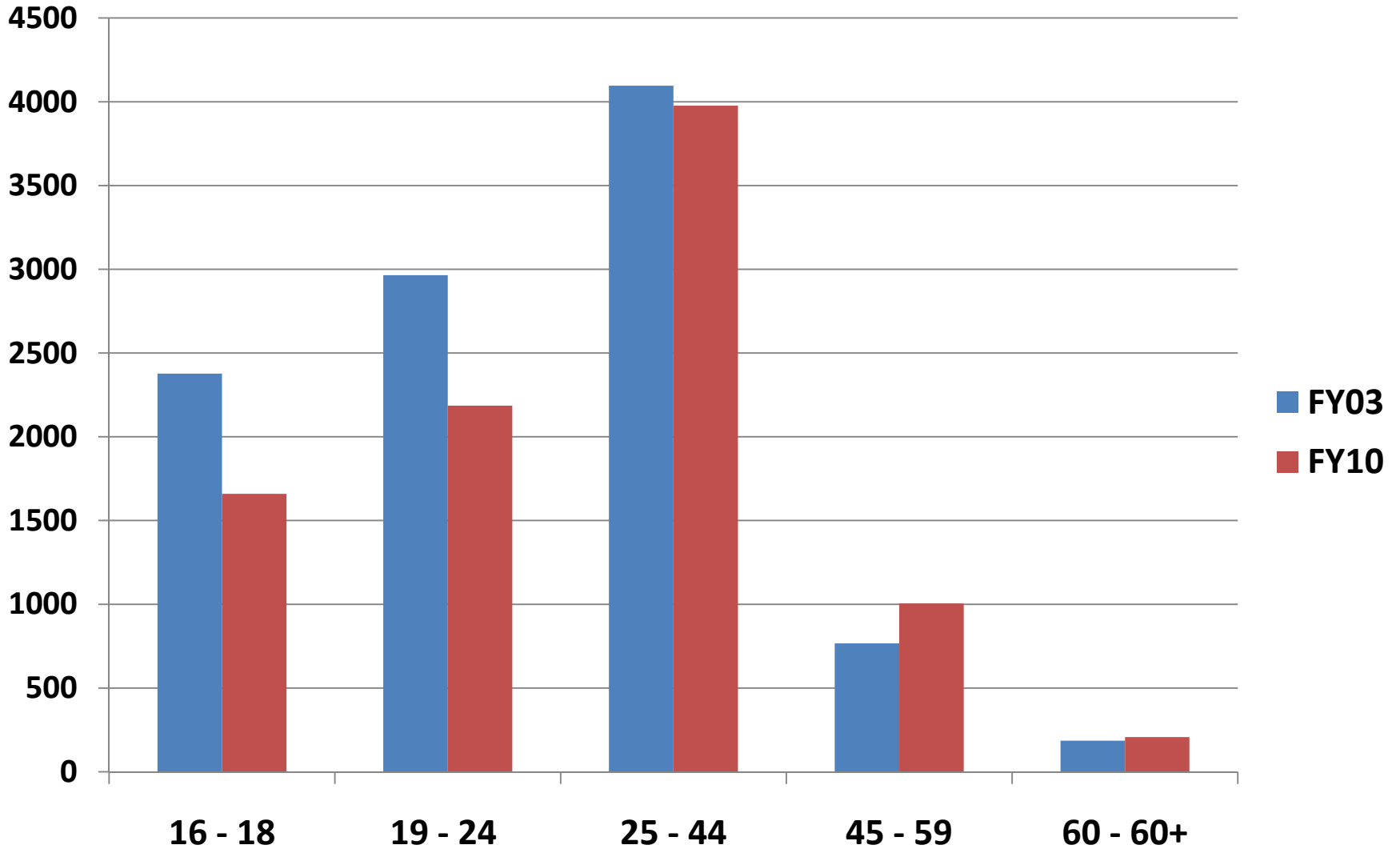
Percent Change in Foreign-Born Population, Cohort 4 (2005-2009)



Kansas AE Learners Served by Program Type FY2003 - FY2009



Age of Kansas AE Participants FY 03 and FY09



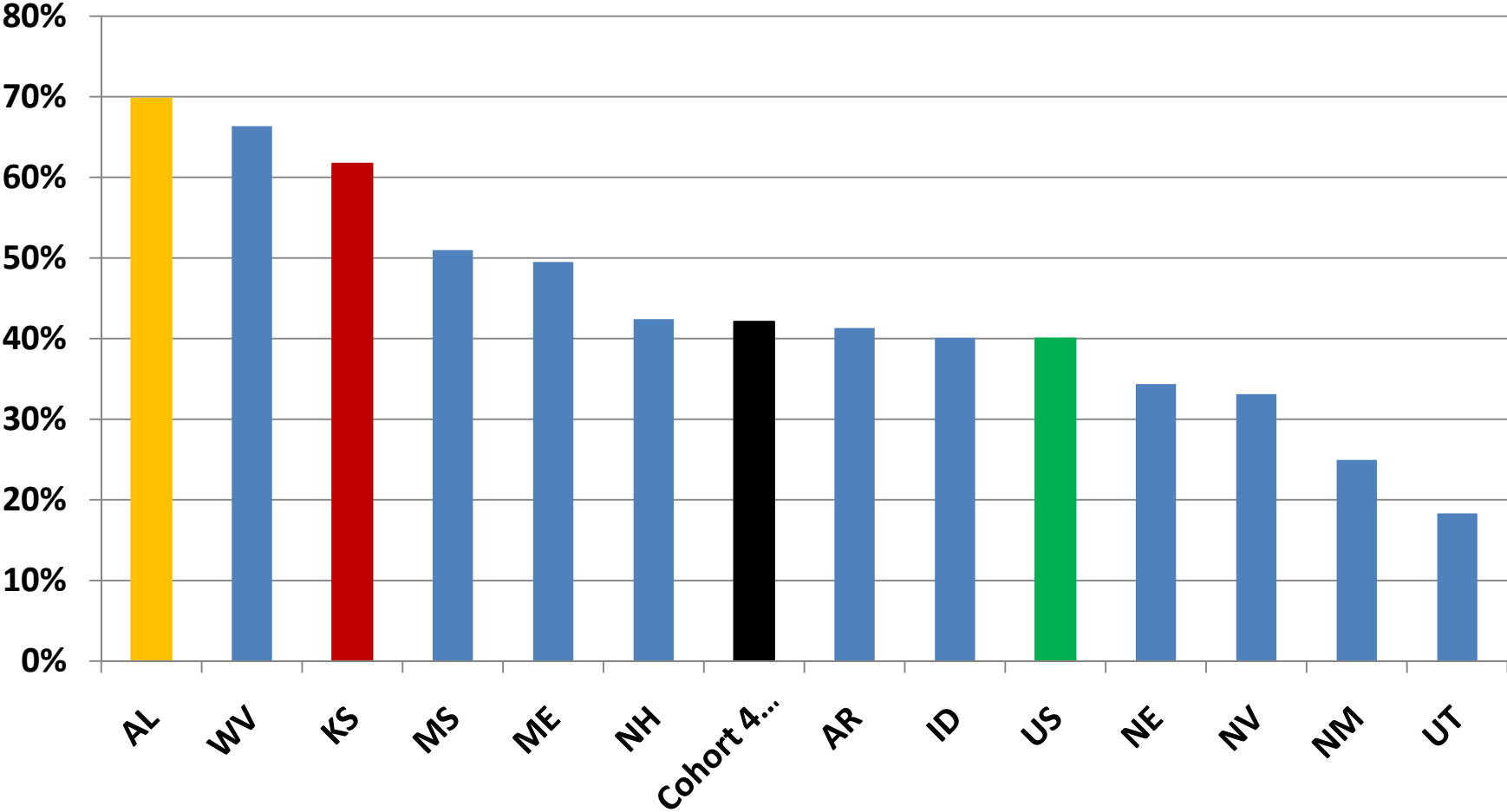


KANSAS BOARD OF REGENTS

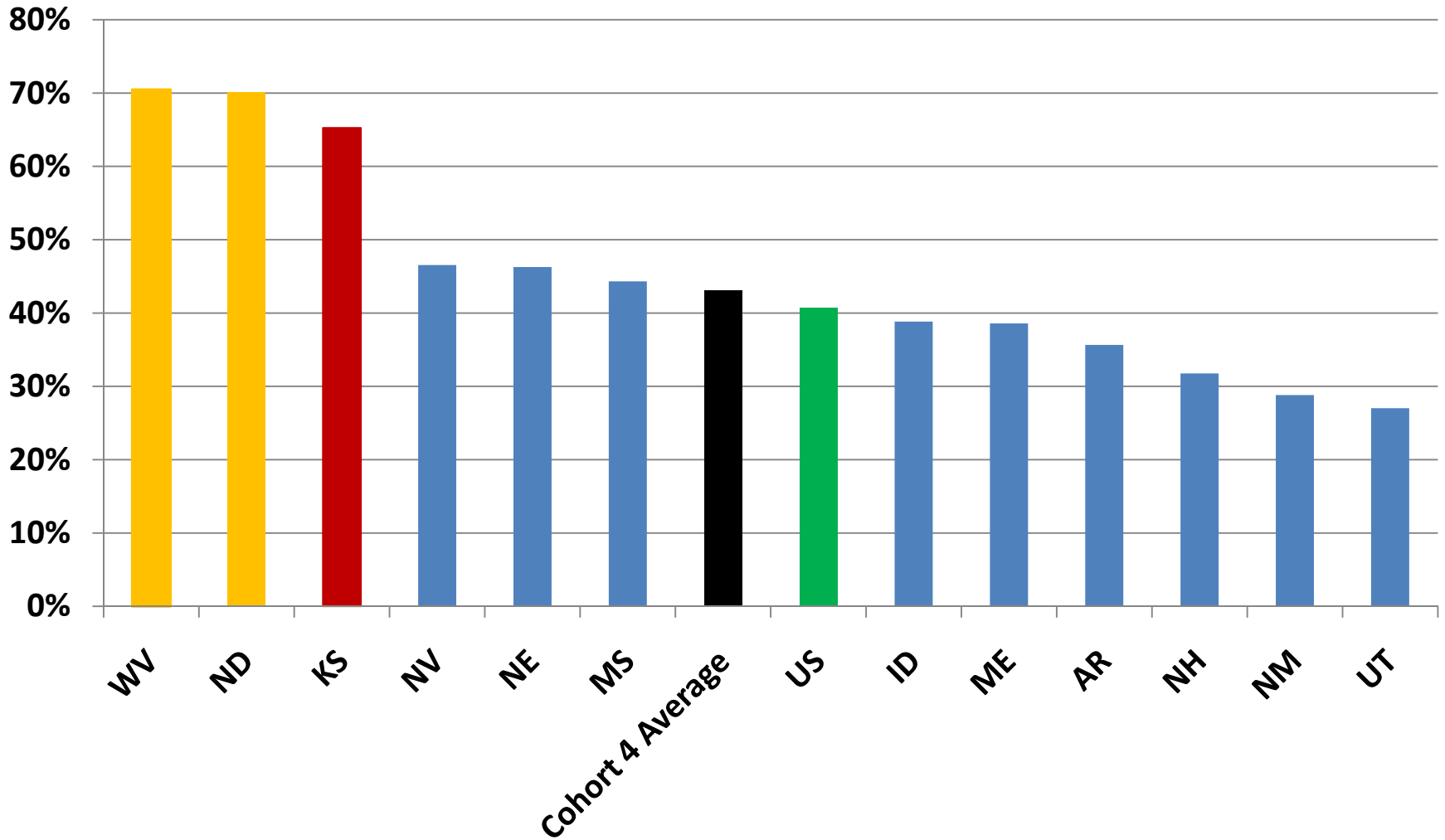
Kansas Adult Education

How are we doing?

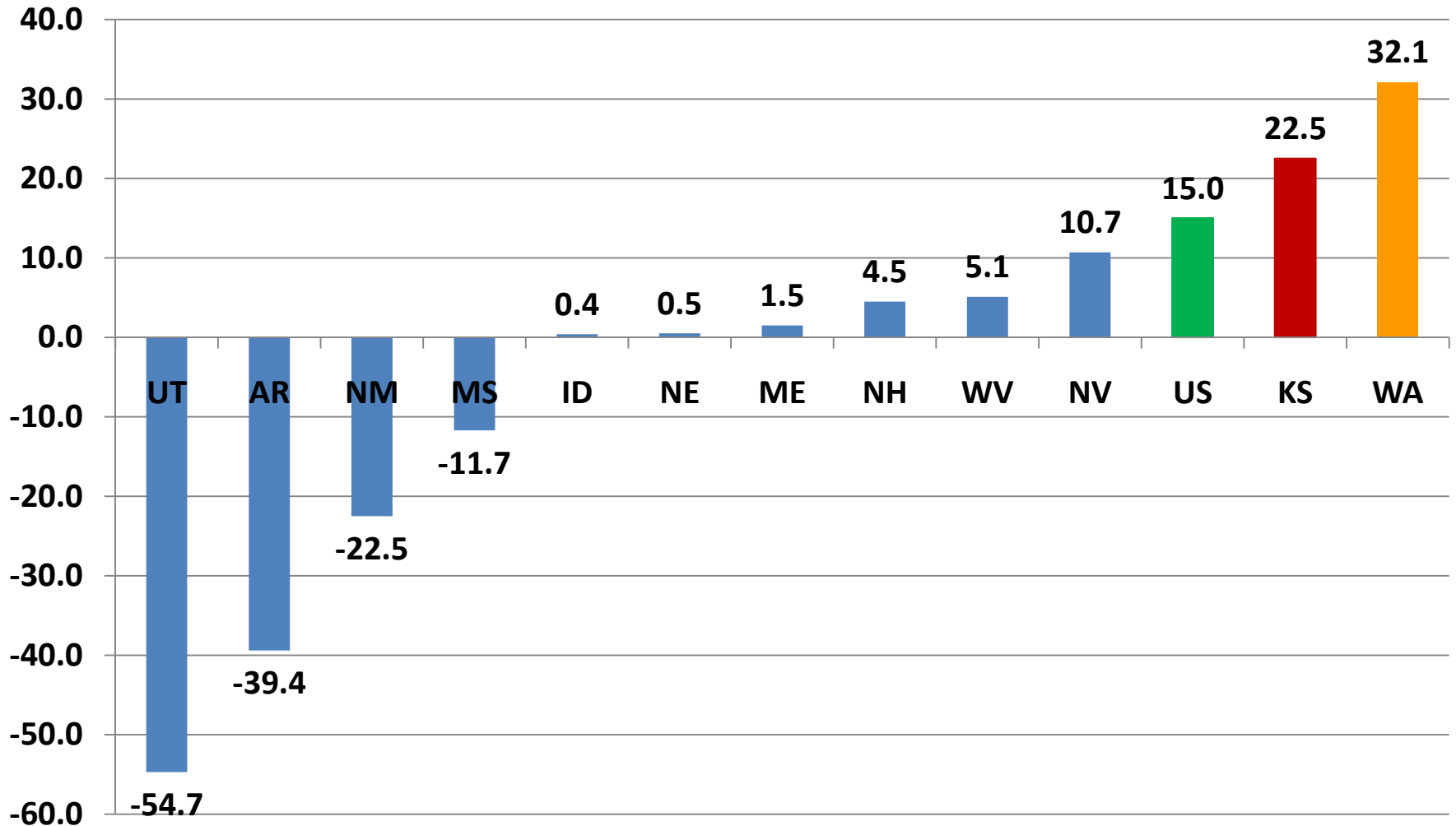
Percent of ABE/ASE Student Completers, PY 2008-09



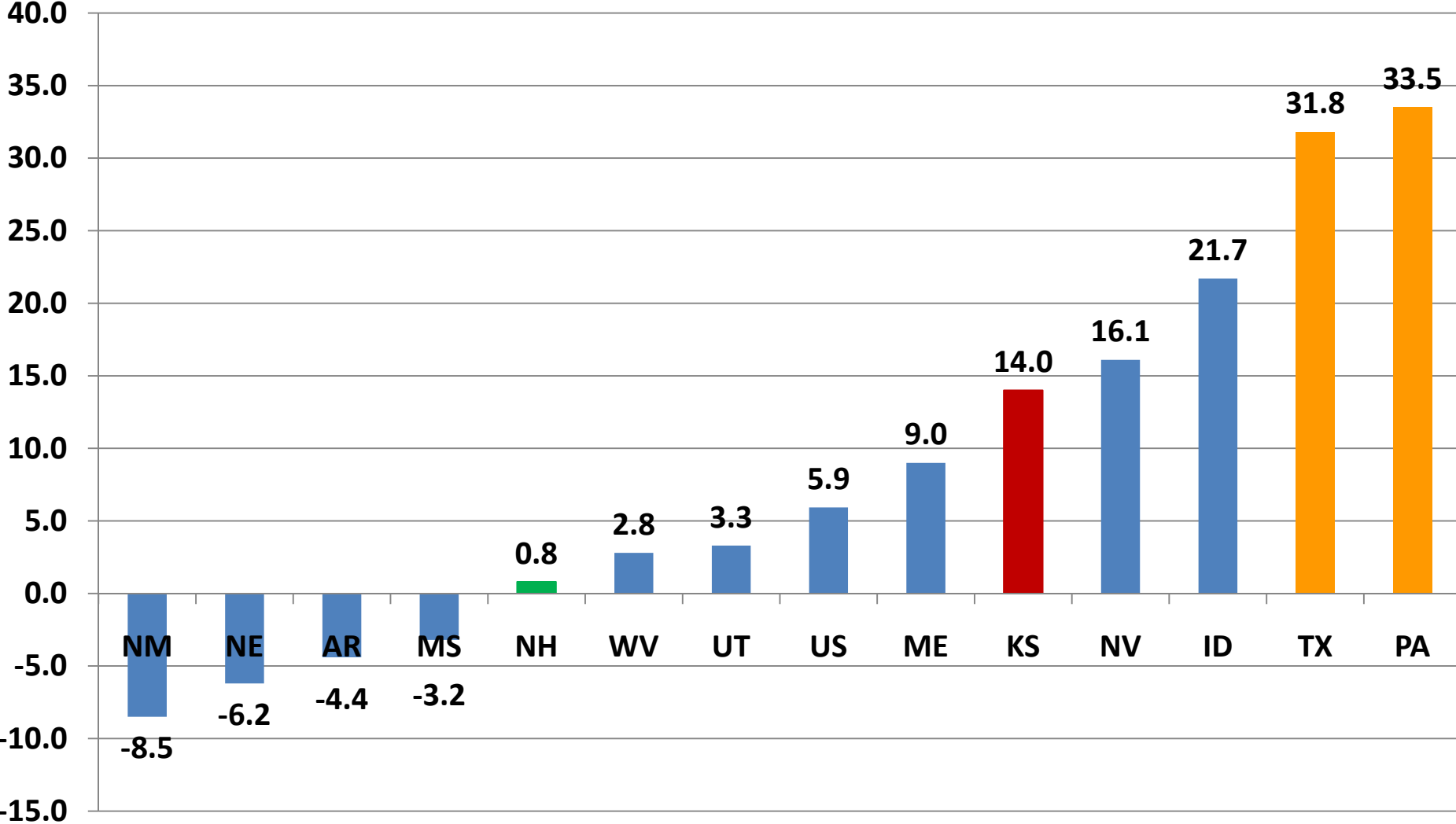
Percent of ESL Student Completers, PY 2008-09



Percent Change in Number of Students Achieving Goal for Entering Postsecondary between PY 2004-05 to PY 2008-09 (Cohort 4)



Percent Change in Number of Students Achieving Goal for Obtaining a GED or HS Diploma between PY 2004-05 to PY 2008-09 (Cohort 4)



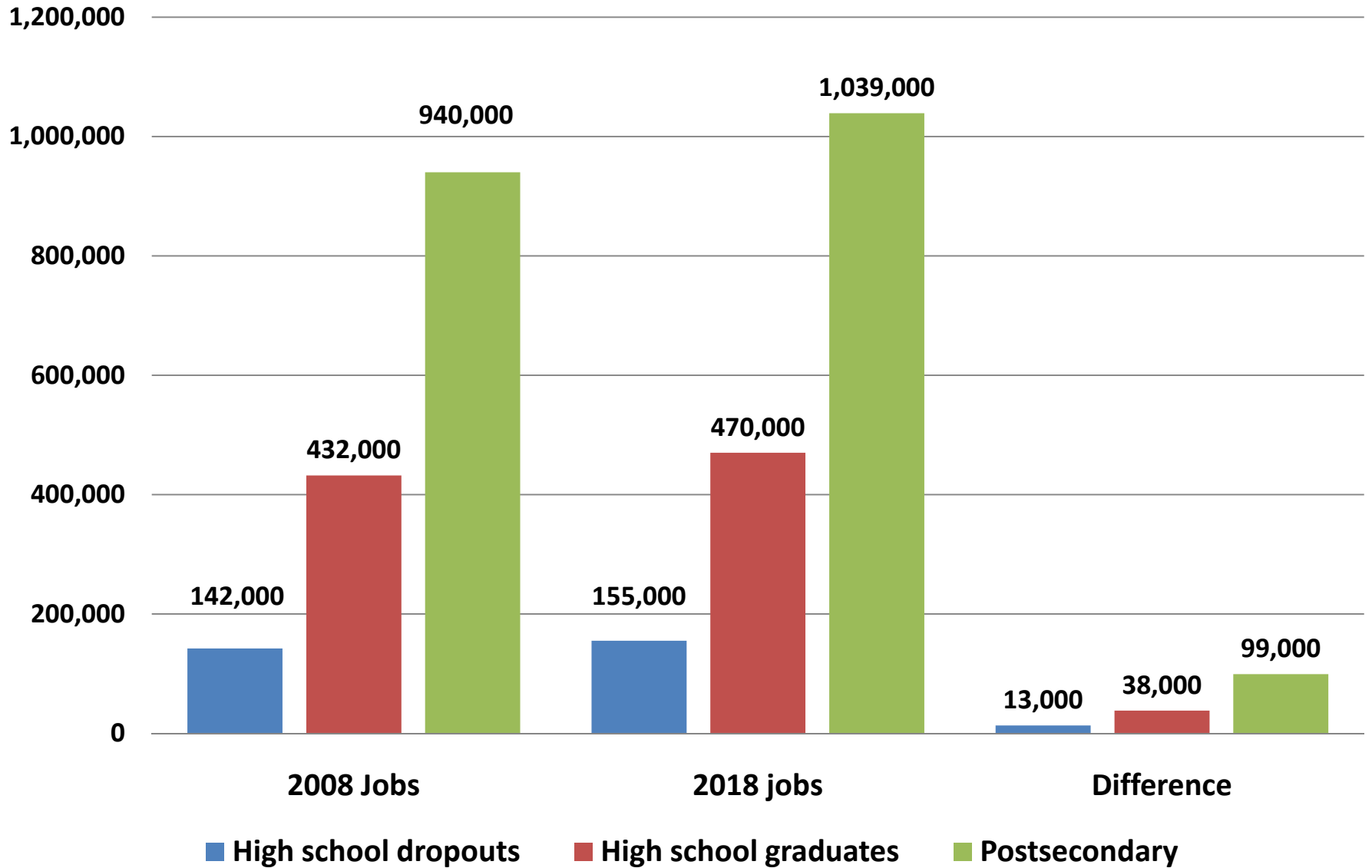


KANSAS BOARD OF REGENTS

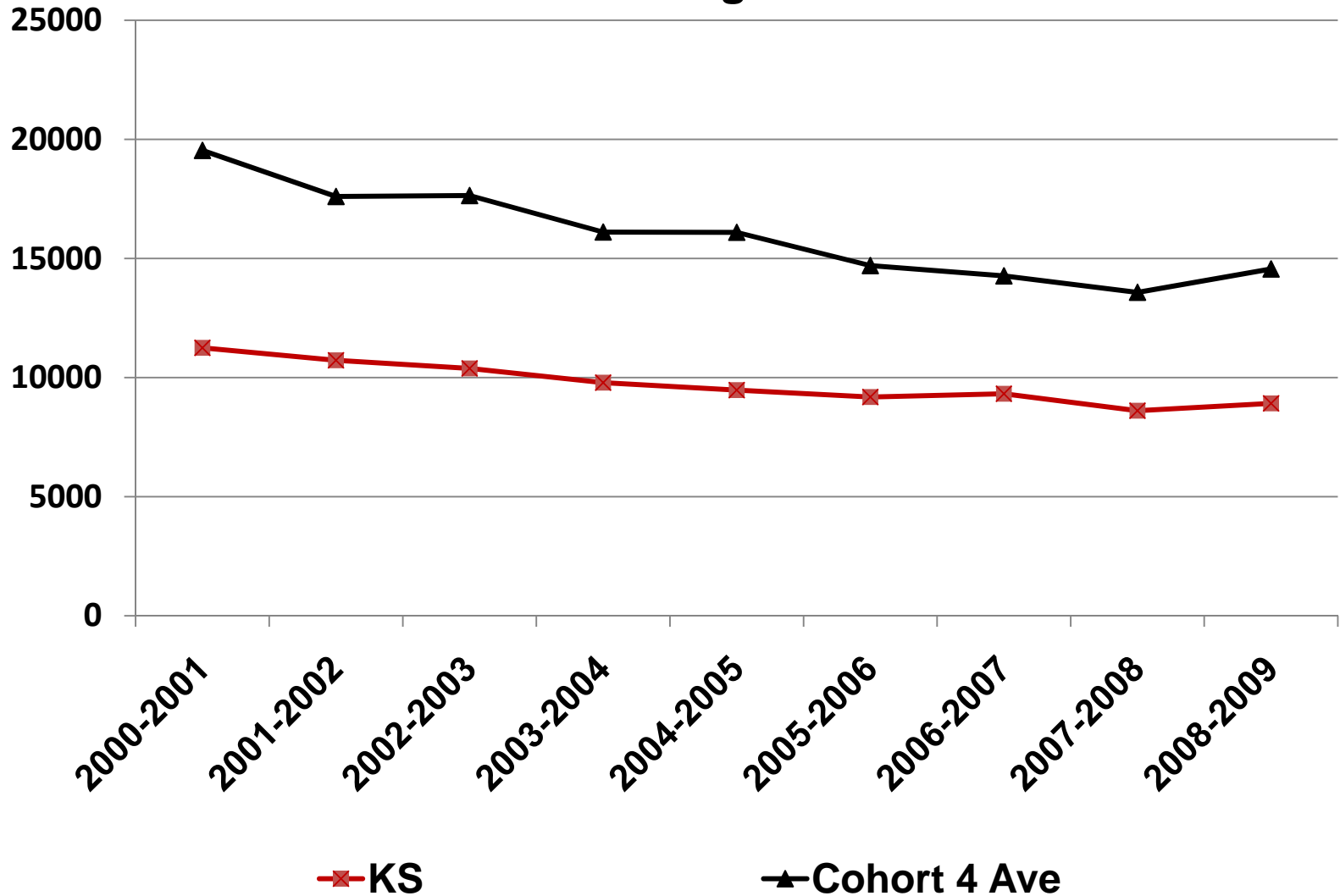
Kansas Adult Education

**But we can—and need to—do
more.**

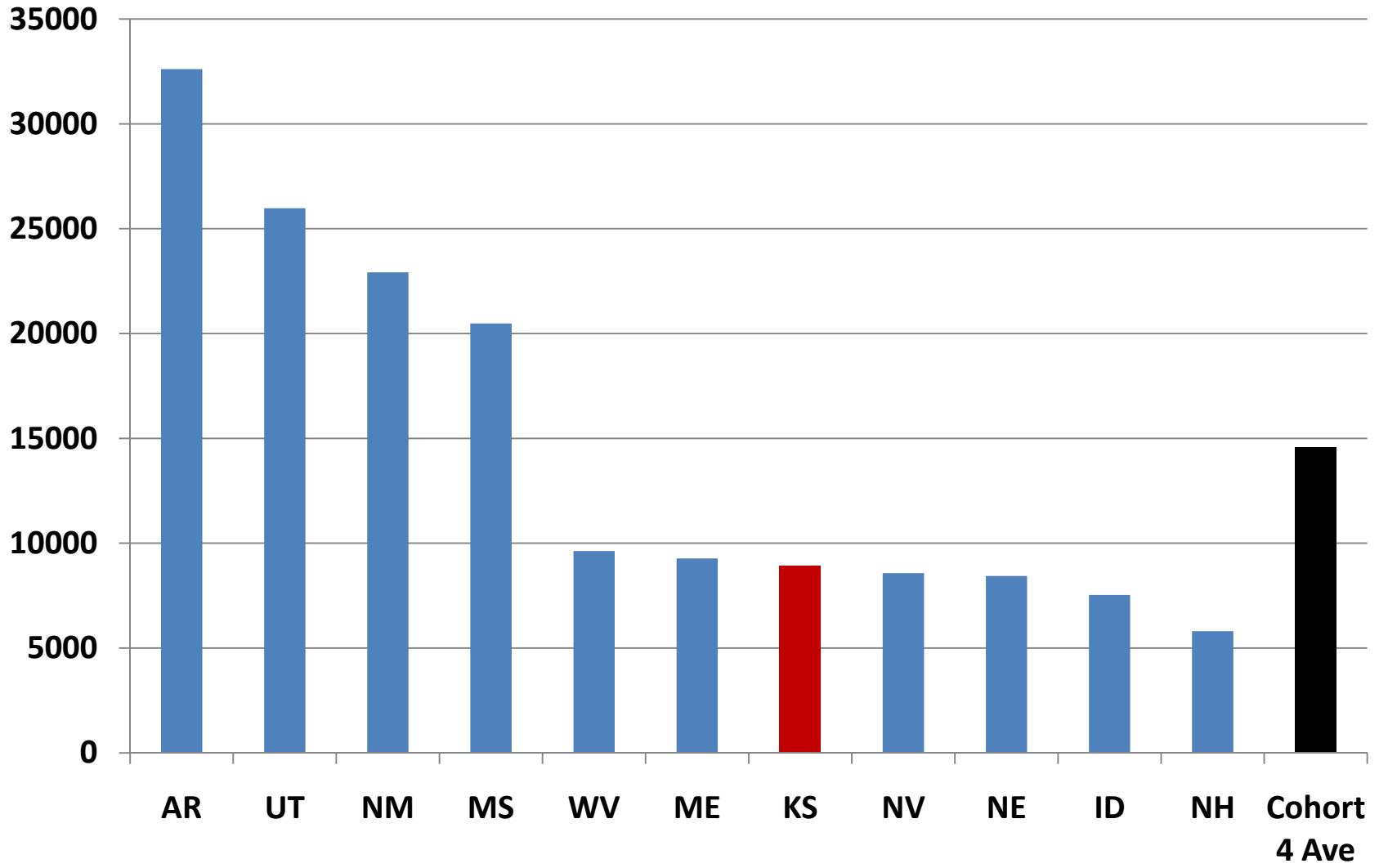
Kansas Change in Jobs by Educational Level: 2008 and 2018



Kansas Total AE Enrollment Comparison to Cohort 4 FY2001 through FY2009

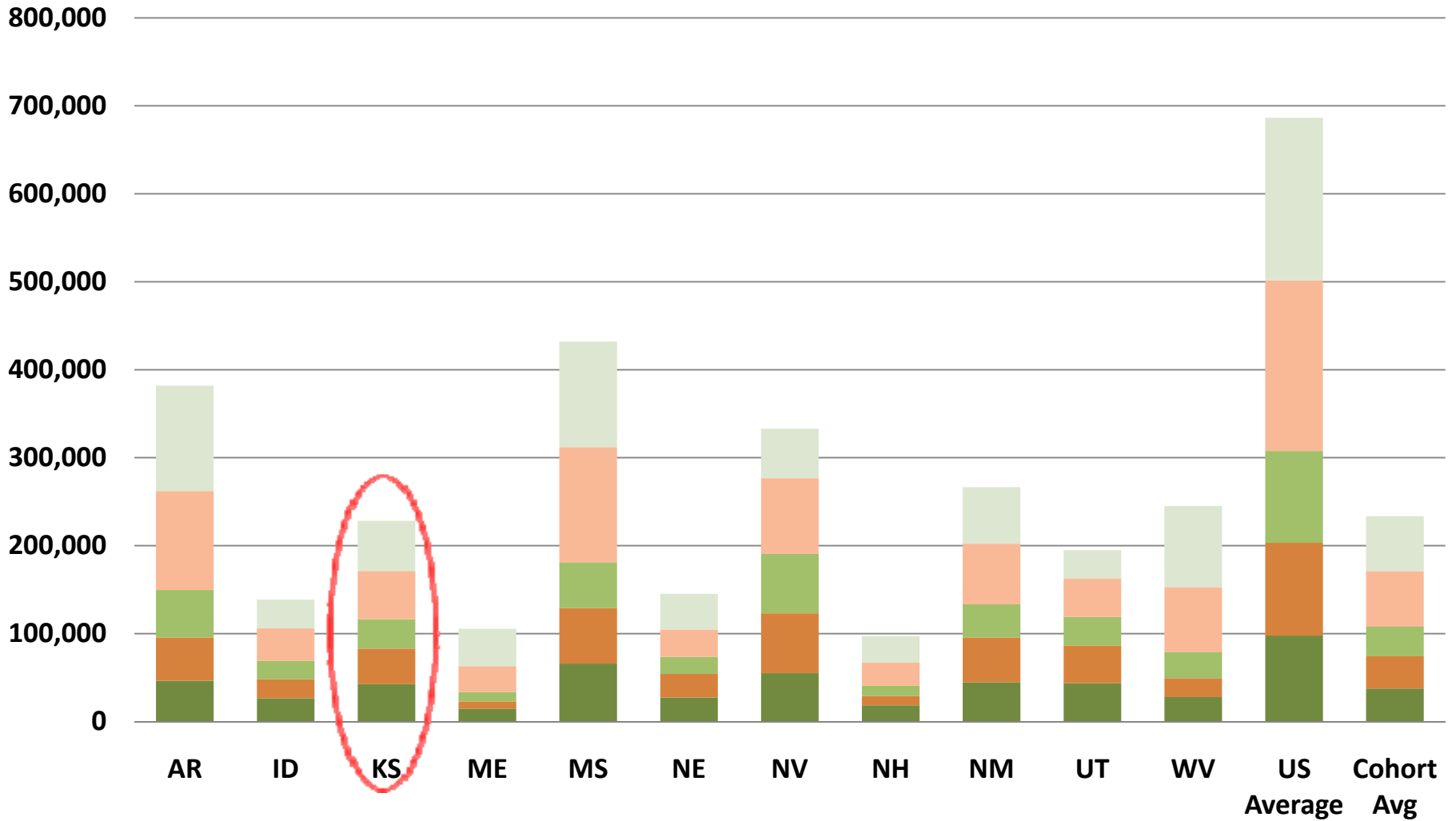


Total Student Enrollment, PY 2008-09



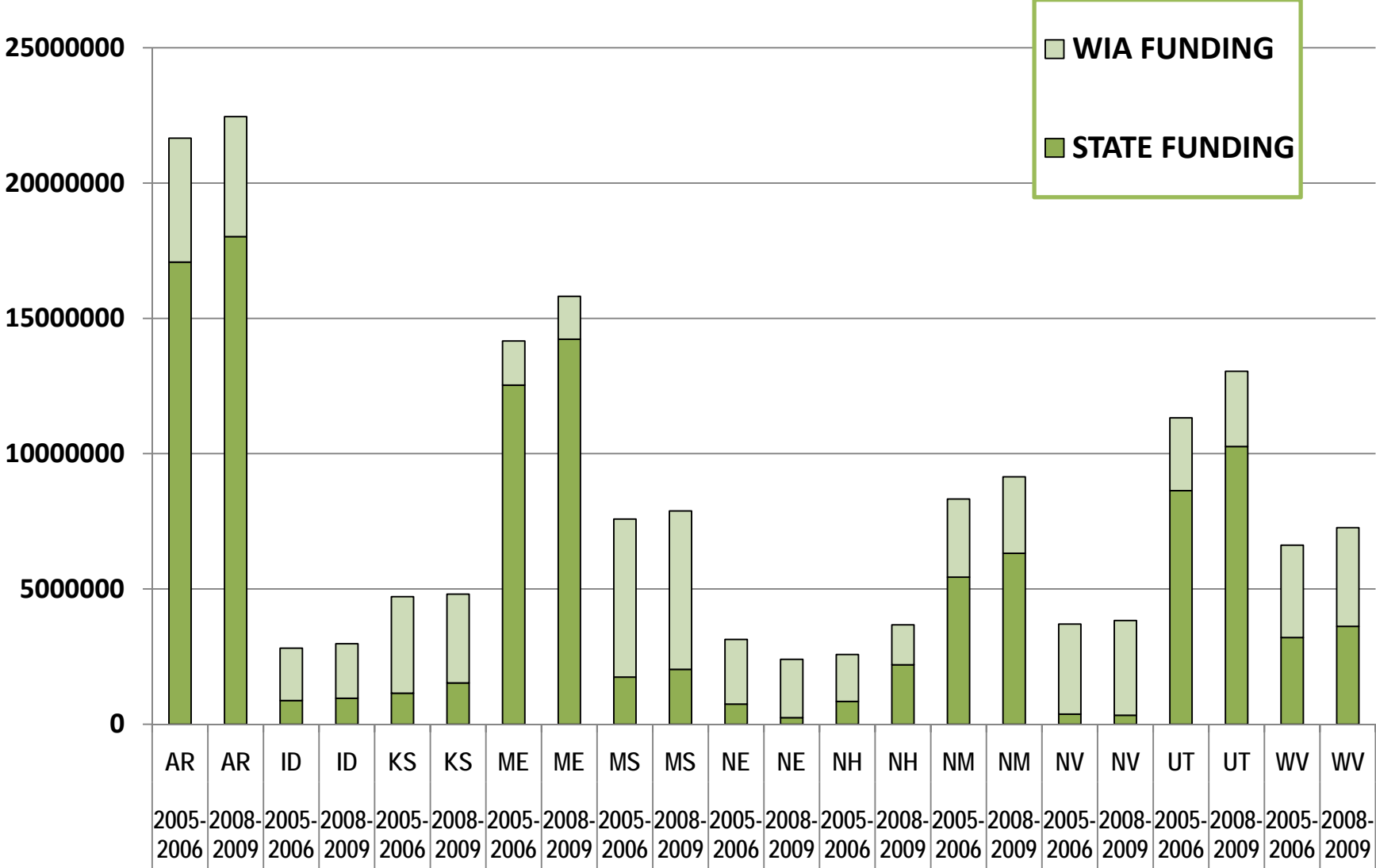
Cohort 4: 2009

Less than H.S. Diploma Ed Attainment by All Age Categories

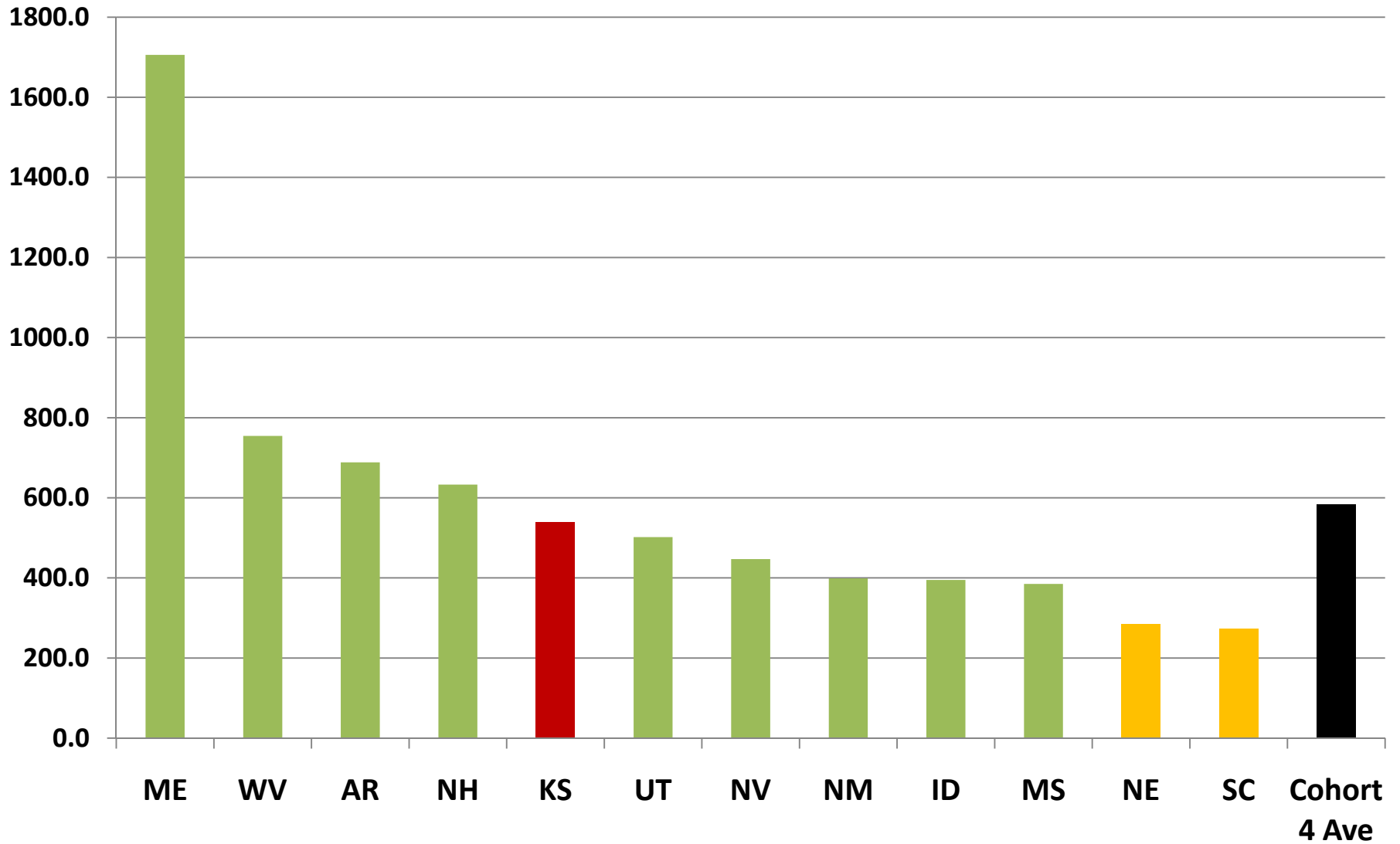


■ TOTAL 18-24 LESS THAN HS
 ■ TOTAL 25-34 LESS THAN HS
 ■ TOTAL 35-44 LESS THAN HS
■ TOTAL 45-64 LESS THAN HS
 ■ TOTAL 65+ LESS THAN HS

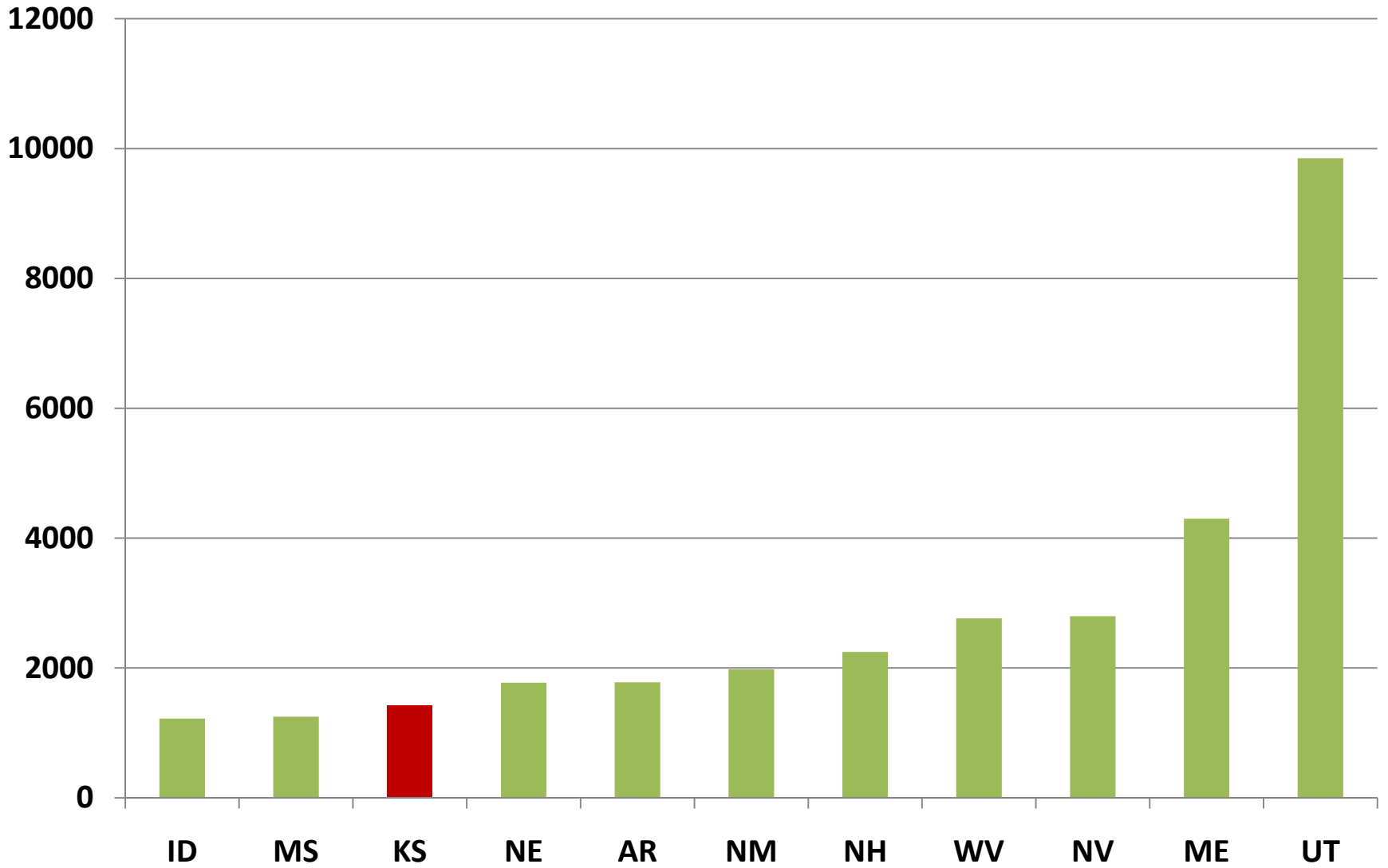
Funding and Sources PY 2004-05 and 2008-09



Per Participant Funding 2008-09



Funding Per Core Outcome 2008-09





KANSAS BOARD OF REGENTS

Implications for Kansas Adult Education

We must

- **increase number of participants served;**
- **increase percentage of limited English proficient adults served; and**
- **increase number of participants transitioning to postsecondary education.**



Kansas Adult Education

KANSAS BOARD OF REGENTS

We have new objectives:

- **Increase ABE/ASE enrollment by 500 students each year from FY2011 to FY2021**
- **Increase ESL enrollment by 300 students each from FY2011 to FY2016**
- **Increase the number of adult education participants who earn a GED by 300 each year from FY2011 to FY2021**
- **Increase the number of adult education participants who earn a Workready! Certificate**
- **By 2021, increase the percentage of ABE/ASE students who transition to postsecondary education to 28%**



Kansas Adult Education

KANSAS BOARD OF REGENTS

To achieve our objectives

- We will build on our strengths...
- We will test new strategies...
- We will work together...



Building on our strengths...

KANSAS BOARD OF REGENTS

- **A top performer in educational level completions nationally—65% overall**
- **Excellent pre- and posttesting rate of 70%**
- **Compared to national data, Kansas AE transitions 10% more than the national average of 3.3% of ABE/ASE students to postsecondary education or training.**



Testing new strategies...

KANSAS BOARD OF REGENTS

- Review ACS data and revise funding policy to encourage AE enrollment growth
- Review the policy on minimum passing scores on Official Practice Test for the GED and its impact on numbers taking the GED battery of tests
- Analyze *Next Step*, KAN-GO and college readiness data to determine impact on PSE outcomes and implement effective strategies identified in the transition projects and model programs



Testing new strategies...

KANSAS BOARD OF REGENTS

- **Identify postsecondary programs with low enrollment numbers, but high demand career areas and research model programs for IET and career pathway models**
- **Develop state-delivered, state-wide distance learning program for ABE/ASE participants**
- **Implement integrated college and career awareness in all Kansas adult education programs**



Working together...

KANSAS BOARD OF REGENTS

- **Develop partnership with *Kansas Bridges to the Future* programs in Manhattan, Dodge City Community College, Garden City Community College and Seward Community College with the corresponding adult education program participants**
- **Expand relationships with Workforce Development and Department of Commerce to develop and implement joint programs and pilot projects integrating education and training.**