

KANSAS BOARD OF REGENTS



The State of Kansas Enrollments

Report to the Board of Regents

Dawn Ressel

January 19, 2011

★ LEADING HIGHER EDUCATION ★



Enrollment Data Snapshots in Time

Preliminary Enrollment

- Preliminary Fall Headcount as of the 20th Class Day
- Press Release (September 23, 2010)
- First Year to do System Total

Fall Census Day Collections

- Fifty Year Aggregate Fall Data (KS Higher Ed Enrollment Rpt)
- Six Year Unit Record Fall Data (KS Postsecondary Data System)

Academic Year Enrollment

- Kansas Postsecondary Data System – Unit Record Level
- Total Enrollment Picture (Summer, Fall, and Spring)
- Reported After Close of Year



PRELIMINARY REPORT FALL 2010

Kansas Board of Regents
 Fall 2010 Preliminary Report (20th day)
 System-wide Headcount

Institution	Fall 2010		Institutional Total	Change From Fall 09*	Pot Change
	Resident	Non-resident			
Emporia State University	4,914	1,348	6,262	-52	-0.8%
Fort Hays State University	6,123	5,760	11,883	575	5.1%
Kansas State University	17,170	6,418	23,588	7	0.0%
University of Kansas- Total	20,164	9,298	29,462	-542	-1.8%
Univ. of Kansas - Lawrence	18,147	8,119	26,266	-560	-2.1%
Univ. of Kansas - Medical Center	2,017	1,179	3,196	18	0.6%
Pittsburg State University	5,078	2,053	7,131	-146	-2.0%
Washburn University Total	7,288	588	7,876	539	7.3%
Washburn University- Main Campus	6,642	588	7,230	578	8.7%
Washburn Institute of Technology	646	0	646	-39	-5.7%
Wichita State University	12,808	1,998	14,806	-17	-0.1%
Public University Total	73,545	27,463	101,008	364	0.4%
Allen County Community College	2,829	113	2,942	-182	-5.8%
Barton County Community College	4,558	615	5,173	692	15.4%
Butler County Community College	9,606	510	10,116	591	6.2%
Cloud County Community College	2,444	237	2,681	-105	-3.8%
Coffeyville Community College	1,629	410	2,039	-18	-0.9%
Colby Community College	1,061	261	1,322	-202	-13.3%
Cowley County Community College	4,437	413	4,850	847	21.2%
Dodge City Community College	1,595	212	1,807	101	5.9%
Fort Scott Community College	1,814	315	2,129	112	5.6%
Garden City Community College	1,769	240	2,009	-45	-2.2%
Highland Community College	3,327	242	3,569	-115	-3.1%
Hutchinson Community College	5,250	380	5,630	177	3.2%
Independence Community College	1,017	147	1,164	-13	-1.1%
Johnson County Community College	19,133	1,736	20,869	468	2.3%
Kansas City KS Community College	7,254	312	7,566	429	6.0%
Labette Community College	1,580	182	1,762	-252	-12.5%
Neosho County Community College	2,041	267	2,308	40	1.8%
Pratt Community College	1,470	194	1,664	77	4.9%
Seward County Community College	1,538	336	1,874	7	0.4%
Community Colleges total	74,352	7,122	81,474	2,609	3.3%
Flint Hills Technical College	679	0	679	74	12.2%
Manhattan Area Technical College	662	2	664	79	13.5%
North Central KS Technical College	763	0	763	50	7.0%
Northwest KS Technical College	371	13	384	93	32.0%
Salina Area Technical College	396	0	396	55	16.1%
Wichita Area Technical College	2,016	14	2,030	-87	-4.1%
Technical Colleges total	4,887	29	4,916	264	5.7%
System Total	152,784	34,614	187,398	3,237	1.8%

Source: Preliminary Enrollment Collection

CENSUS DAY FALL 2010



Systemwide Headcount Enrollment Fall 2010 Academic Semester

INSTITUTIONS	STUDENTS	CHANGE (09-10)	% CHANGE (09-10)
State Universities (6)	93,131	-176	-0.18%
Washburn* (1)	8,068	+731	+9.9%
Community Colleges (19)	81,171	+2,306	+2.9%
Technical Colleges (6)	5,048	+396	+8.5%
System Total (32)	187,418	+3,257	+1.8%

*Washburn Institute of Technology included.



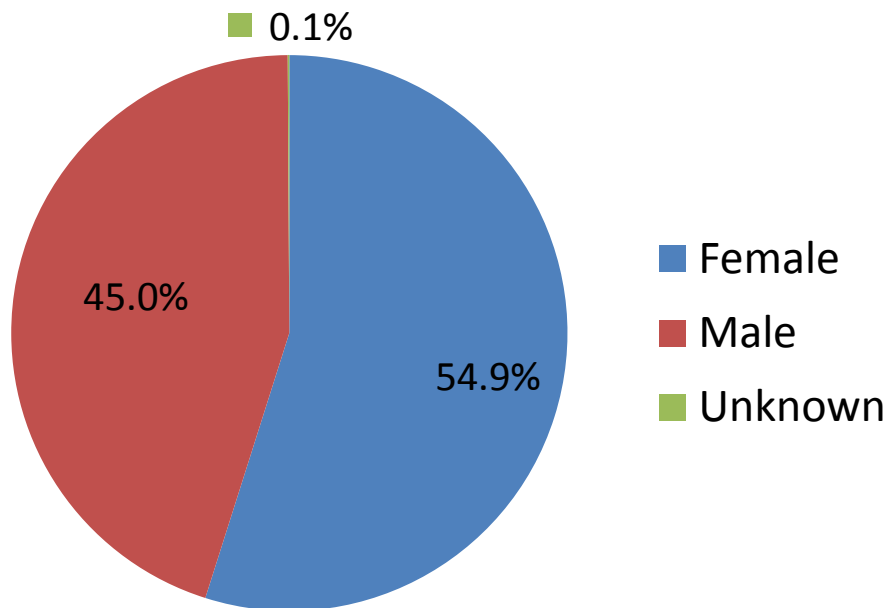
Systemwide Full Time Equivalent (FTE) Fall 2010 Academic Semester

INSTITUTIONS	STUDENTS	CHANGE (09-10)	% CHANGE (09-10)
State Universities (6)	75,327	+87	-0.1%
Washburn* (1)	6,256	+402	+6.9%
Community Colleges (19)	49,762	+1,877	+3.9%
Technical Colleges (6)	4,222	+377	+9.8%
System Total (32)	135,567	+2,743	+2.0%

*Washburn Institute of Technology included.



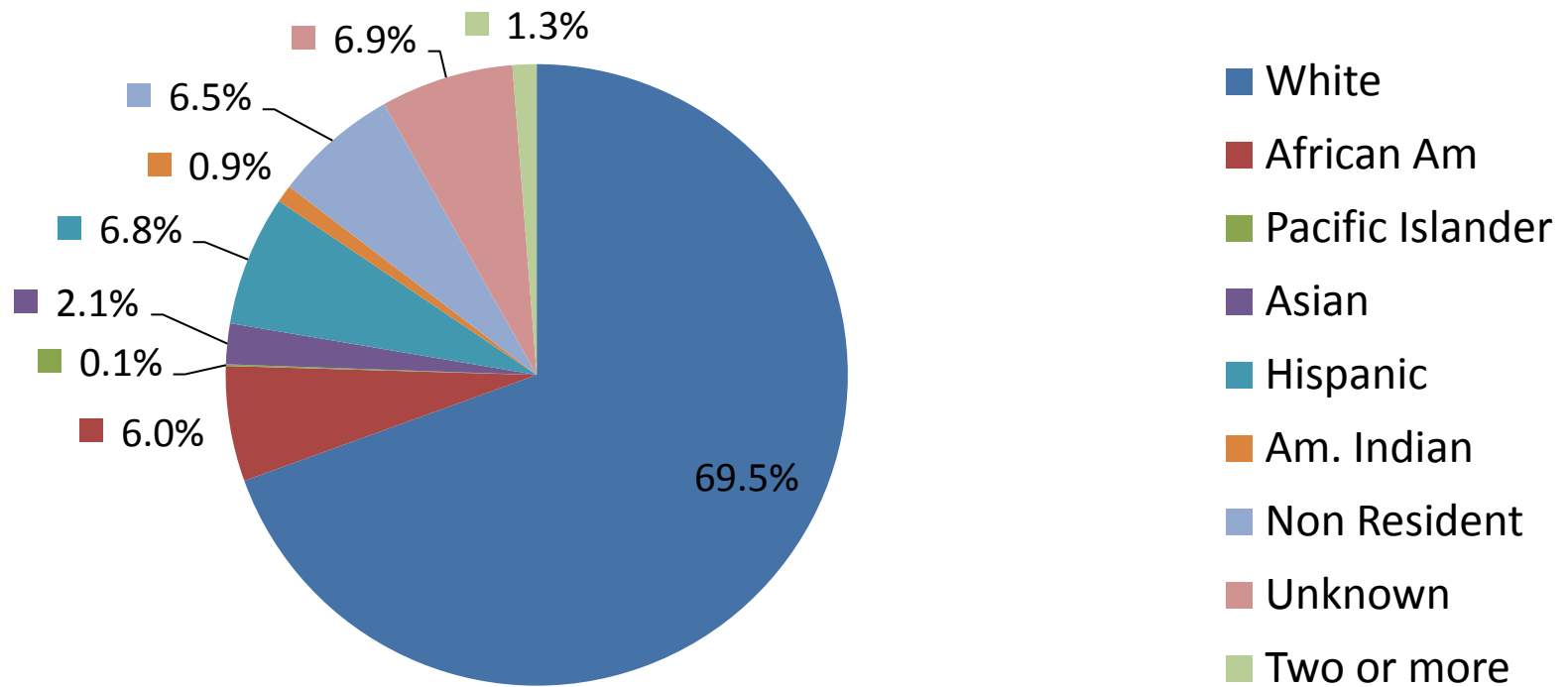
Fall Census Day Enrollment 2010 by Gender



- ★ **US percentages (2007)**
 - **Female 57%**
 - **Male 43%**
- ★ **Projected National (2018)**
 - **Female 59%**
 - **Male 41%**



Fall Census Day Enrollment 2010 by Ethnicity





ACADEMIC YEAR ENROLLMENTS

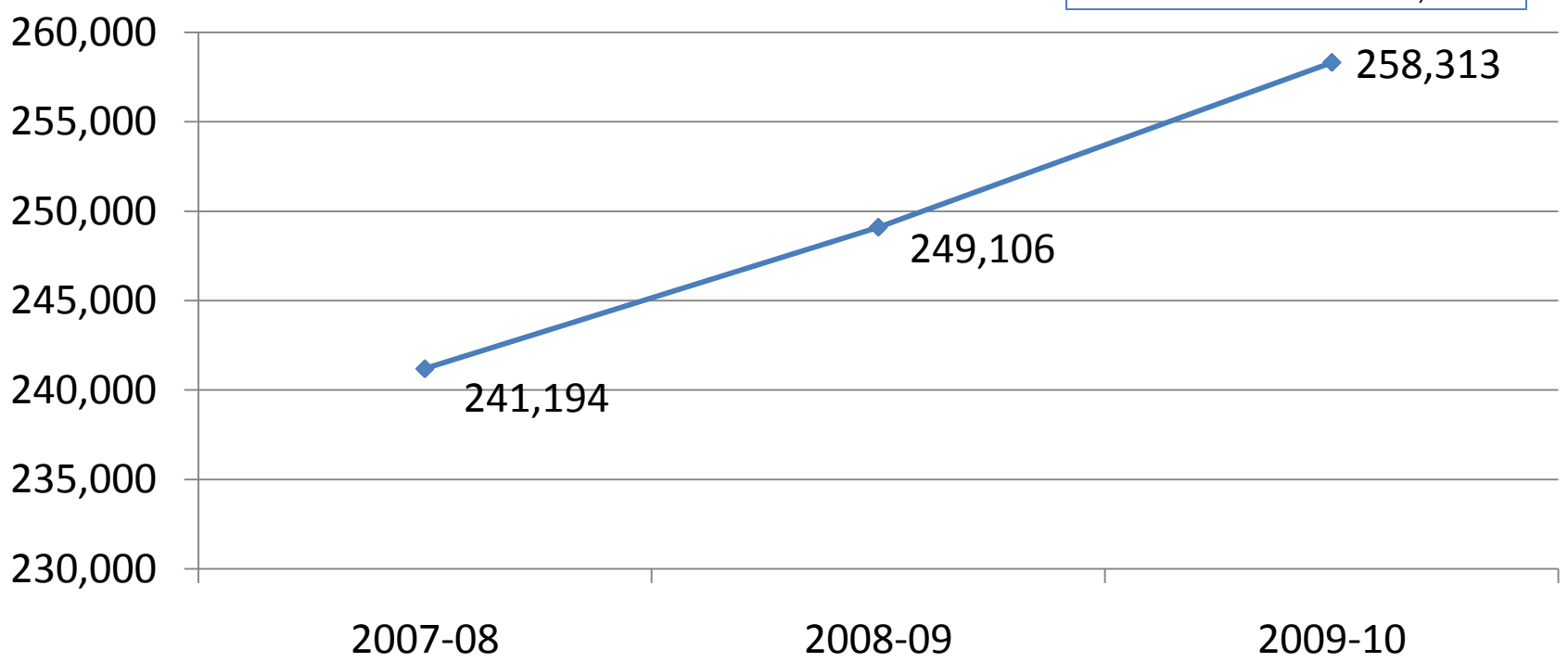
AY2010 = SUMMER 09, FALL 09, AND SPRING 10



Systemwide Headcount Enrollment Academic Year Trends

Headcount

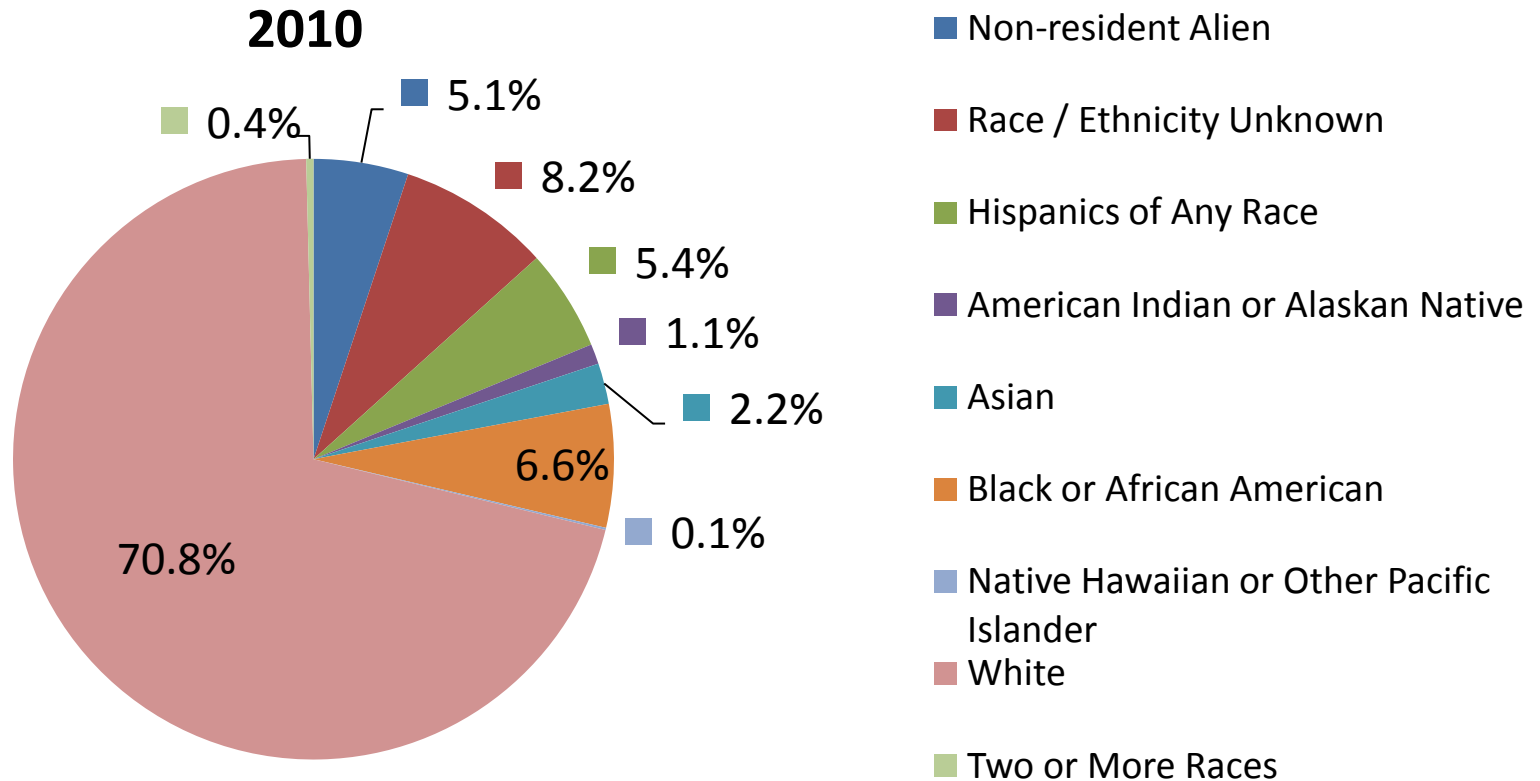
Fall 2010 Headcount = 187,418



Source: KSPSD Academic Year Collection



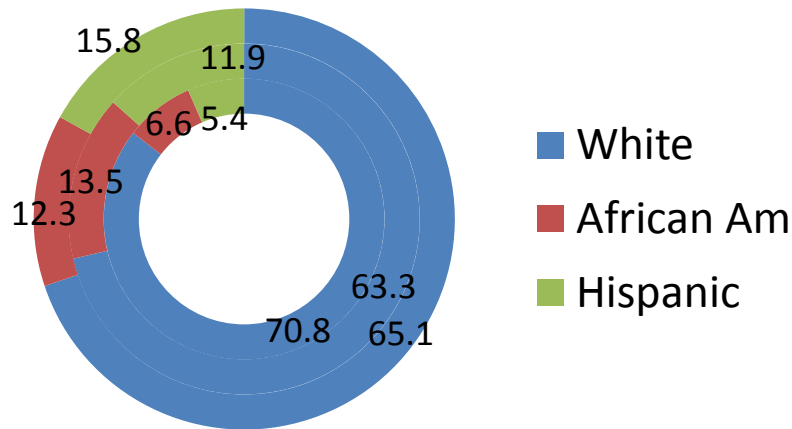
Systemwide Race/Ethnicity Percent Academic Year 2009-2010



Source: KSPSD Academic Year Collection

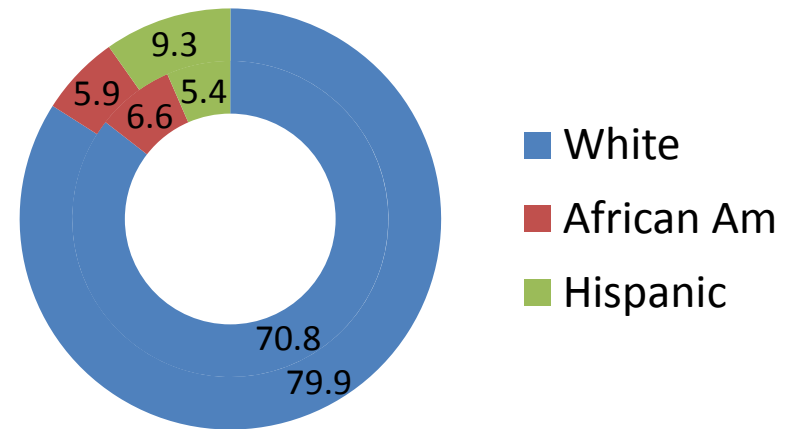


Race Enrollment Percents Kansas Schools compared to Nation



Kansas Public school on inside circle; National enrollment on middle circle; National Demographics on outside circle

Race Enrollment Percents Kansas Schools compared to State Demographics



Kansas Public school on inside circle; State Demographics on outside circle



Average Student Age

	2008	2009	2010
State Universities	26.2	26.0	26.0
Washburn*	26.6	26.5	25.5
Community Colleges	27.5	27.0	27.1
Technical Colleges	28.0	28.7	28.8
Total	26.9	26.6	26.6

*Washburn Institute of Technology included.
Calculation based on all students enrolled

Source: KSPSD Academic Year Collection



Residency

	2008		2009		2010	
	Resident (In State)	Non-resident (Out state)	Resident (In State)	Non-resident (Out State)	Resident (In State)	Non-resident (Out State)
State Universities	79,855	27,860	79,230	29,538	78,243	30,934
Washburn*	8,707	667	8,284	652	8,570	709
Community Colleges	106,991	10,673	111,887	11,133	119,450	11,713
Technical Colleges	6,401	40	8,368	14	8,667	27
Total	201,954	39,240	207,769	41,337	214,930	43,383

*Washburn Institute of Technology included.

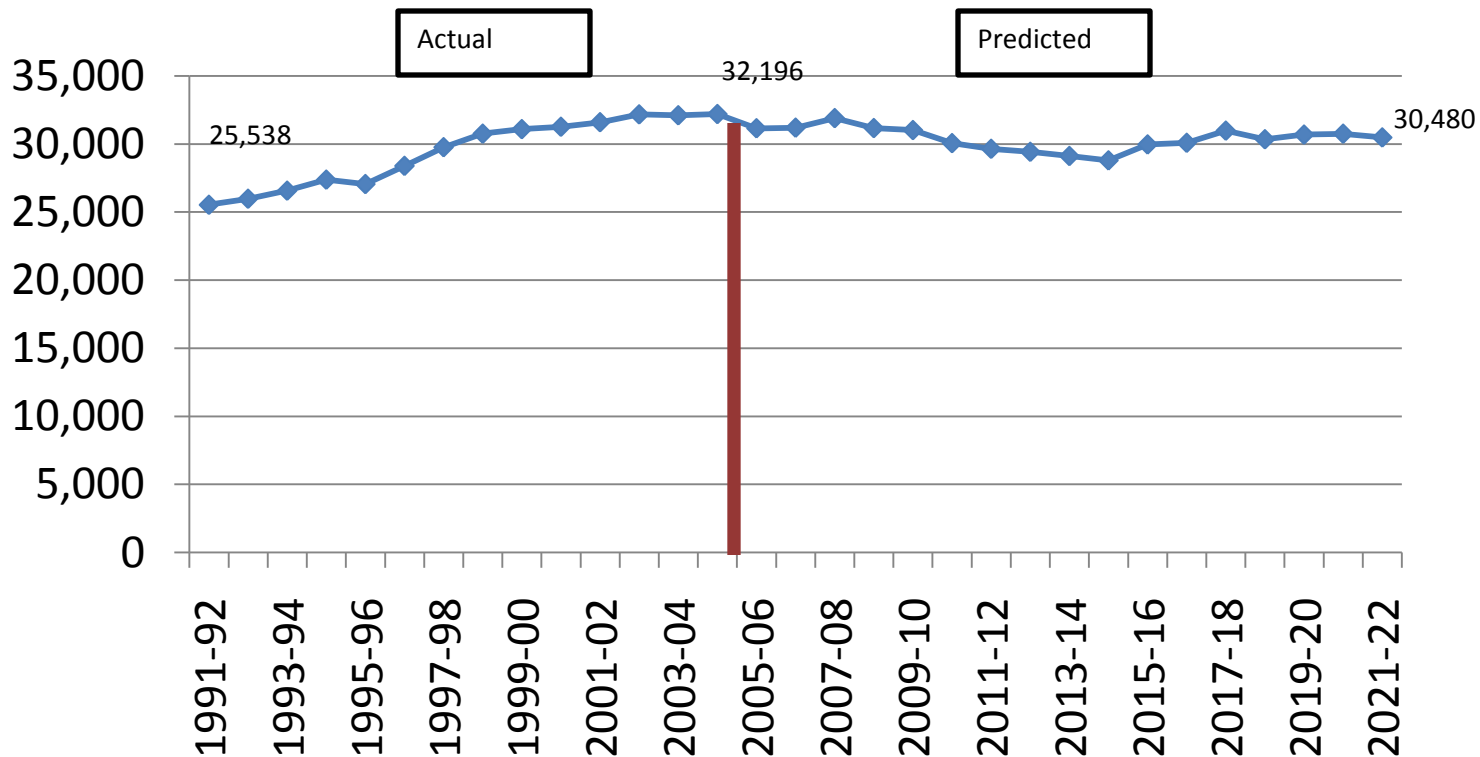
Source: KSPSD Academic Year Collection



POPULATIONS AND CHARACTERISTICS OF ENTERING STUDENTS



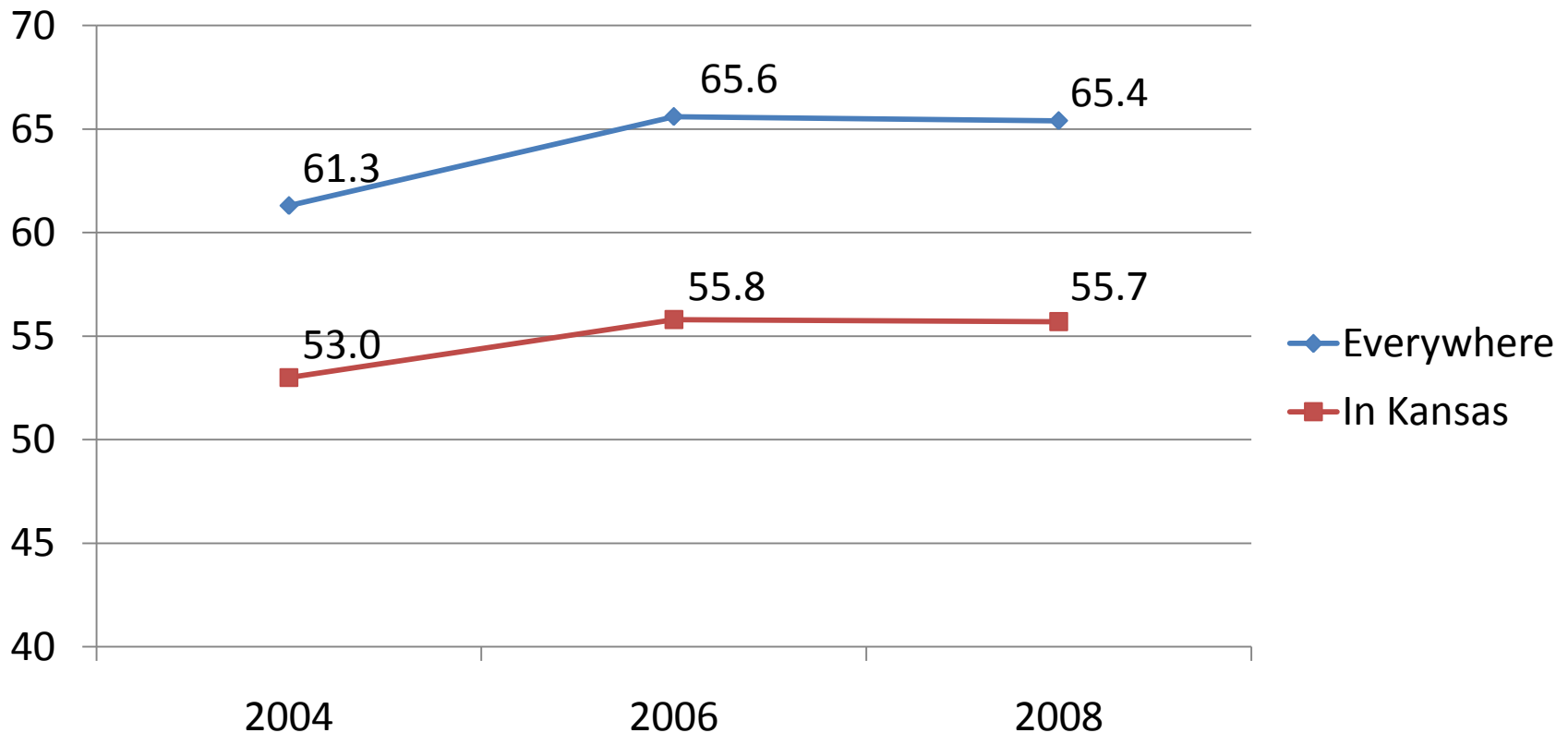
Kansas High School Graduates



Source: Western Interstate Commission for Higher Education, 2008.



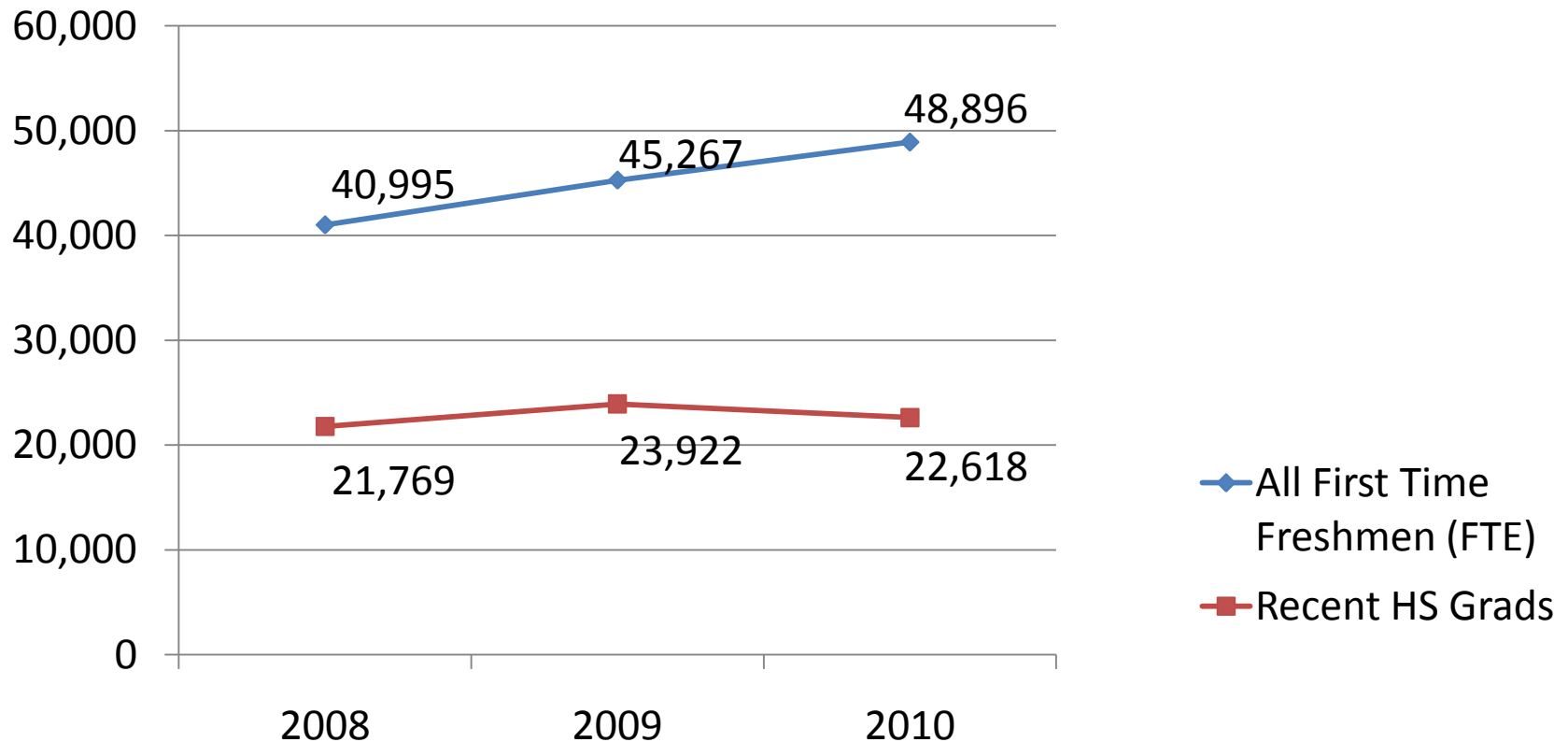
College Going Rate



SOURCE: U.S. Department of Education, National Center for Education Statistics, Common Core of Data (CCD), Common Core of Data State Dropout and Completion Data File, "Private School Survey (PSS),"



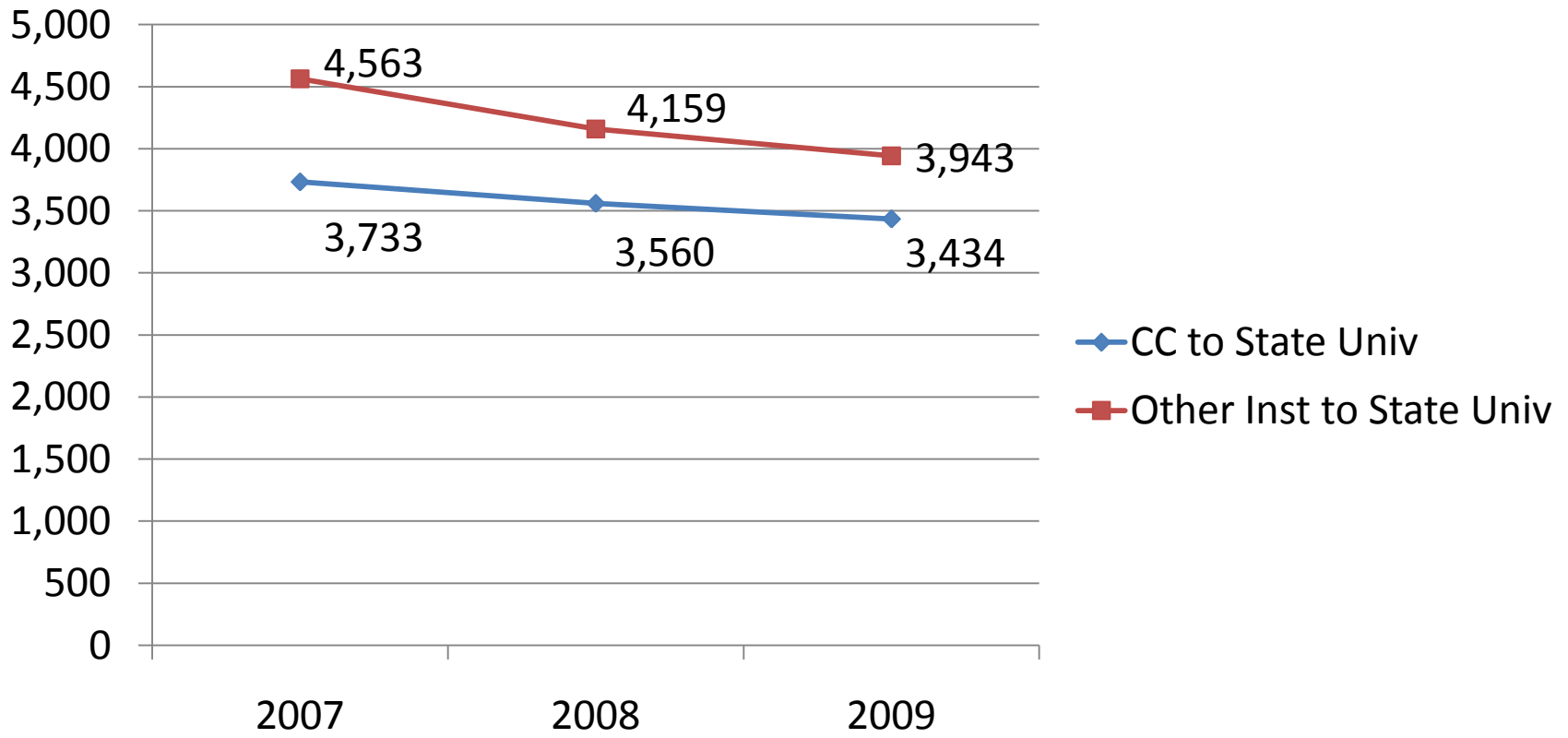
First-Time Entering Students



Source: KSPSD Academic Year Collection



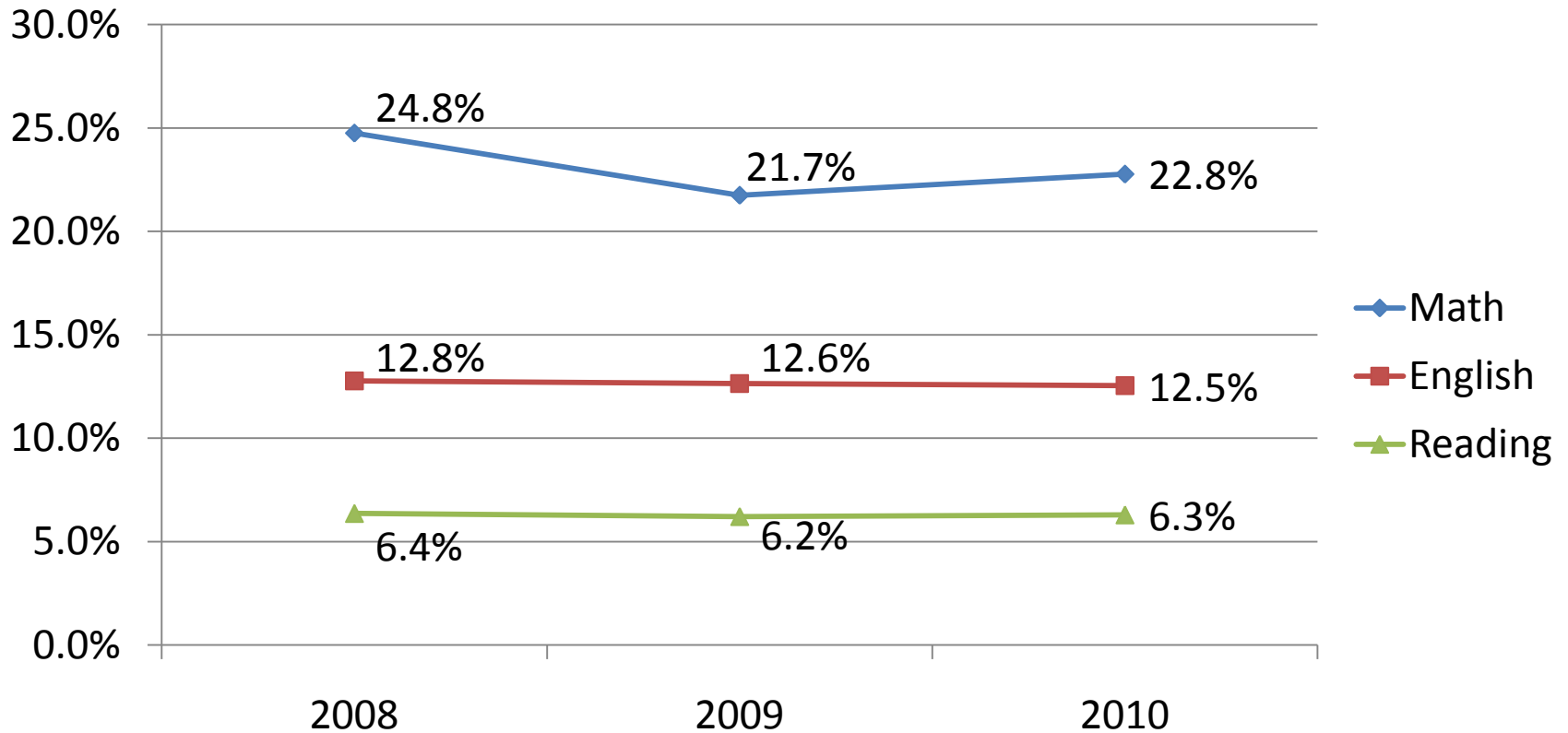
Transfer Students



Source: KSPSD Academic Year Collection



Recent HS Grads Taking Developmental Coursework

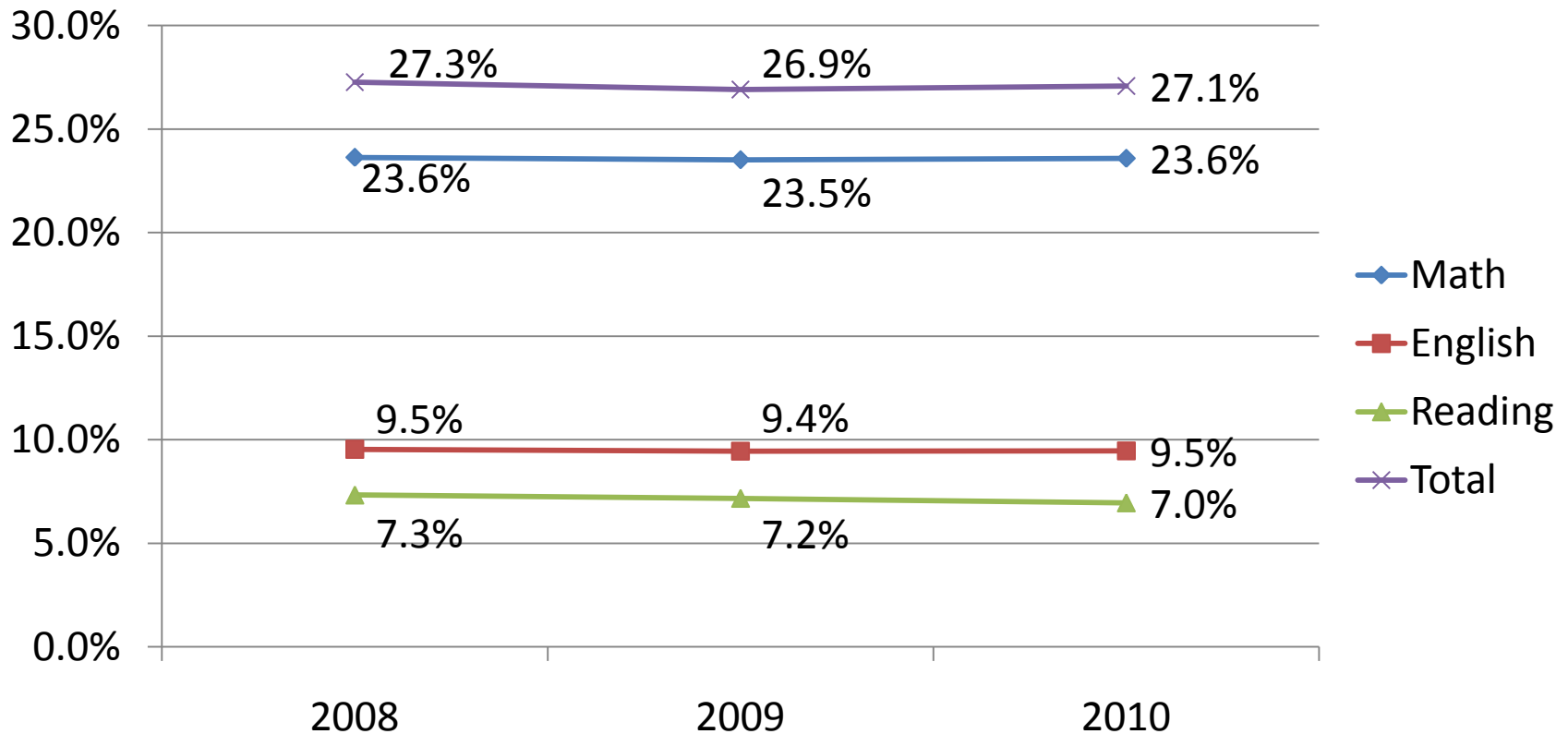


Source: KSPSD Academic Year Collection

Excludes Technical Colleges; No Engl or Reading Remedial Coursework from Ft Hays, KU, and Pittsburg State.



Recent HS Grads Recommended for Remedial Coursework



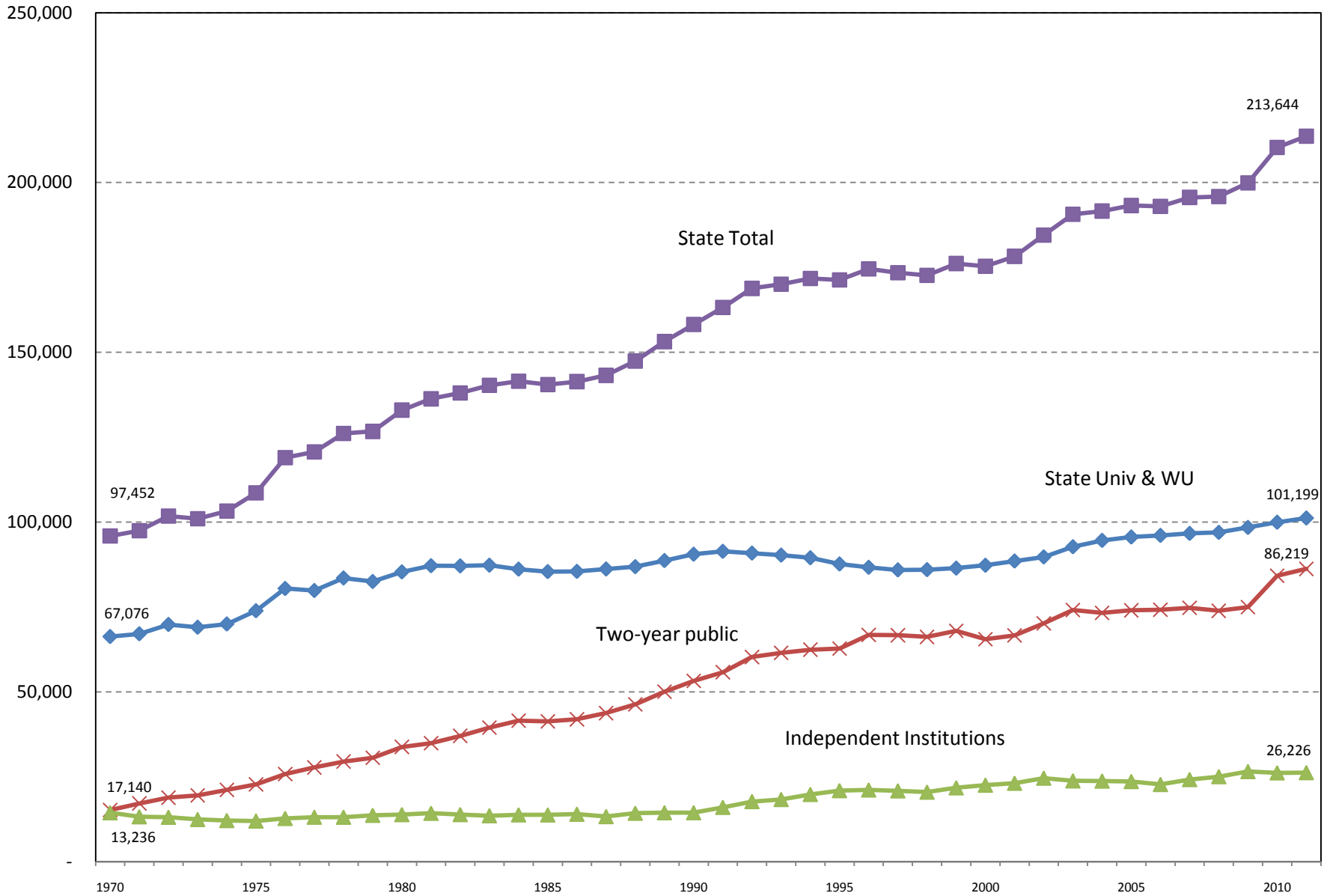
Excludes Technical Colleges, Ft Hays, Pittsburg State (All Yrs) and KSU (08, 09).

All Universities offer remedial Math; WU, WSU, ESU, KSU offer remedial English and/or Reading



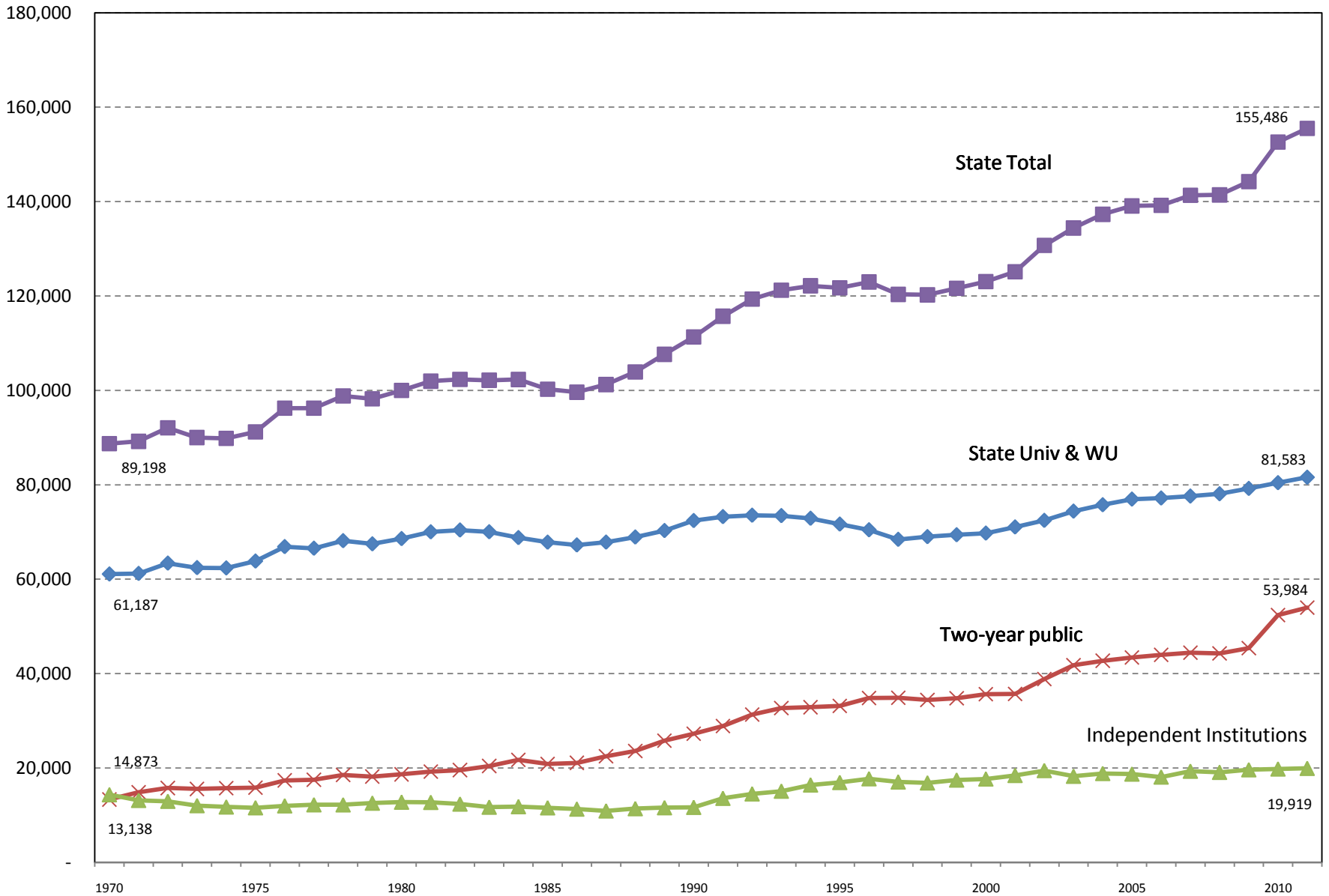
TRENDS AND COMPARISONS

KHEER Headcount by Sector, 1970 - 2010



Source: KHEER

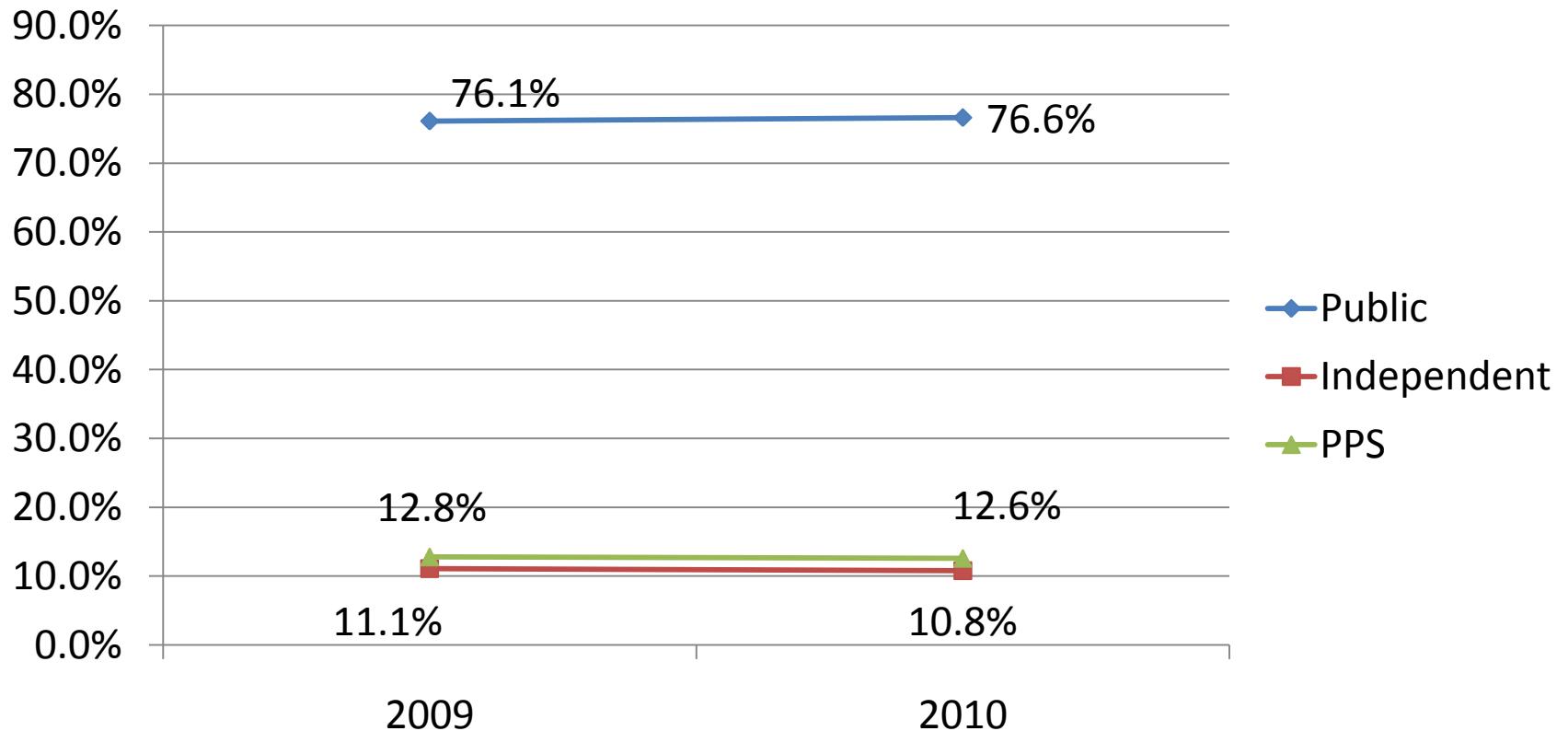
KHEER FTE by Sector, 1970 - 2010



Source: KHEER



Headcount Comparison Public, Independent, Private Postsecondary



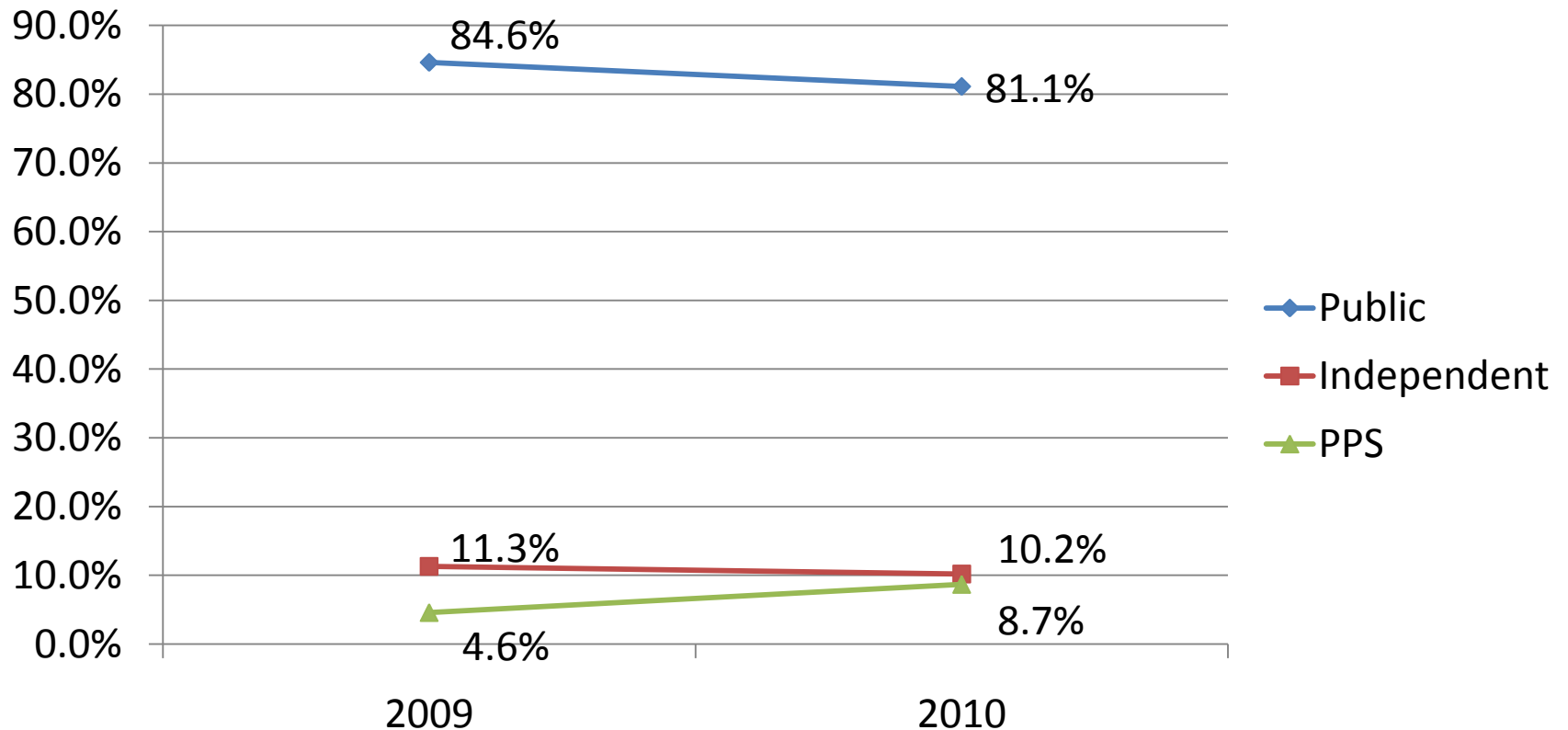
Source: KSPSD AY Collection, IPEDS, and PPS KBOR data collection

*Independent AY10 is an estimate only



Credit Hour Production

Public, Independent, Private Postsecondary



Source: KSPSD AY Collection, IPEDS, and PPS KBOR data collection



FUTURE REPORTING GOALS 3 YR PLAN



- ★ Annual Publication (Databook)
- ★ Standardization of Reports
- ★ Enhanced Research and Reporting Website
 - Public
 - Statewide
 - University
 - Researchers



- ★ Longitudinal Data System Reporting
- ★ New Data Collections
 - Private Postsecondary
 - Independents
 - Missouri
 - Assessment and Credential Agencies



Supporting Structure

- ★ \$9.1 million longitudinal data system grant
 - Enhance K-12 and Postsecondary data systems
 - K-12 through Postsecondary to Workforce
 - Migration of Students between Institutions
 - Migration of Students between State Borders