



# Highlights of System Enrollments

Cynthia Farrier  
Director of Data, Research and Planning

March 23, 2016

kansasregents.org => Data => System Data => Enrollment  
Reports

★ LEADING HIGHER EDUCATION ★

- Packet Includes:
  - Highlights
  - Annual Enrollment Slide Deck
- More Information:
  - kansasregents.org => Data => Kansas Higher Education Reporting System (Interactive)
  - kansasregents.org => Data => System Data => Higher Education Data Books (Static)

### Today's Focus:

- Quick Facts and Current State
- Noteworthy Trends
- Factors Influencing Enrollment
- Opportunities for Research or Discussion

# Quick Facts

- Public Sector

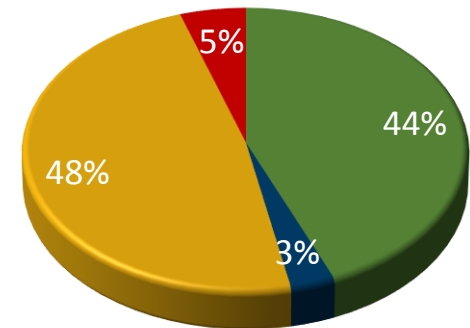
- Headcount = 250K (249,976)
- FTE = 140K (140,427)

- Sector Split

- 4 Year = 47% of HC (117,196)
- 2 Year = 53% of HC (132,780)

- Other Sectors

- Private & Out-of-State Institutions = 36,550 (AY 2014)
- Independent Enrollment = 33,849 (AY 2014)



- State Universities
- Municipal University
- Community Colleges
- Technical Colleges

# Quick Facts

- Undergraduate = 88.7% (221,677)
- Residents = 78.7% (196,614)
- Part-Time = 63.5% (82% at CC, 76% at TC)
- Gender = 54% Female, Down 2% Since 2008
- Culturally Diverse = 27.9%
- 25+ Years of Age = 36.3%

# Overall

- Overall Public System 5-Yr Trending Down 3.2% - Was Anticipated
- Almost Exactly Equivalent to Pre-Recession Levels In:
  - Headcount
  - FTE
  - Balance Between Sectors
    - HC AY2009 and AY2015 (47% for 4-Yr, 53% for 2-Yr)
    - 1.5% shift in make-up during recession

# Noteworthy Trends

- State Universities
  - Moderate to Slow Growth in FTE
    - 6.6% since 2008, slowed to 0.9%
  - Non-Resident Enrollments for State Universities
    - Increased by 3.7% since 2012
- Community College
  - 5-Yr Enrollment Decline 8.3%, Not as Low as 2008
  - FTE Above 2009
  - Ages 20-24 5-Yr Change -5.5% (TC up by 99 HC)
  - Ages 25-44 5-Yr Change -16.2% (TC up by 87 HC)
  - Decline in First Time Entering Students for Ages 20+ (Pre-Recession Levels)
  - Deliver 75% of Non-High School Technical Education

# Noteworthy Trends

- Technical Colleges
  - 5 Year Trends:
    - Aggressive Growth in HC, Up 28.3%
    - Increased 3.7% in Ages 20-24
    - Decreased 4.6% in Ages 25+
    - Increased 122% in Ages 19 and under
  - FTE 20.6% 5-Yr Growth but Flattening Out
  - Moving of Tiered Courses to Non-Tier
  - Compliance with Faculty Credentialing

# Key Factors That Influence Enrollment

- Mission
- Economy
- Population/High School Graduates/College Going Rate
- Non-Resident Enrollment
- Selectivity and Academic Preparedness
- Prestige (Academics, Research, Talent, Athletics)
- Pricing and Affordability
- Capacity
- Transferability and Non-Traditional Offerings
- Retention and Graduation
- Academic Support Services
- External Factors



# Population/High School Graduates/College Going Rate

- Kansas High Schools Graduates to Public Postsecondary=54.7%
- ≈ 10% Enter Private or Out-of-State
- ≈ 10% Dually Enrolled and May Enter Workforce Directly
- ≈ 12% Enter Within Next 5 – 7 Years (5% in 2<sup>nd</sup>)
- Three Models Predict Growth... Caution...
  - WICHE Model Fairly Aggressive
- Others Project **Conservative Estimates**
  - 5 Year Population Growth (Ages 15-19) = 4% then Taper Off. (CEDR)
  - 5 Year HS Graduation Growth = 3%, then Slows (IES)
- Kansas and Surrounding Markets Fairly Saturated



# Transferability and Distance Learning

- 7.5% Attend Multiple Institutions During the Same Year
- 69% of Bachelor Degree Recipients Attend Multiple Institutions
- 48% Take at Least 1 Distance Education Class
- 46% Take at Least One Online Course

# Dual Enrollments (PS and HS)

- Four Year Sector:
- More than 1,500 Enrolled
- Down 17.1% from 2010, Down 42.5% from 2013 peak
- 4% of Credit Hour Production
- Two Year Sector:
- More than 24,000 Enrolled
- Up 40.8% from 2010, “Excel” 1<sup>st</sup> Year AY2013
- 96% of Credit Hour Production
- Nearly 43% of 2-Yr (10,275) from Governor’s “Excel in Technical Education”

# Enrollment Balance

- Good Balance in System Portfolio Based on Mission
- Smooths Overall Fluctuations During Economic Shifts
- Targeted Marketing - Diverse Populations and Adults – Ensure Support Services
- Non-Resident, Honors, International
- Strategy to Increase Enrollment Alone Inverse to Attainment and Graduation
- Focus on What Each Institution Does Best

# Retention and Graduation

- **What are the demographics of stop outs?**
- Only 11% of Low Income Students Graduate in 6 Years (Pell Institute)
- Kansas Public University Retention
  - 12% Attrition First to Second Year
  - 33% Attrition First to Fourth Year
  - Asian Students Most Likely to Make it to Fourth Year, White Students Second Most Likely
  - African American Least Likely: Kansas has experienced some gains

# Retention and Graduation

- 15 to Finish –
  - Minimum Bachelor Degree=120 Hours (Kansas)
  - 26% More Students Taking 15 Credits (Hawaii)
  - Successful for Shortening Graduation for Those Likely to Graduate
  - Little Effect on Retention
  - 2 National Proposals
    - Pell Accelerated Completion (Summer)
    - On Track Pell Bonus (\$300 for 15)
  - KS 4-Yr Median Hours=24

# Academic Supports

- First Generation, Minorities, Low Income
  - Students Who Take Part in Mentoring and Coaching 10-15% More Likely to Advance to Another Year
  - Saw 4% Increase in Graduation Rates
  - (Bettinger Study)
- Inclusivity, Mind-set, Social Belonging, “Grit”
- Too Many Choices for Students

# Opportunities

- College Remediation Busters
  - Math Transitions
- Targeting of Underprepared Students
  - 28.3% Enroll in Developmental Courses First Year
- *Of Total Entering Class Who Don't Pass Developmental Courses*
  - 4% at State Universities
  - 14% at Community Colleges



# Opportunities

- Remove Barriers
  - Transfer Articulation
  - Credit for Prior Learning *that counts*
- Willingness to Compete, Flexibility, Online
- Partnerships and Articulation Agreements
- One Size May Not Fit All

# Questions?

- Teaser for the Day:
- Preliminarily 7-10% of Bachelor and Post Bachelor Graduates Work in Missouri
- How can we help you with follow-up or research?



# System Enrollments

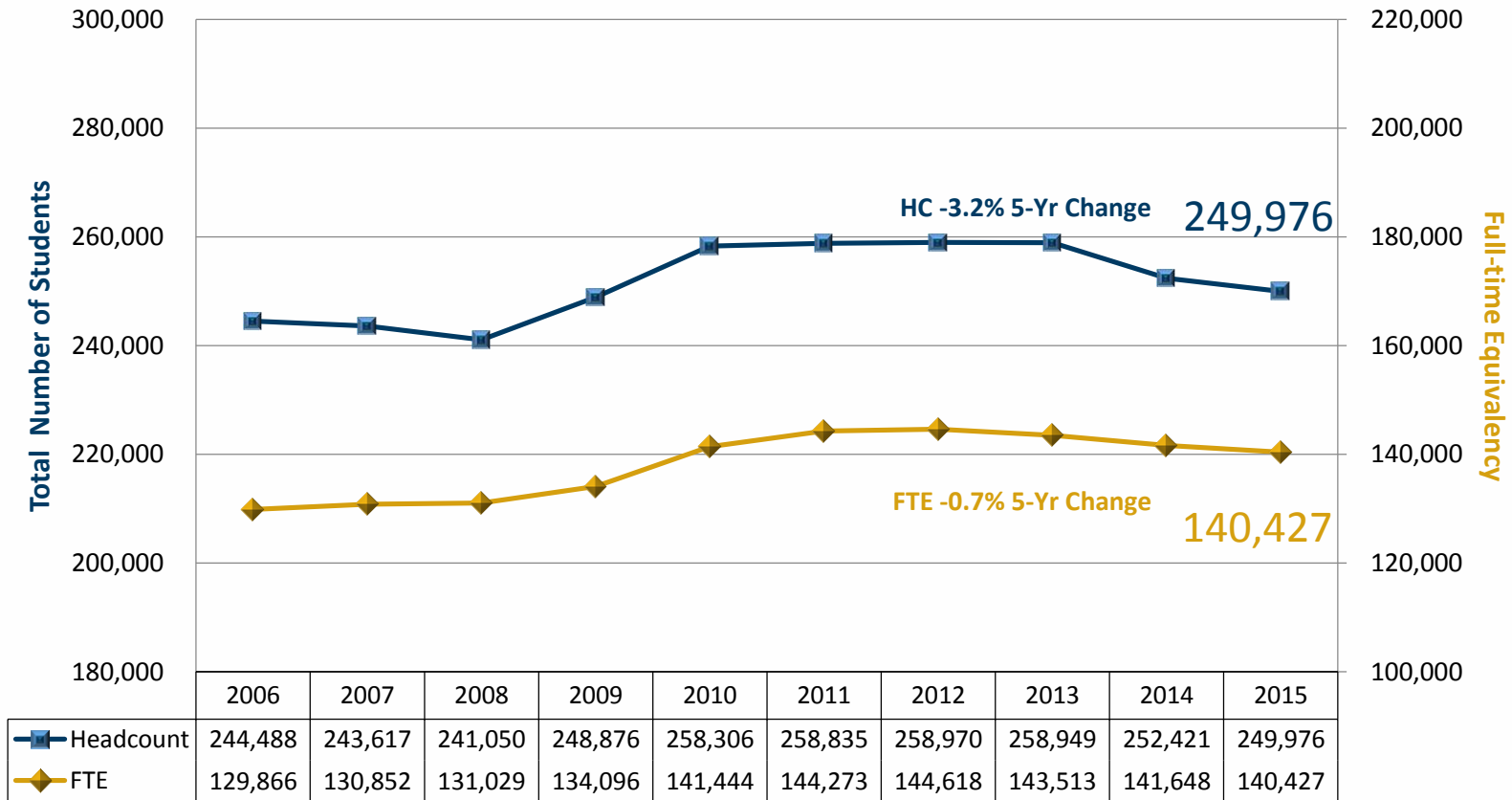
Cynthia Farrier  
Director of Data, Research and Planning

★ LEADING HIGHER EDUCATION ★

# ACADEMIC YEAR AND FALL ENROLLMENT TRENDS

# Enrollment Academic Year

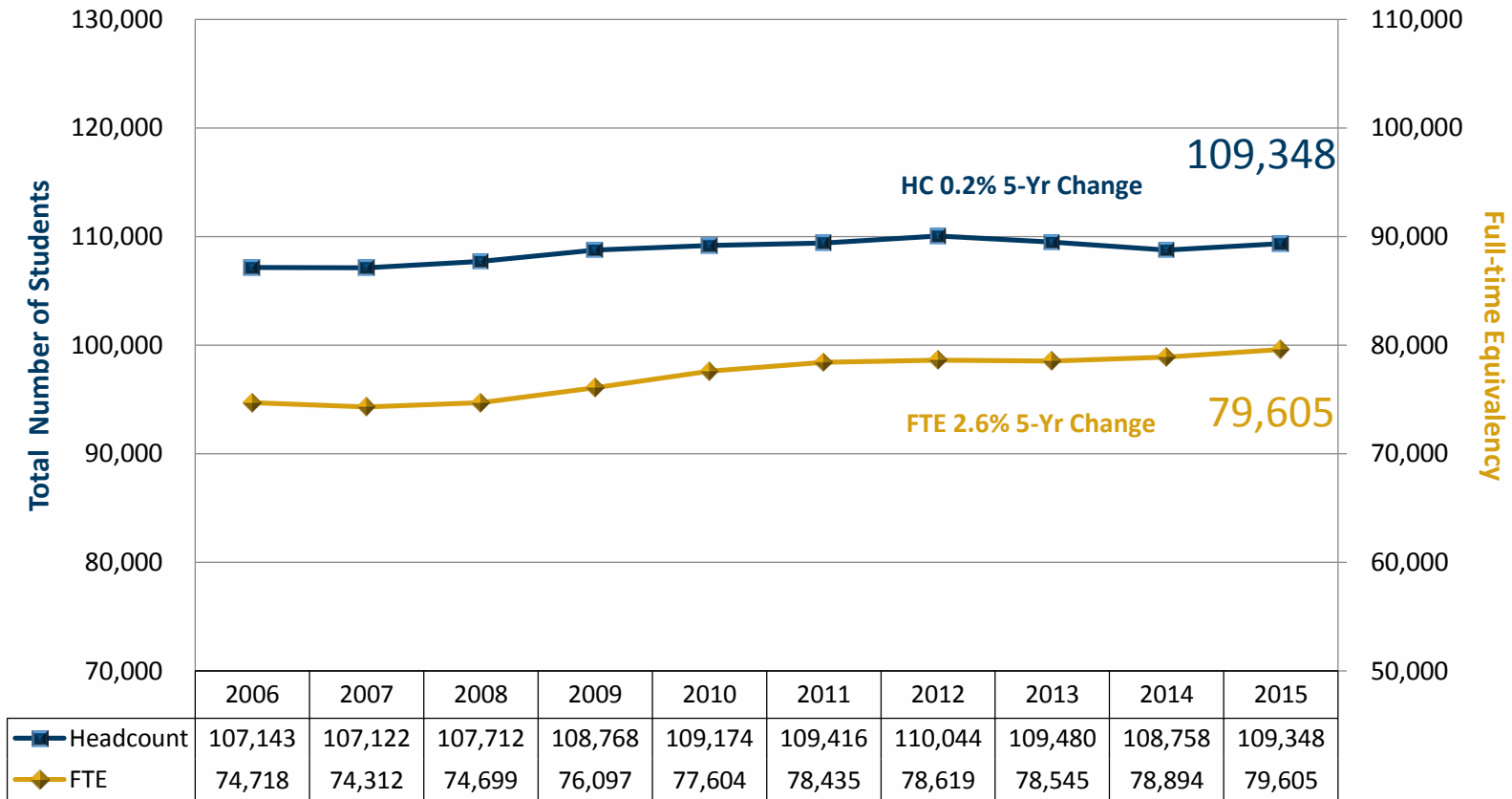
## Systemwide, Public



Source: KHEDS Academic Year Collection

# Enrollment Academic Year

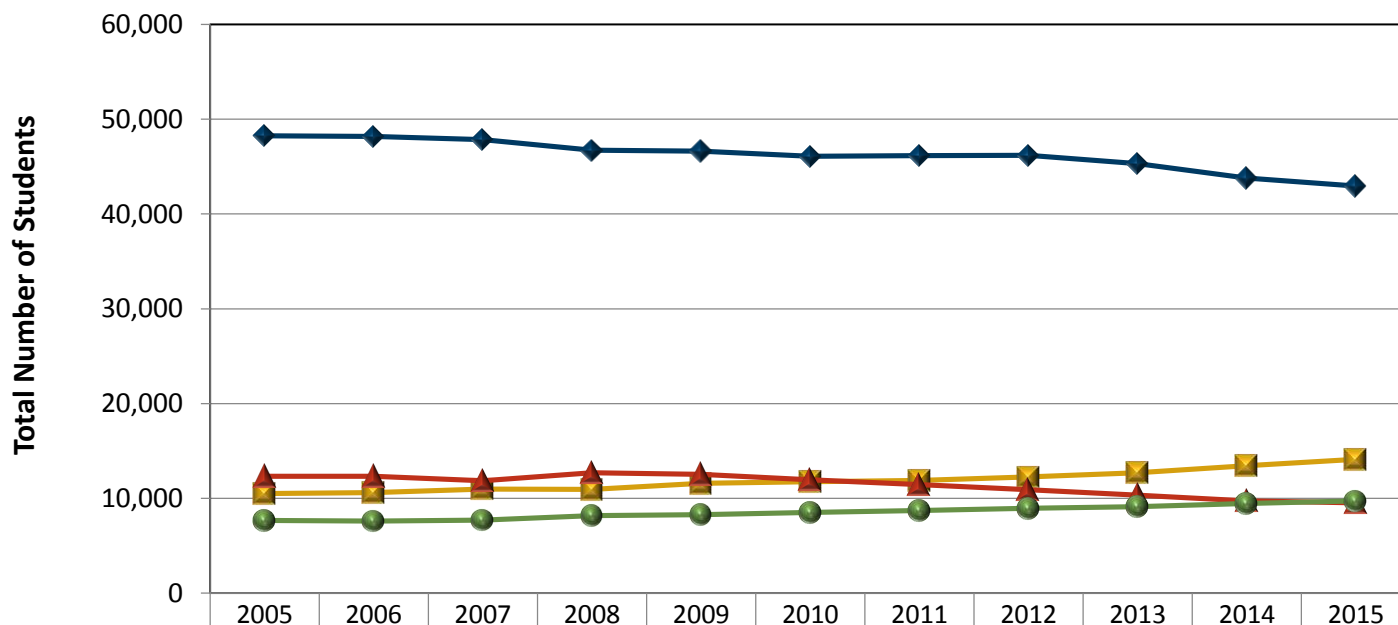
## State Universities



Source: KHEDS Academic Year Collection

# Enrollment by Residency

## State Universities - Research

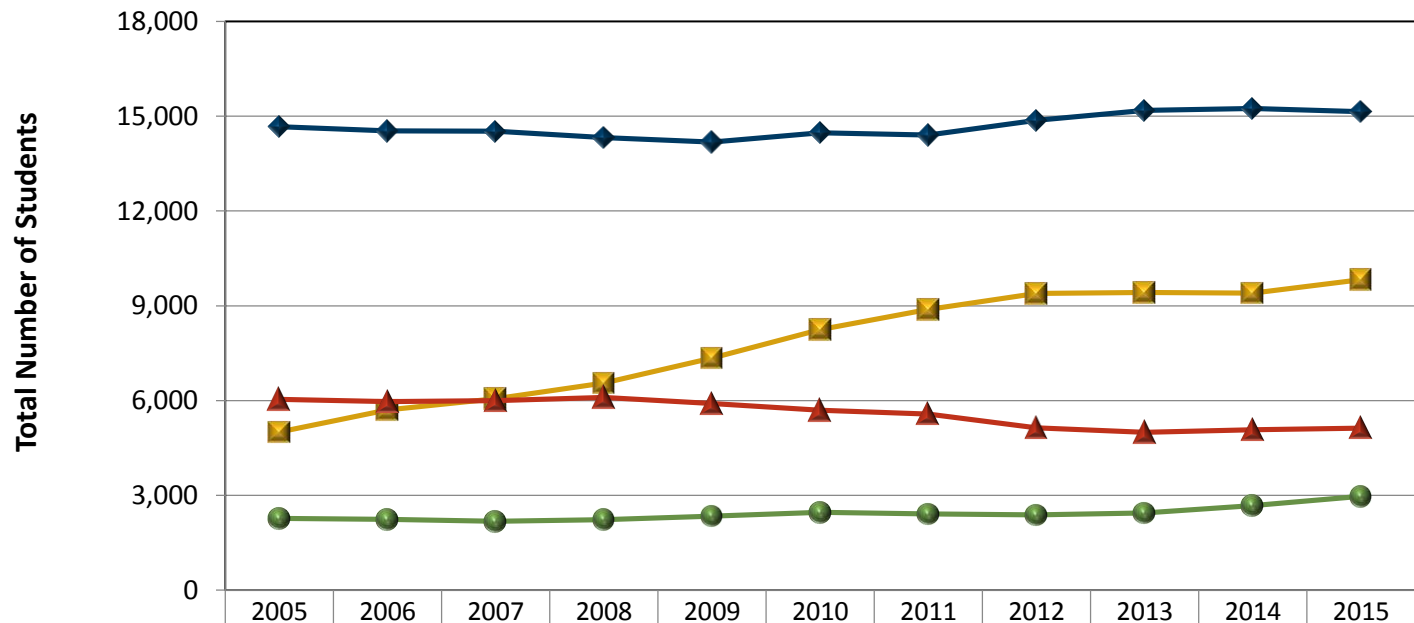


	2005	2006	2007	2008	2009	2010	2011	2012	2013	2014	2015
Undergrad Resident	48,253	48,204	47,863	46,738	46,637	46,104	46,152	46,188	45,315	43,783	42,965
Undergrad Non-Resident	10,489	10,595	10,959	10,932	11,588	11,736	11,876	12,257	12,675	13,414	14,100
Graduate Resident	12,321	12,306	11,829	12,697	12,508	11,958	11,428	10,897	10,325	9,728	9,525
Graduate Non-Resident	7,669	7,602	7,700	8,150	8,275	8,493	8,689	8,922	9,113	9,439	9,698

Source: KHEDS Academic Year Collection

# Enrollment by Residency

## State Universities - Regional



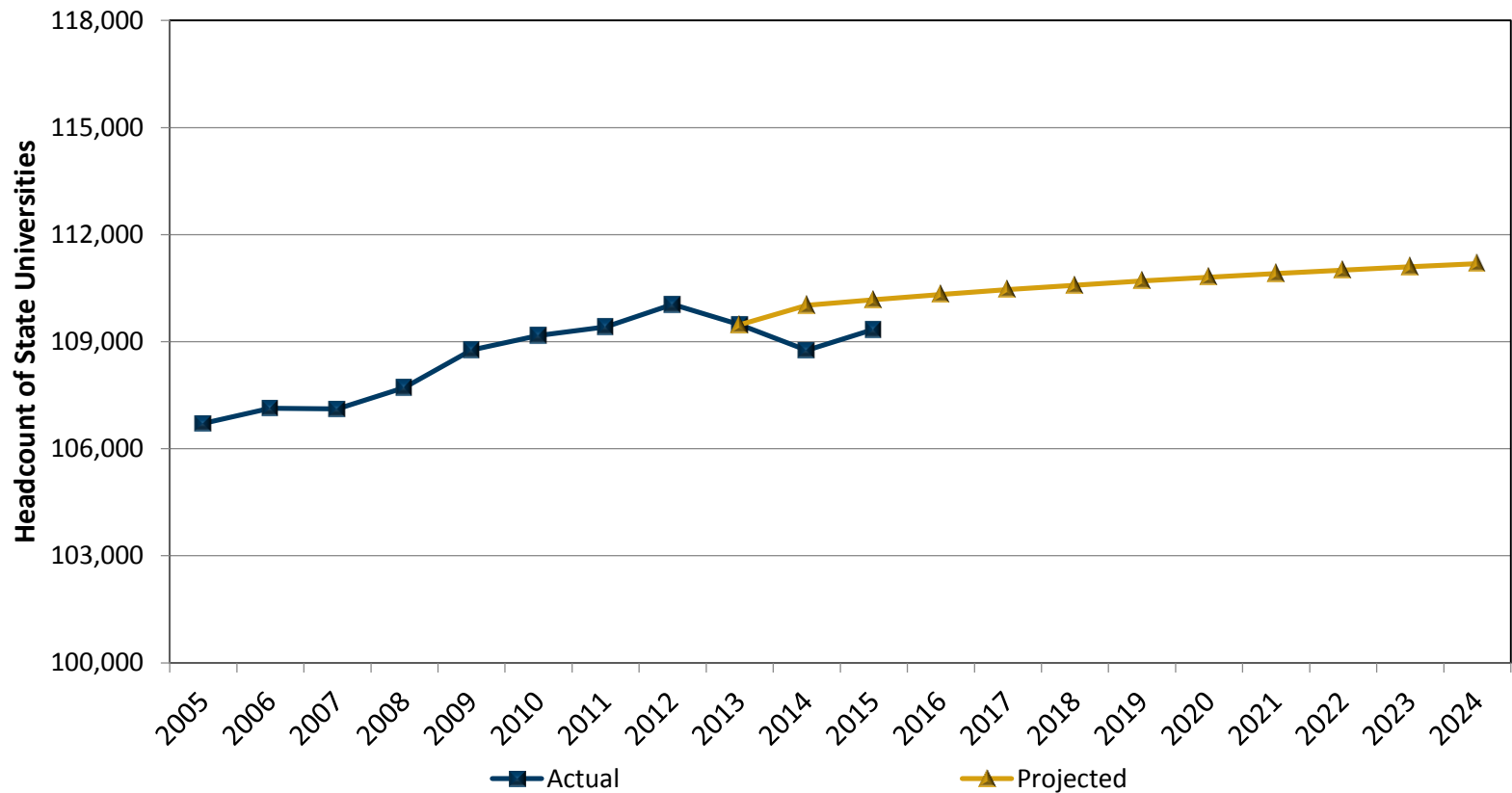
Undergrad Resident	14,674	14,534	14,533	14,321	14,183	14,482	14,407	14,876	15,192	15,245	15,148
Undergrad Non-Resident	5,003	5,700	6,061	6,550	7,341	8,246	8,887	9,393	9,424	9,404	9,828
Graduate Resident	6,037	5,963	5,996	6,097	5,902	5,696	5,574	5,132	4,996	5,072	5,121
Graduate Non-Resident	2,261	2,232	2,174	2,228	2,334	2,459	2,403	2,379	2,441	2,673	2,963

Source: KHEDS Academic Year Collection



# Enrollment Projections

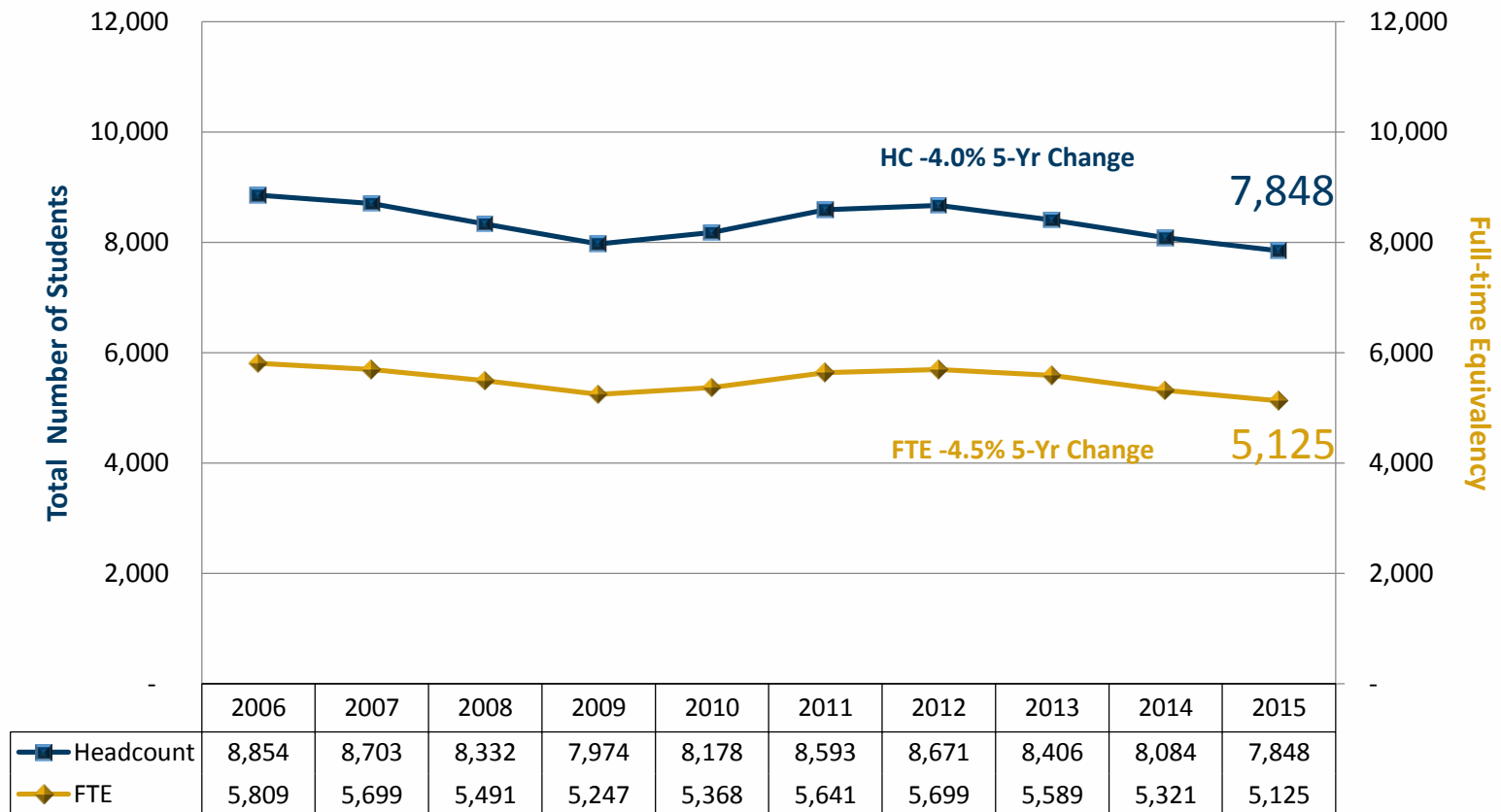
## State Universities



Source: KHEDS Academic Year Collection

# Enrollment Academic Year

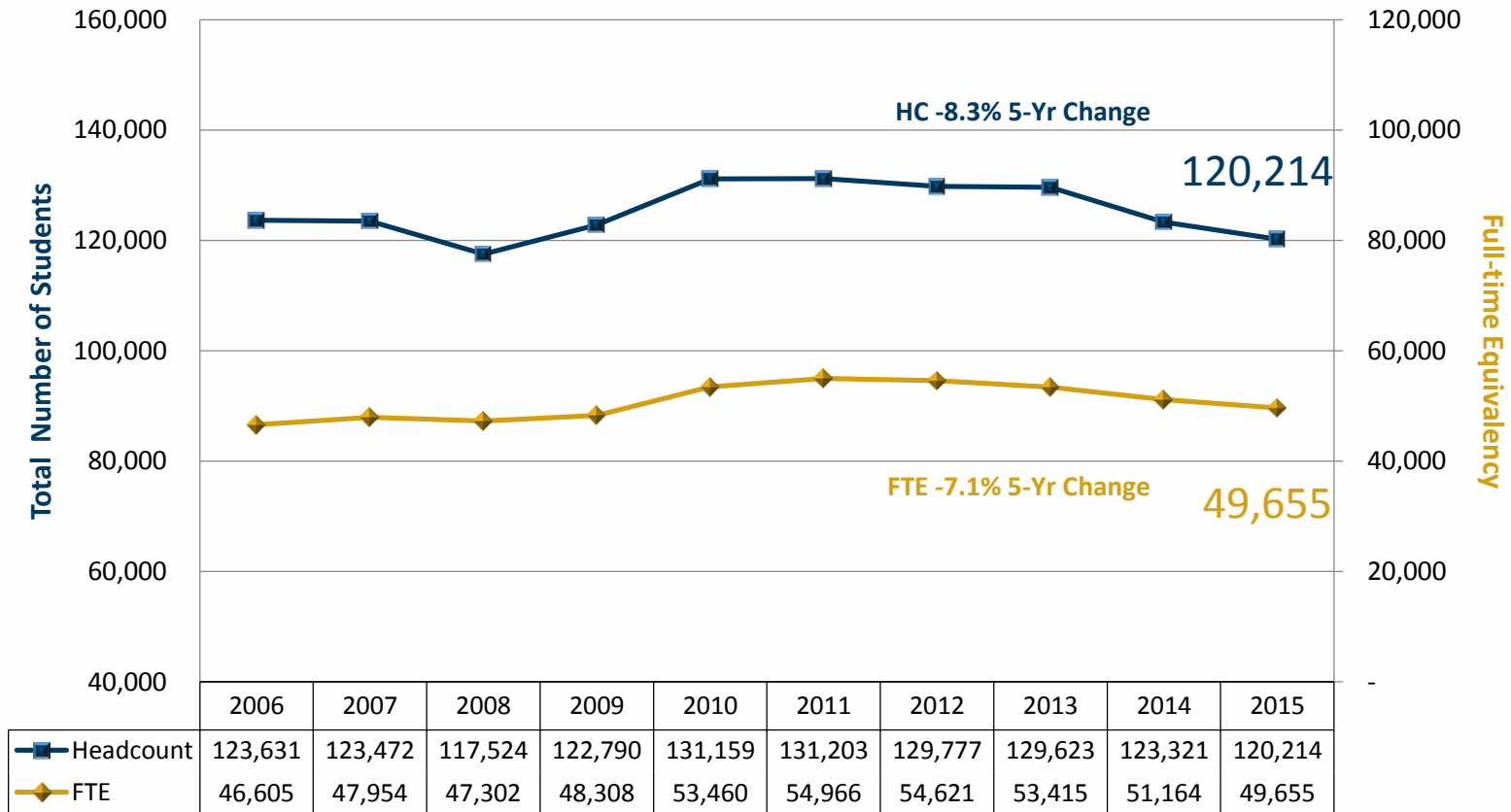
## Municipal University



Source: KHEDS Academic Year Collection

# Enrollment Academic Year

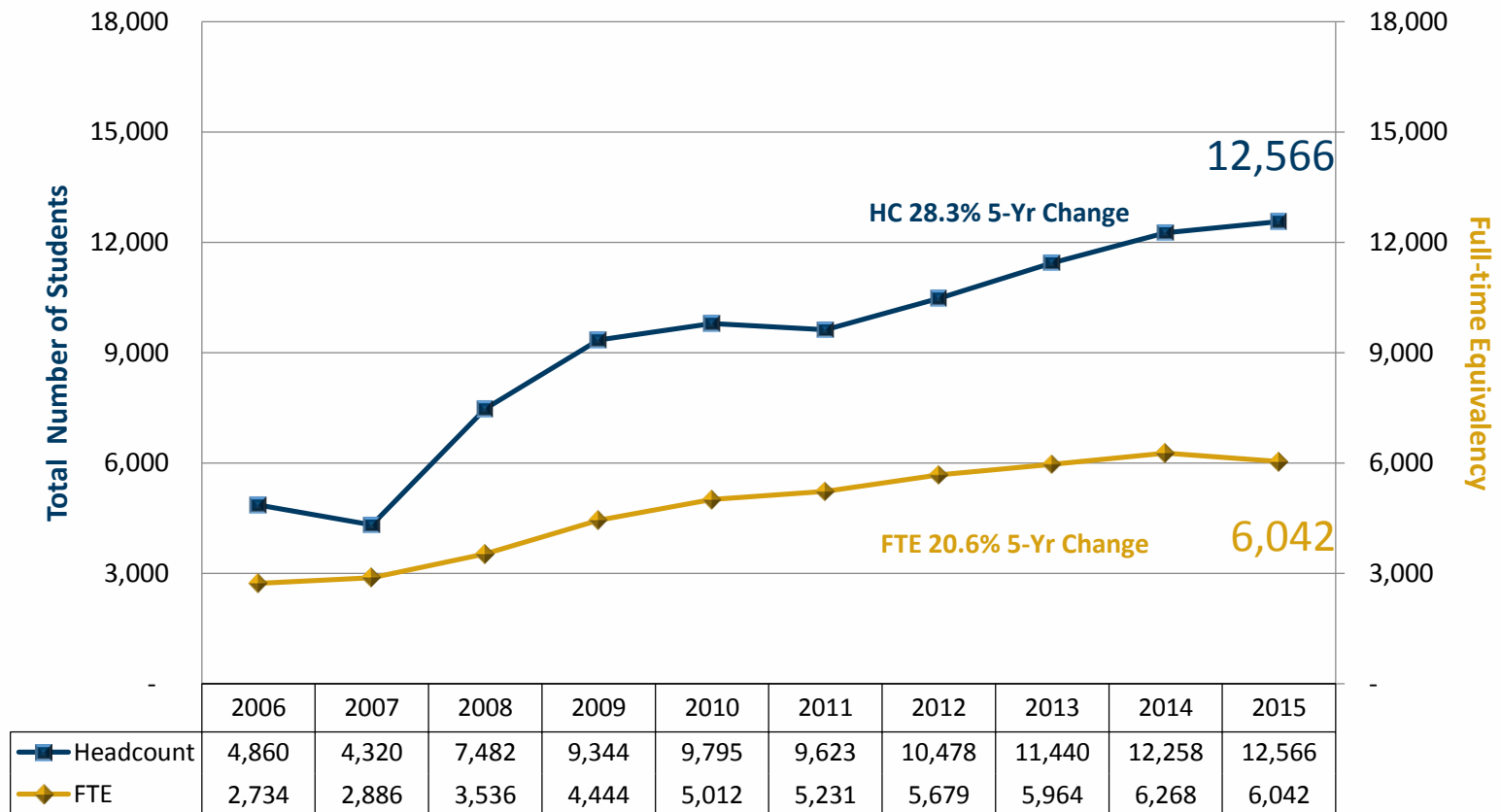
## Community Colleges



Source: KHEDS Academic Year Collection

# Enrollment Academic Year

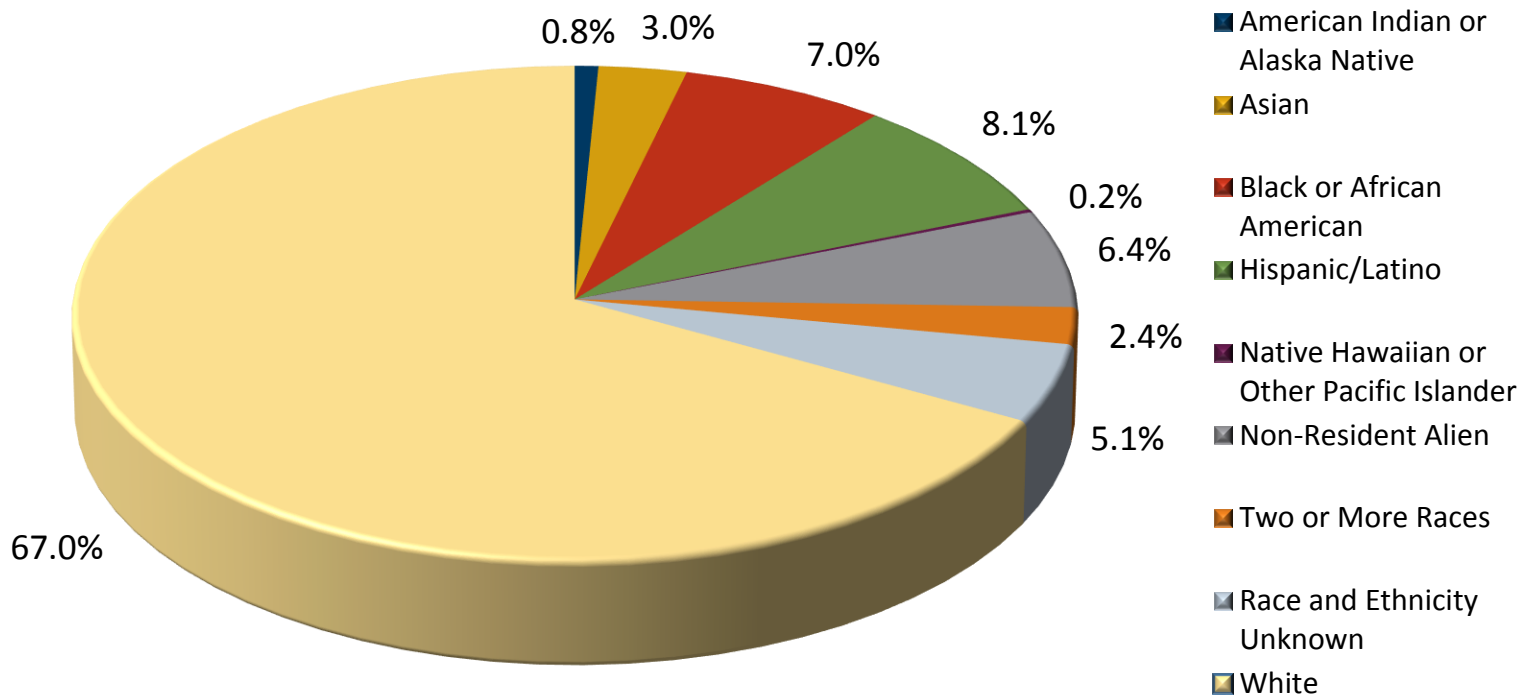
## Technical Colleges



Source: KHEDS Academic Year Collection

# Enrollment Academic Year

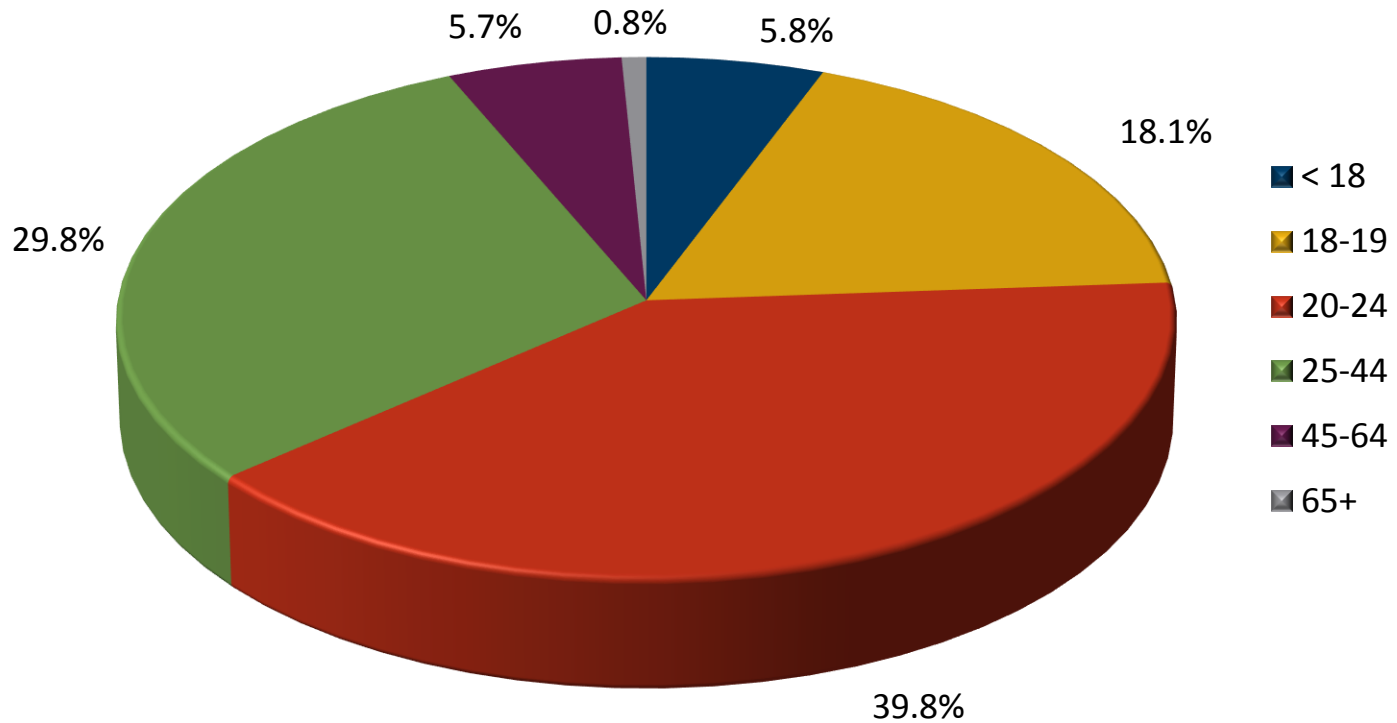
Systemwide Enrollment Percent by Race/Ethnicity



Source: KHEDS 2015 Academic Year Collection

# Enrollment Academic Year

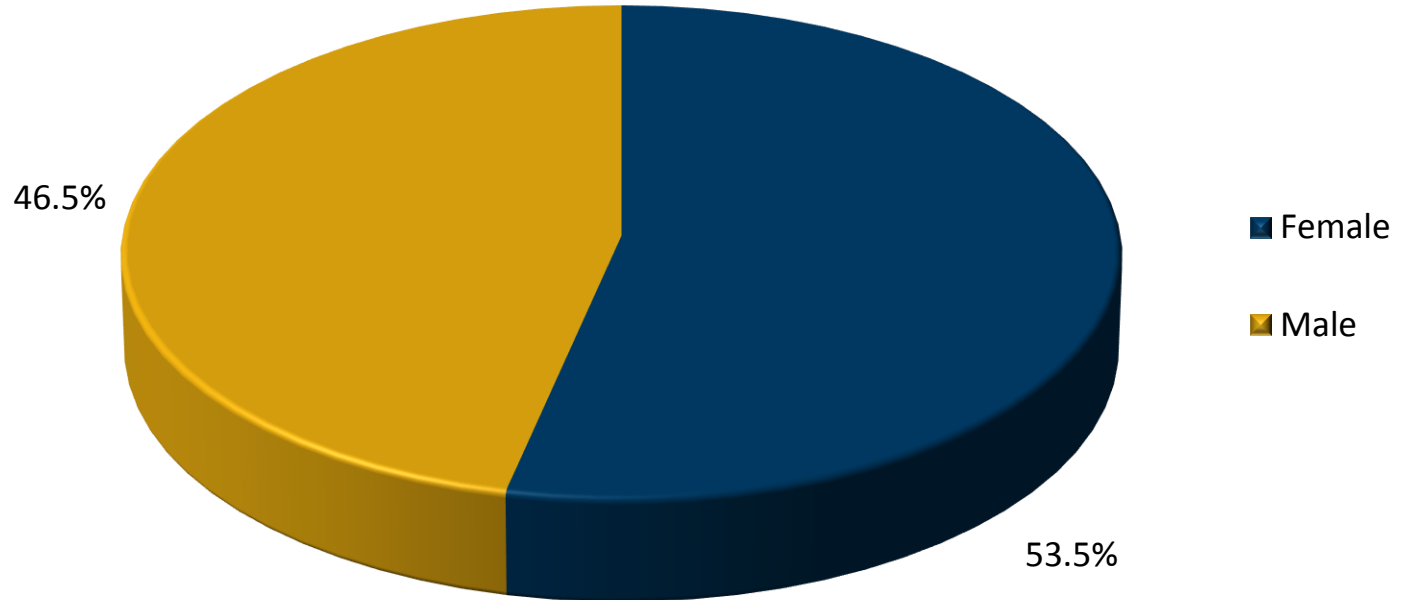
Systemwide Enrollment Percent by Age Group



Source: KHEDS 2015 Academic Year Collection

# Enrollment Academic Year

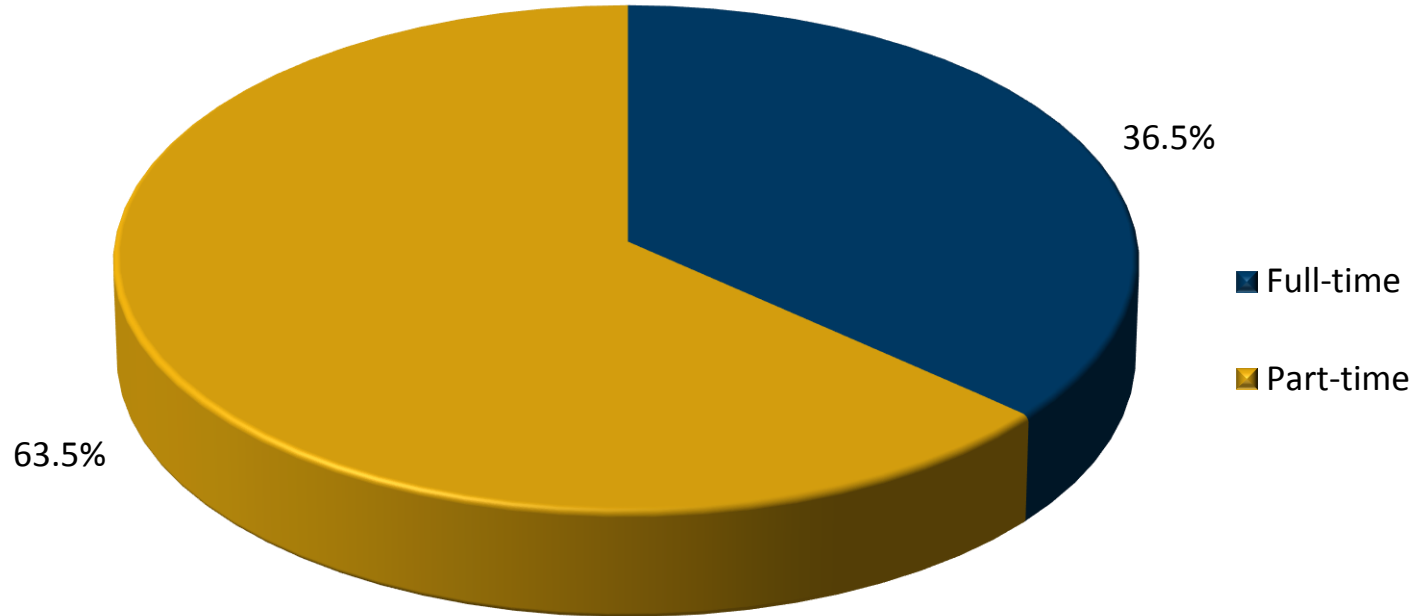
Systemwide Enrollment Percent by Gender



Source: KHEDS 2015 Academic Year Collection

# Enrollment Academic Year

**Systemwide Enrollment Percent  
by Full-time/Part-time Enrollment**

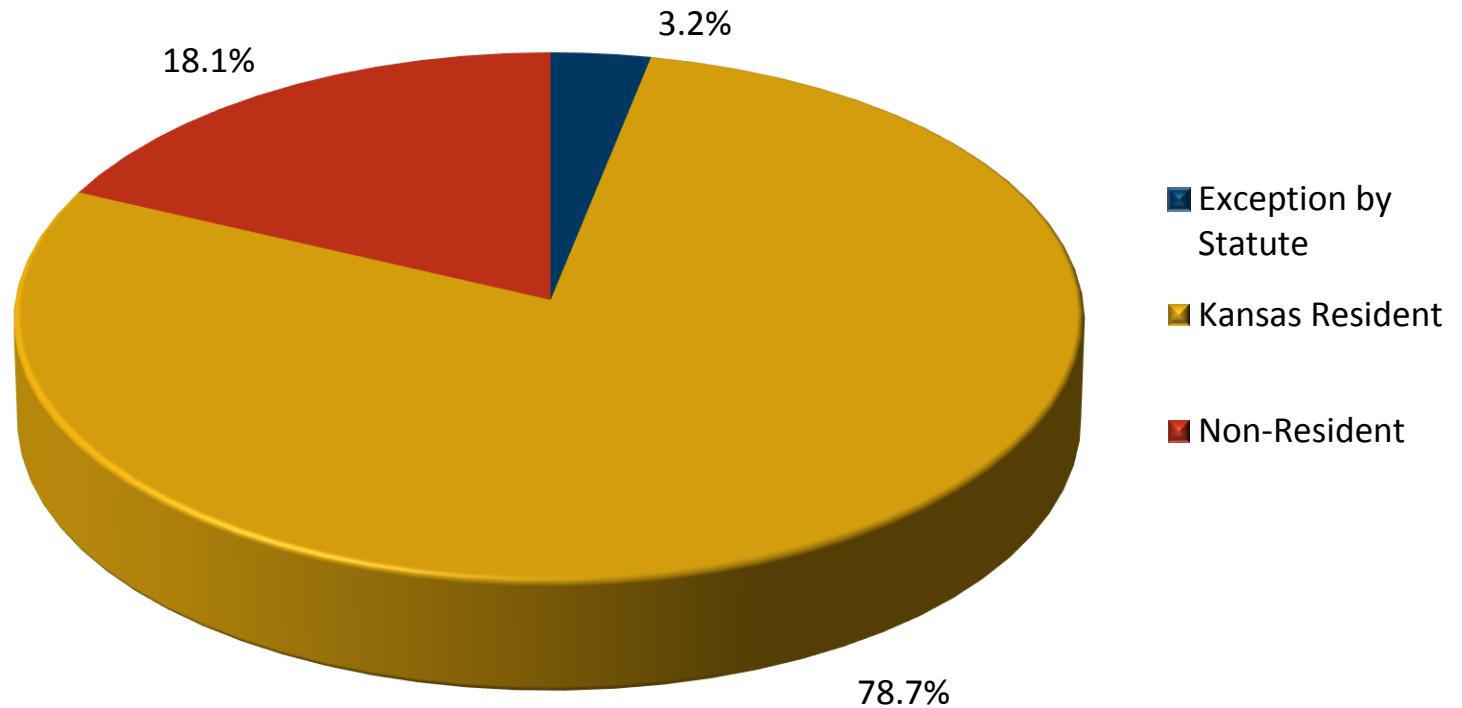


*Source: KHEDS 2015 Academic Year Collection*



# Enrollment Academic Year

## Systemwide Enrollment Percent by Residency Status

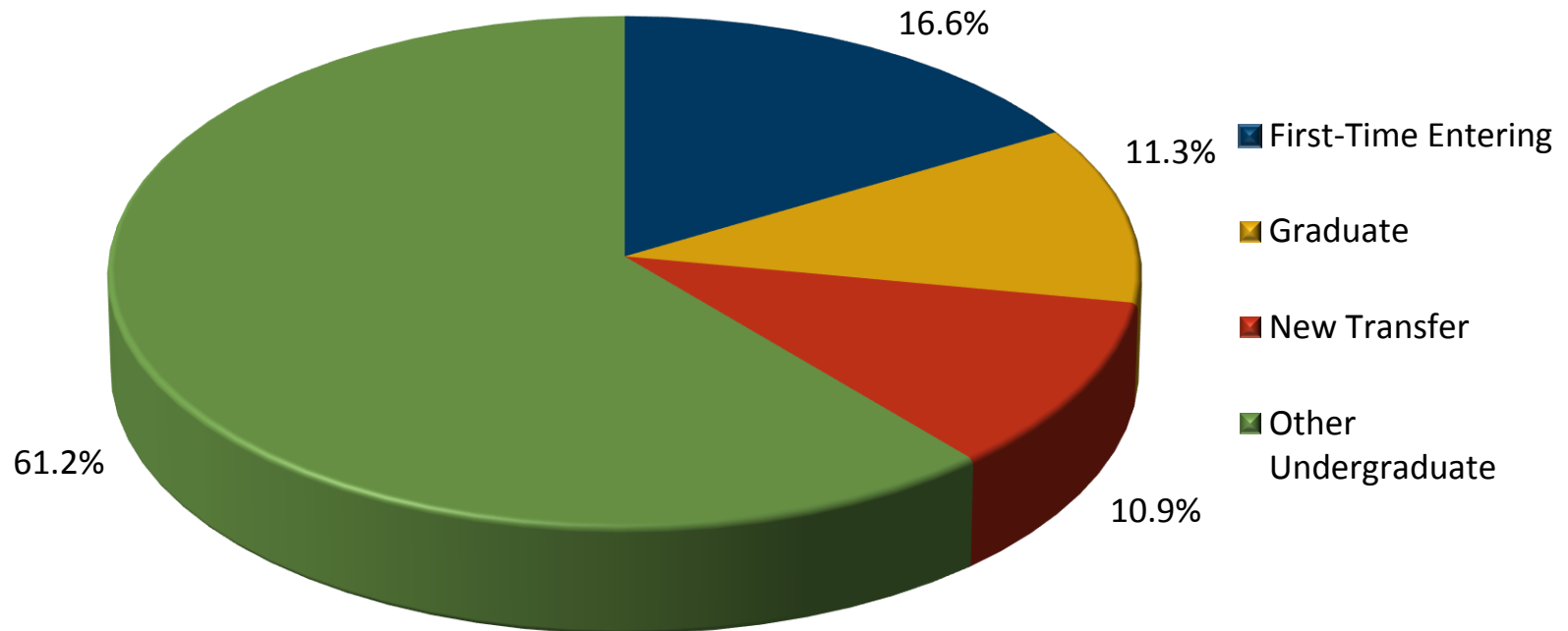


Source: KHEDS 2015 Academic Year Collection

*\*Some examples of exception by statute (non-inclusive): Employees of a state educational institution, Spouse of military serviceman transferred to another state, recruited for full-time employment in Kansas (economy)*

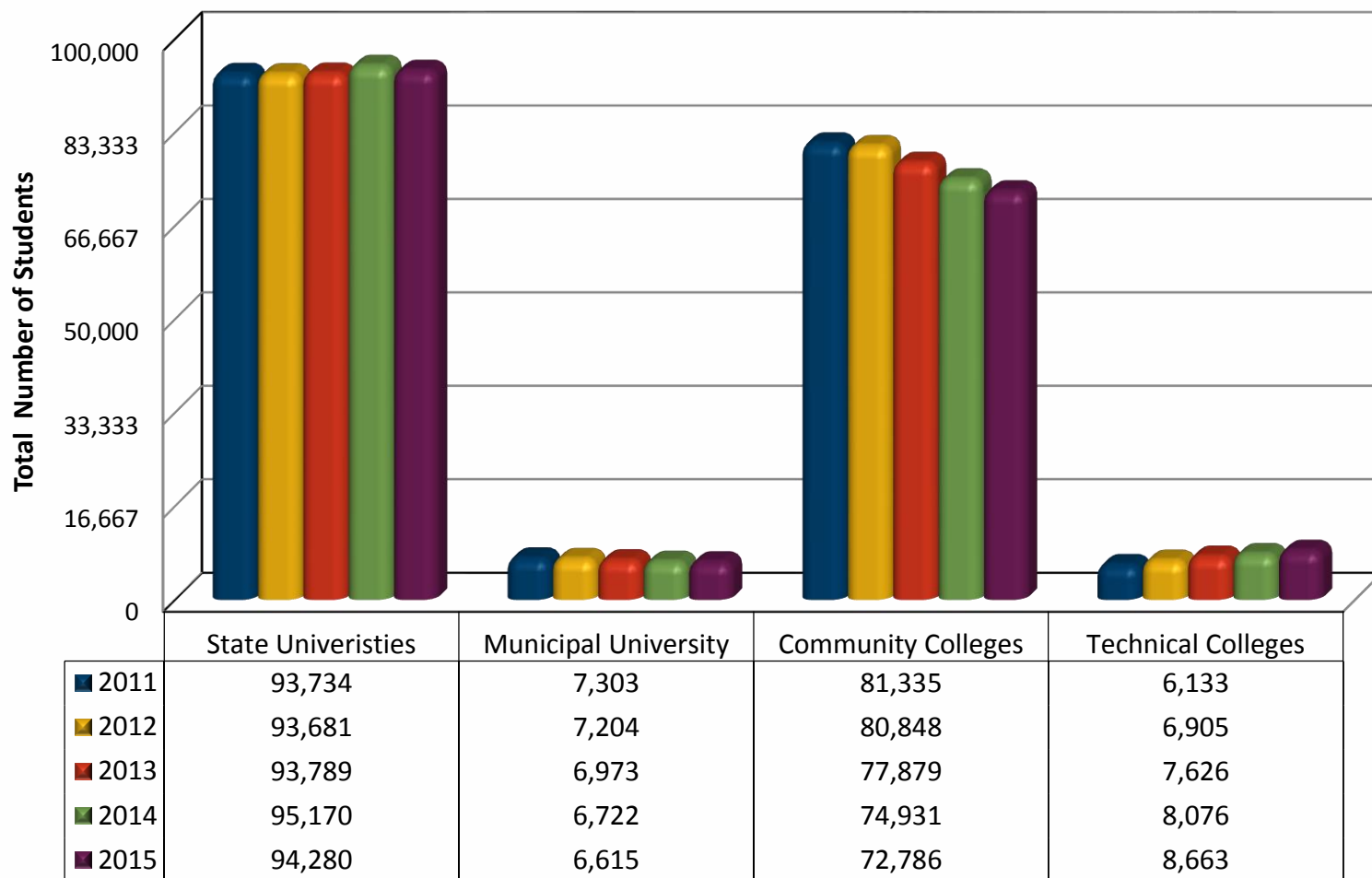
# Enrollment Academic Year

**Systemwide Enrollment Percent by Student Type**



Source: KHEDS 2015 Academic Year Collection

# Fall Enrollment Trends

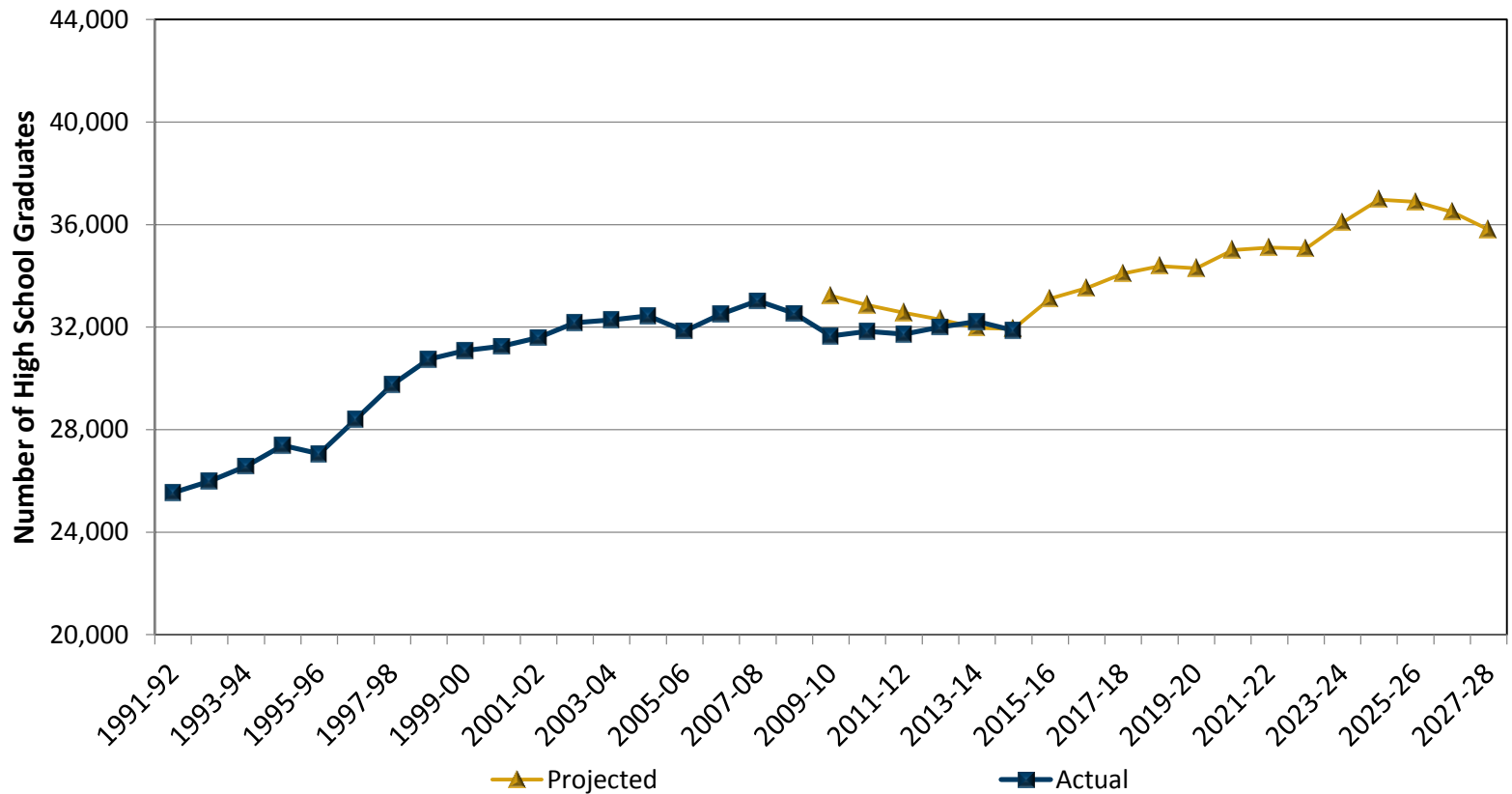


Source: Fall KHEER Collection

# CHARACTERISTICS OF ENTERING STUDENTS

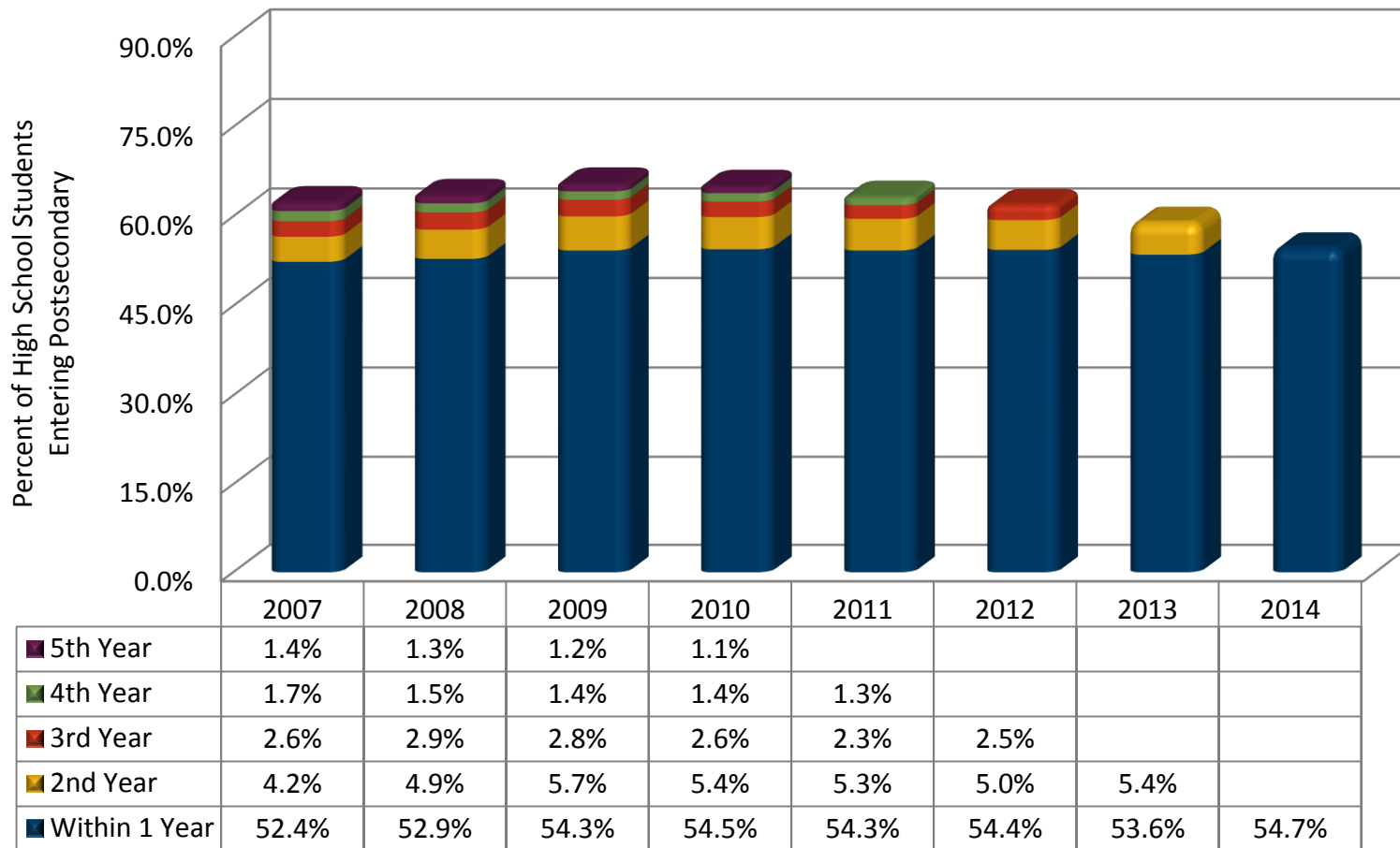
# High School Graduates

## Kansas



Source: Western Interstate Commission for Higher Education, *Knocking at the College Door: Projections of High School Graduates*, 2012 report. KSDE State Graduation Rate – Four year Adjusted Cohort.

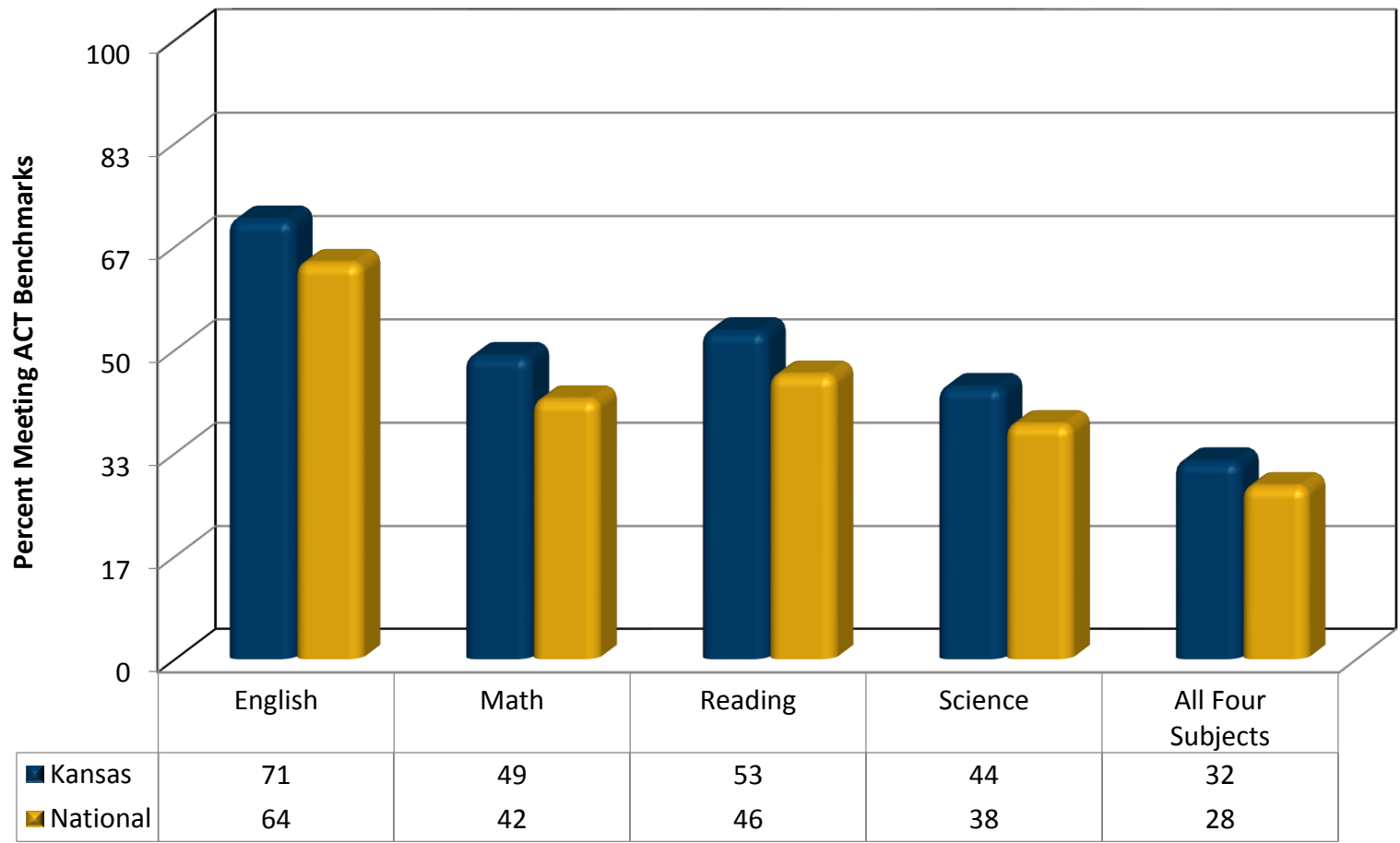
# College Going Rates



Source: P20 Data System

Definitions: \*Unduplicated Number of Kansas High School Graduates Entering Kansas Public Postsecondary as Degree Seeking.

# College Readiness By Subject



Source: ACT Kansas State Profile Report 2015 – Graduating Class Tested High School Graduates Meeting Benchmarks

# Developmental Education

## Percent of Students Enrolled in Developmental Education

Sector	Math, English, or Reading	Math	English/ Reading
State Universities	14.9%	12.9%	3.2%
Community Colleges	38.3%	31.2%	18.7%
Unduplicated	28.3%	23.5%	12.0%

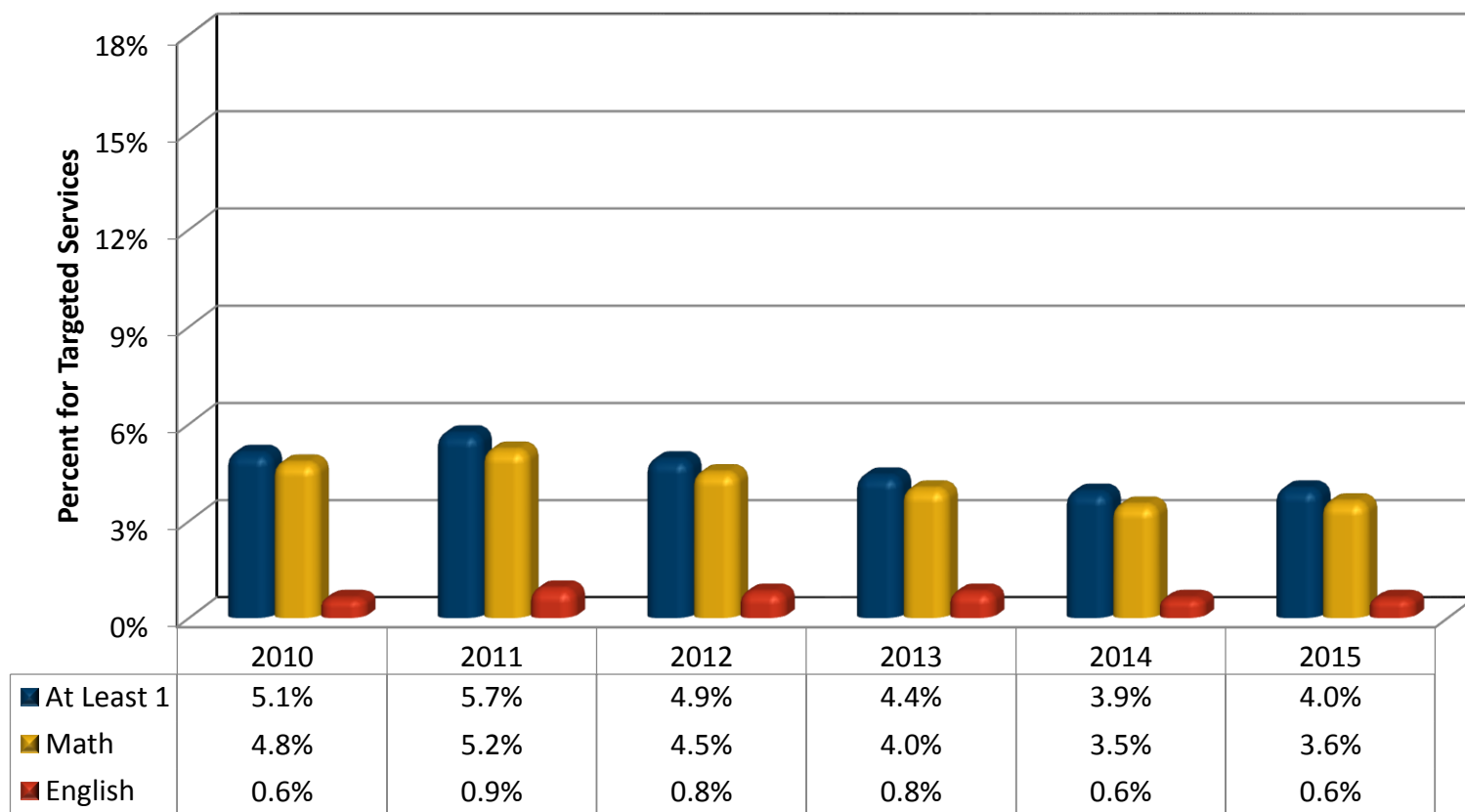
Source: P20 Data System and KHEDS Academic Year Collection  
2014 High School Graduates, First Time, Degree-Seeking, Academic Year following High School Graduation



# Developmental Education

## Percent for Targeted Services

### State Universities

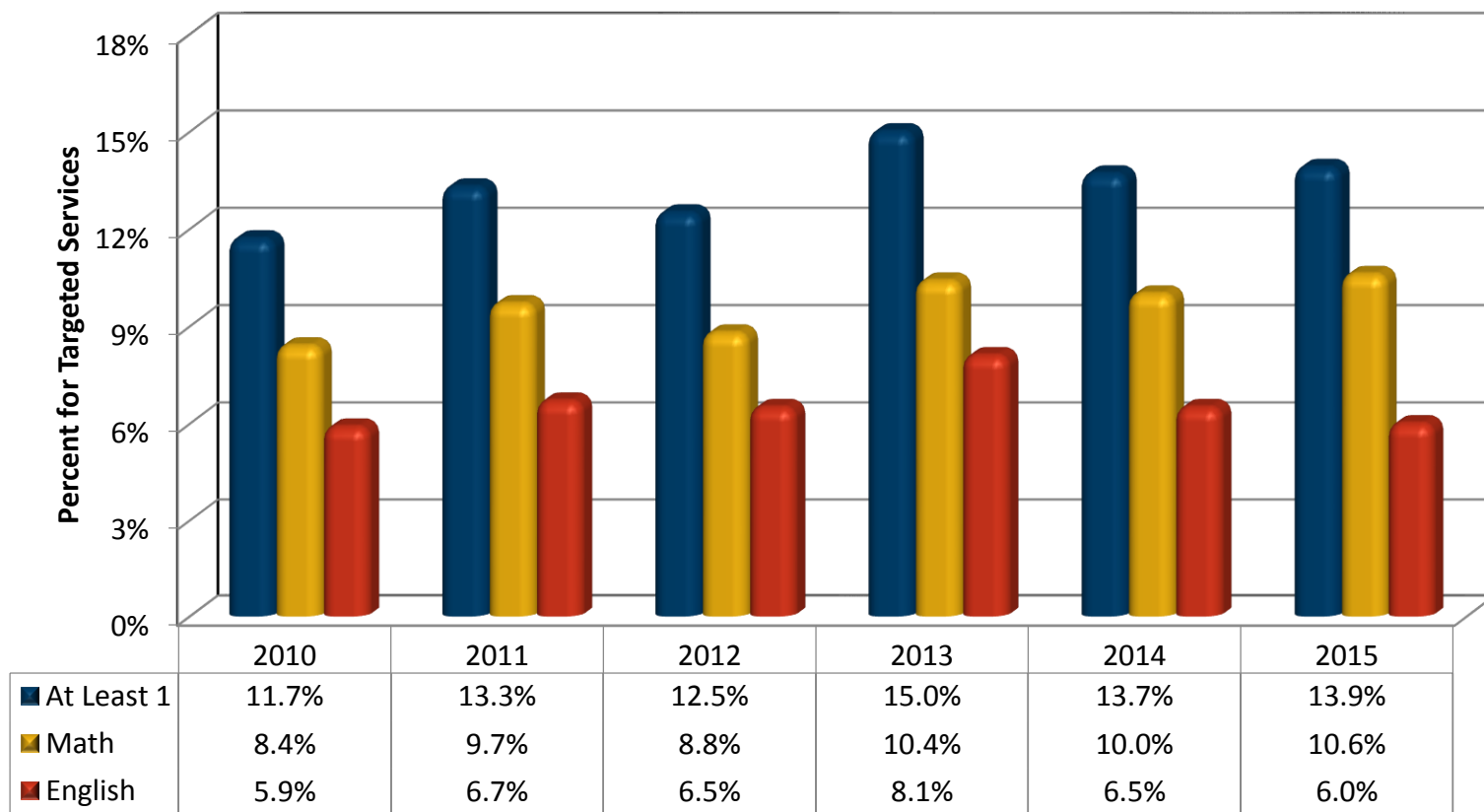


Source: P20 Data System and KHEDS Academic Year Collection, percent of total class failing developmental education courses.

# Developmental Education

## Percent for Targeted Services

### Community Colleges

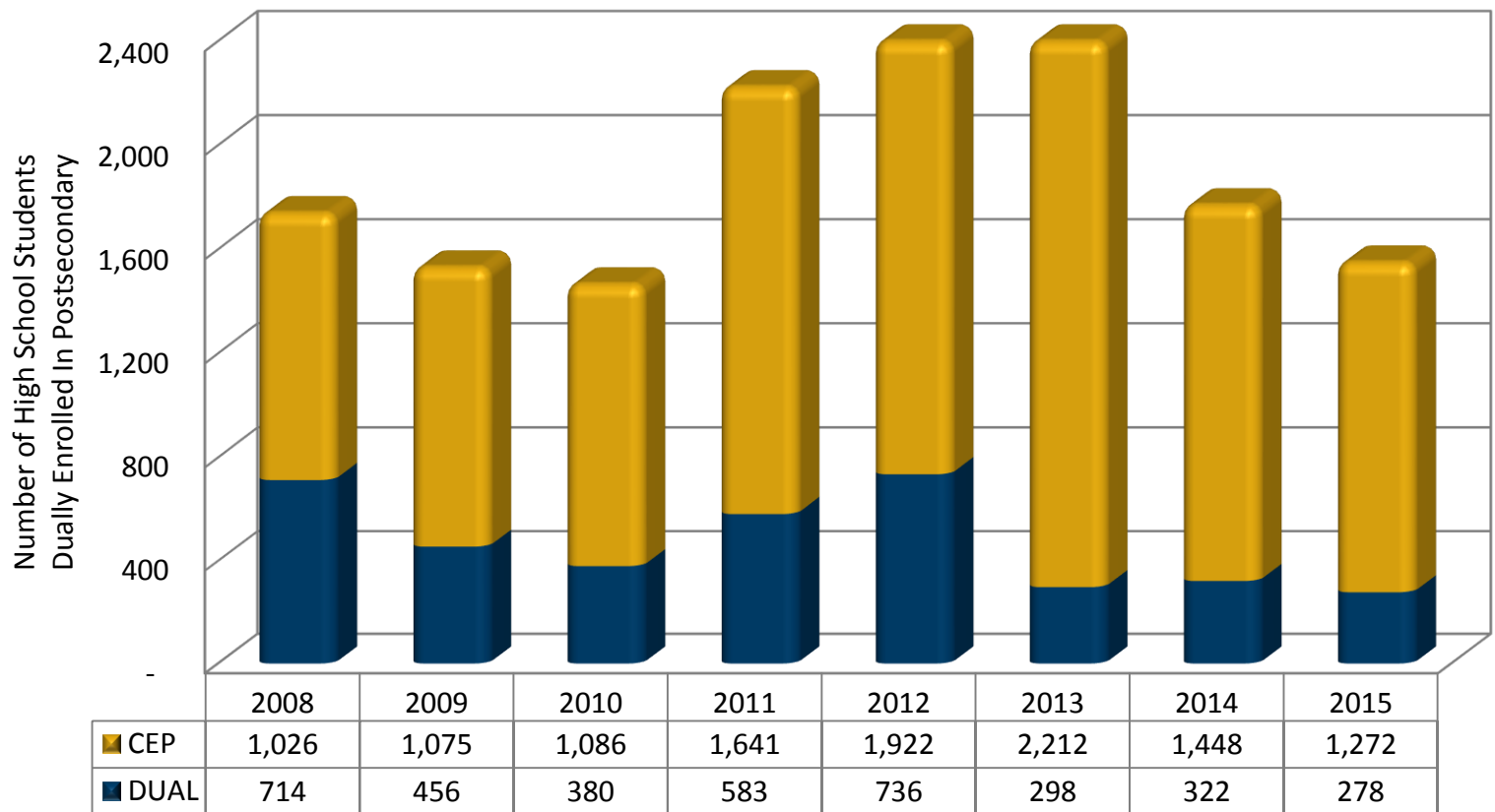


Source: P20 Data System and KHEDS Academic Year Collection, percent of total class failing developmental education courses.

# THE EXPANDING CAMPUS

# Dual Enrollment High School and Postsecondary

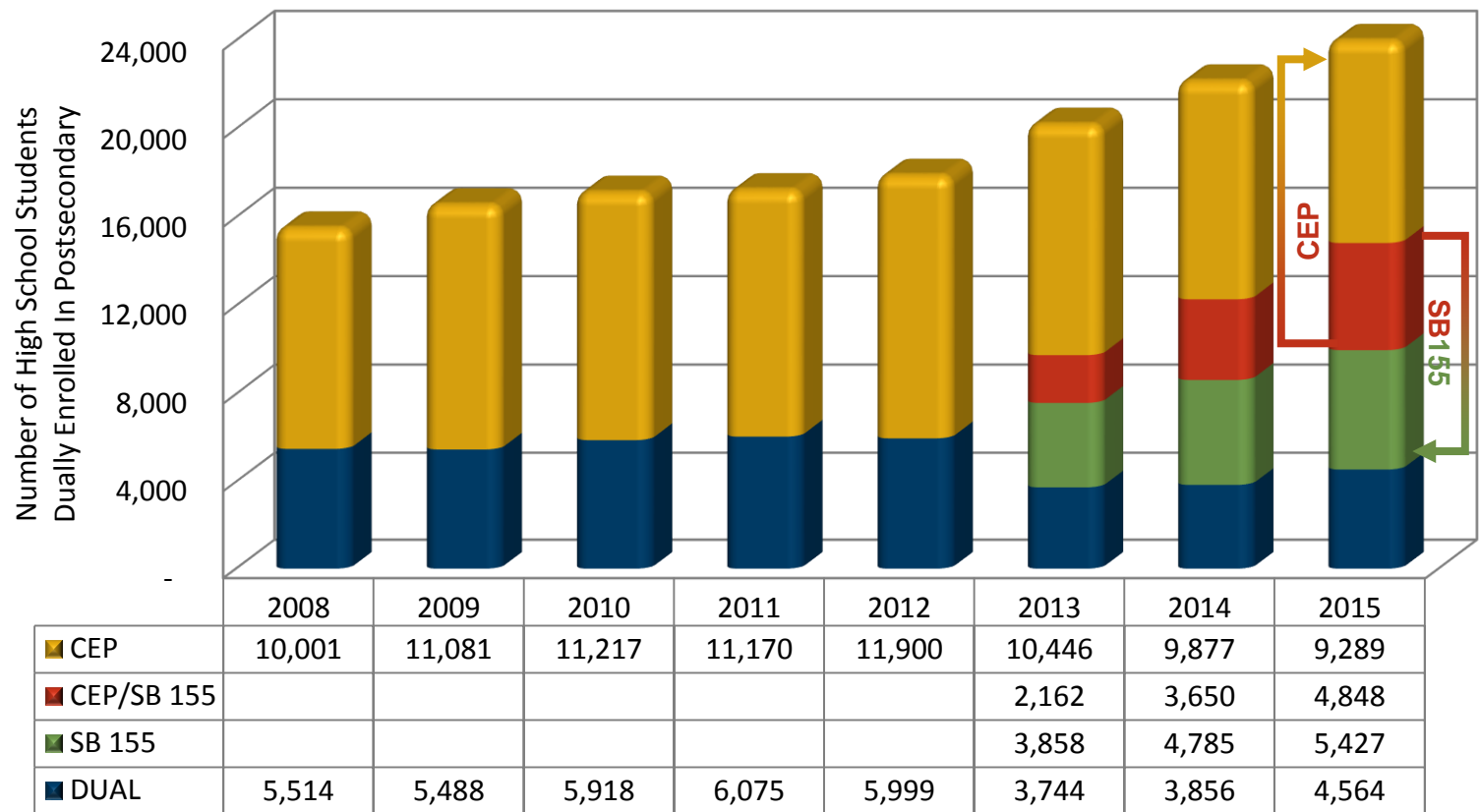
## Public Universities



Source: KHEDS Academic Year Collection

# Dual Enrollment High School and Postsecondary

## Community and Technical Colleges



Source: KHEDS Academic Year Collection

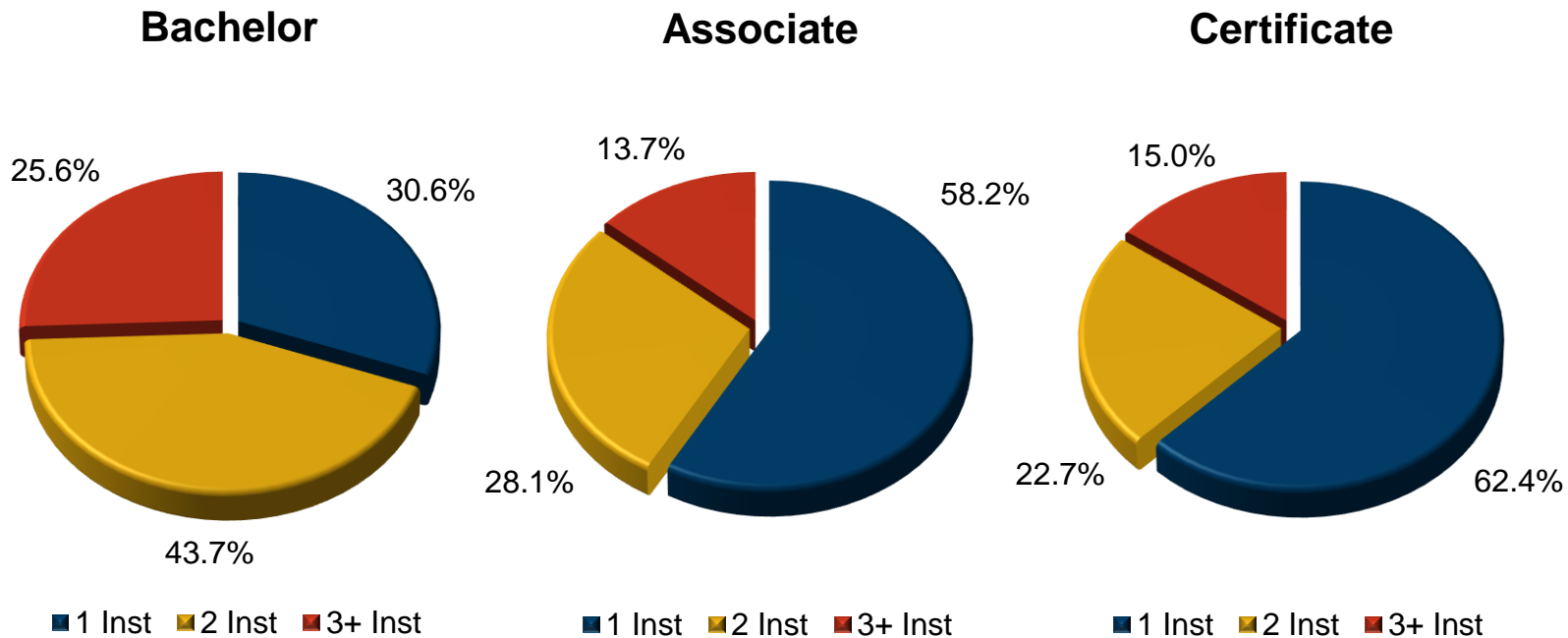
# Distance Education

Sector	Students Taking at Least 1 Distance Education Class		Students Taking at Least 1 Online Class	
	#	%	#	%
State Universities	53,638	49.1%	49,951	45.7%
Municipal University	3,519	44.8%	3,519	44.8%
Community Colleges	59,531	49.5%	58,256	48.5%
Technical Colleges	3,983	31.7%	3,983	31.7%
Systemwide Total	120,671	48.3%	115,709	46.3%

Source: KHEDS 2015 Academic Year Collection

# Undergraduate Awards

By Number of Kansas Public Institutions Attended



Source: KHEDS 2015 Academic Year Collection

# ACADEMIC YEAR ENROLLMENT BY INSTITUTION



# Enrollment Academic Year

State Research Universities									
Institution	Count Type	2010	2011	2012	2013	2014	2015	1 Year Change	5 Year Change
Kansas State University	Headcount	26,587	26,649	27,119	27,859	27,870	27,698	-0.6%	4.2%
	Full-Time Equivalency	20,240	20,540	20,920	21,588	21,669	21,740	0.3%	7.4%
University of Kansas	Headcount	29,493	28,887	28,050	27,121	26,923	26,931	0.0%	-8.7%
	Full-Time Equivalency	23,981	23,688	22,876	22,124	22,056	22,077	0.1%	-7.9%
University of Kansas Medical Center	Headcount	3,682	3,749	3,826	3,853	3,851	3,892	1.1%	5.7%
	Full-Time Equivalency	2,421	2,423	2,469	2,528	2,550	2,585	1.4%	6.8%
Wichita State University	Headcount	18,529	18,860	19,269	18,594	17,720	17,767	0.3%	-4.1%
	Full-Time Equivalency	11,139	11,827	12,112	12,038	11,924	12,006	0.7%	7.8%

Source: KHEDS Academic Year Collection

# Enrollment Academic Year

Regional and Municipal Universities									
Institution	Count Type	2010	2011	2012	2013	2014	2015	1 Year Change	5 Year Change
Emporia State University	Headcount	8,062	7,771	7,439	7,351	7,550	7,561	0.1%	-6.2%
	Full-Time Equivalency	5,339	5,134	4,767	4,688	4,830	4,947	2.4%	-7.3%
Fort Hays State University	Headcount	13,903	14,710	15,471	16,117	16,182	16,677	3.1%	20.0%
	Full-Time Equivalency	7,481	7,805	8,414	8,737	8,951	9,326	4.2%	24.7%
Pittsburg State University	Headcount	8,918	8,790	8,870	8,585	8,662	8,822	1.8%	-1.1%
	Full-Time Equivalency	7,003	7,017	7,060	6,843	6,915	6,924	0.1%	-1.1%
Washburn University	Headcount	8,178	8,593	8,671	8,406	8,084	7,848	-2.9%	-4.0%
	Full-Time Equivalency	5,368	5,641	5,699	5,589	5,321	5,125	-3.7%	-4.5%

Source: KHEDS Academic Year Collection

# Enrollment Academic Year

Community Colleges									
Institution	Count Type	2010	2011	2012	2013	2014	2015	1 Year Change	5 Year Change
Allen Community College	Headcount	5,191	4,886	4,959	4,972	4,535	4,208	-7.2%	-18.9%
	Full-Time Equivalency	2,257	2,153	2,055	2,054	1,892	1,790	-5.4%	-20.7%
Barton Community College	Headcount	13,519	13,302	14,810	15,807	15,951	16,275	2.0%	20.4%
	Full-Time Equivalency	3,368	3,544	3,869	4,079	4,257	4,291	0.8%	27.4%
Butler Community College	Headcount	14,307	14,804	14,811	14,551	13,495	13,315	-1.3%	-6.9%
	Full-Time Equivalency	6,518	6,833	6,840	6,676	6,201	6,053	-2.4%	-7.1%
Cloud County Community College	Headcount	4,985	4,460	4,601	4,484	3,764	3,569	-5.2%	-28.4%
	Full-Time Equivalency	1,668	1,707	1,710	1,612	1,463	1,397	-4.5%	-16.2%
Coffeyville Community College	Headcount	2,906	2,880	2,718	2,486	2,470	2,362	-4.4%	-18.7%
	Full-Time Equivalency	1,589	1,544	1,501	1,307	1,375	1,269	-7.7%	-20.1%
Colby Community College	Headcount	2,192	2,012	1,923	1,990	1,931	1,906	-1.3%	-13.0%
	Full-Time Equivalency	1,140	972	976	1,066	1,015	1,030	1.5%	-9.6%
Cowley Community College	Headcount	6,137	6,624	6,147	6,155	5,571	4,998	-10.3%	-18.6%
	Full-Time Equivalency	2,984	3,277	3,237	3,199	2,911	2,537	-12.8%	-15.0%

Source: KHEDS Academic Year Collection

# Enrollment Academic Year

Community Colleges									
Institution	Count Type	2010	2011	2012	2013	2014	2015	1 Year Change	5 Year Change
Dodge City Community College	Headcount	2,677	2,797	2,880	2,773	2,620	2,605	-0.6%	-2.7%
	Full-Time Equivalency	1,254	1,359	1,477	1,398	1,371	1,349	-1.6%	7.6%
Fort Scott Community College	Headcount	3,390	3,428	3,237	3,145	3,216	3,074	-4.4%	-9.3%
	Full-Time Equivalency	1,686	1,745	1,686	1,517	1,527	1,407	-7.9%	-16.5%
Garden City Community College	Headcount	3,263	3,165	2,874	3,171	2,958	3,038	2.7%	-6.9%
	Full-Time Equivalency	1,487	1,504	1,386	1,485	1,498	1,553	3.7%	4.4%
Highland Community College	Headcount	5,743	5,787	5,400	4,936	5,086	5,184	1.9%	-9.7%
	Full-Time Equivalency	2,301	2,347	2,150	1,968	2,078	2,093	0.7%	-9.0%
Hutchinson Community College	Headcount	9,571	9,572	9,410	9,924	9,622	9,275	-3.6%	-3.1%
	Full-Time Equivalency	3,891	4,062	4,114	4,174	3,961	3,887	-1.9%	-0.1%
Independence Community College	Headcount	1,946	1,802	1,825	1,730	1,530	1,292	-15.6%	-33.6%
	Full-Time Equivalency	907	917	941	853	777	719	-7.5%	-20.7%
Johnson County Community College	Headcount	32,742	32,939	31,581	30,938	29,670	29,837	0.6%	-8.9%
	Full-Time Equivalency	12,768	12,952	12,545	12,006	11,498	11,510	0.1%	-9.9%

Source: KHEDS Academic Year Collection

# Enrollment Academic Year

Community Colleges									
Institution	Count Type	2010	2011	2012	2013	2014	2015	1 Year Change	5 Year Change
Kansas City Kansas Community College	Headcount	11,173	11,015	11,047	10,805	9,779	9,212	-5.8%	-17.6%
	Full-Time Equivalency	4,775	4,946	4,848	4,721	4,309	4,019	-6.7%	-15.8%
Labette Community College	Headcount	2,732	2,708	2,536	2,521	2,394	2,332	-2.6%	-14.6%
	Full-Time Equivalency	1,220	1,209	1,182	1,174	1,078	1,027	-4.7%	-15.8%
Neosho County Community College	Headcount	3,553	3,721	3,931	4,176	3,812	3,100	-18.7%	-12.7%
	Full-Time Equivalency	1,365	1,511	1,662	1,668	1,579	1,392	-11.8%	2.0%
Pratt Community College	Headcount	2,434	2,719	2,417	2,325	2,285	1,994	-12.7%	-18.1%
	Full-Time Equivalency	1,098	1,160	1,162	1,130	1,109	1,039	-6.3%	-5.4%
Seward County Community College/Area Technical School	Headcount	2,698	2,582	2,670	2,734	2,632	2,638	0.2%	-2.2%
	Full-Time Equivalency	1,186	1,224	1,280	1,326	1,267	1,294	2.1%	9.1%

Source: KHEDS Academic Year Collection

# Enrollment Academic Year

Technical Colleges									
Institution	Count Type	2010	2011	2012	2013	2014	2015	1 Year Change	5 Year Change
Flint Hills Technical College	Headcount	955	1,054	1,043	1,062	1,099	1,150	4.6%	20.4%
	Full-Time Equivalency	513	575	603	602	651	601	-7.7%	17.2%
Manhattan Area Technical College	Headcount	959	1,040	1,123	1,210	1,164	1,171	0.6%	22.1%
	Full-Time Equivalency	491	547	606	632	660	615	-6.8%	25.3%
North Central Kansas Technical College	Headcount	1,813	1,104	1,180	1,177	1,150	1,207	5.0%	-33.4%
	Full-Time Equivalency	734	700	700	672	676	649	-4.0%	-11.6%
Northwest Kansas Technical College	Headcount	412	445	610	714	762	863	13.3%	109.5%
	Full-Time Equivalency	385	443	509	541	565	529	-6.4%	37.4%
Salina Area Technical College	Headcount	689	1,085	1,205	1,033	916	897	-2.1%	30.2%
	Full-Time Equivalency	412	393	440	412	403	351	-12.9%	-14.8%
Washburn Institute of Technology	Headcount	1,101	1,213	1,348	1,551	1,882	1,884	0.1%	71.1%
	Full-Time Equivalency	646	732	835	885	1,072	1,106	3.2%	71.2%
Wichita Area Technical College	Headcount	3,866	3,682	3,969	4,693	5,285	5,394	2.1%	39.5%
	Full-Time Equivalency	1831	1,841	1,985	2,220	2,243	2,192	-2.3%	19.7%

Source: KHEDS Academic Year Collection